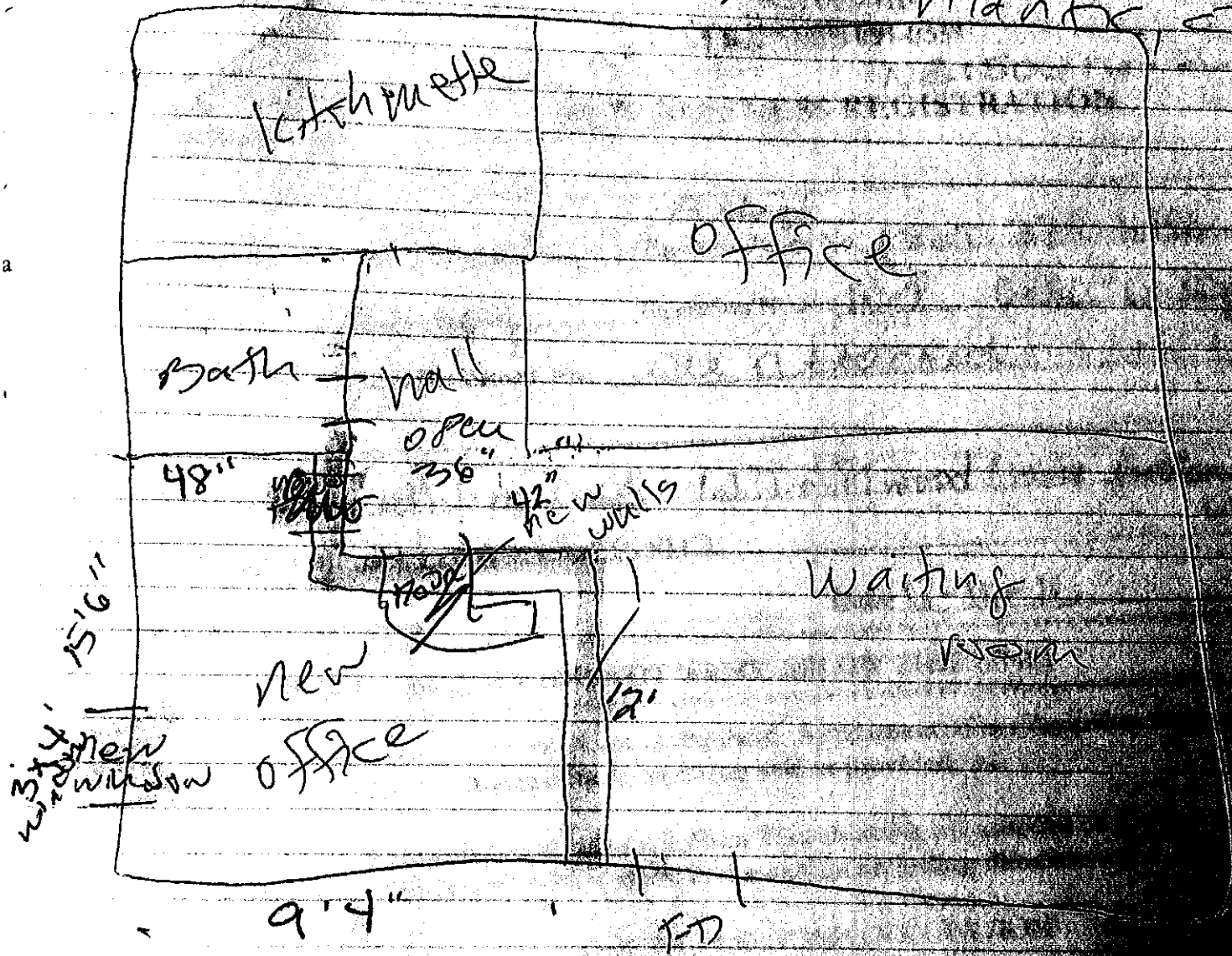
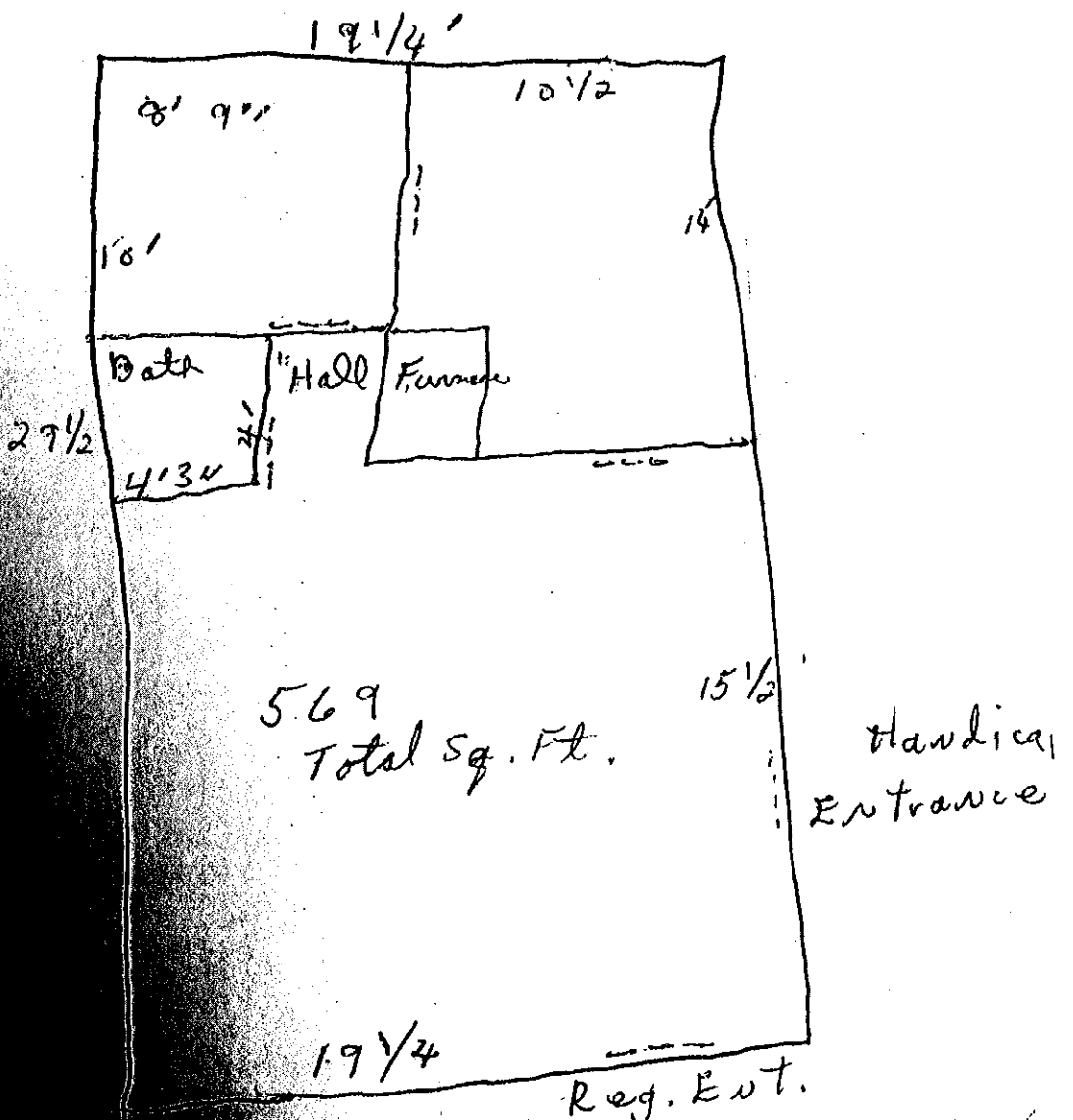


Building

436 main st  
Niantic CT



4 x 4  
 Rear Rm 14' x 10' 6"  
 " " ~~8' 6"~~ 10' x 8' 1/2'  
 Kitchen + Front Rm. 15' 1/2' x 19' 1/4'  
 Support Wall - at 15' 1/2' pt  
 Total Sq. Ft. 29' 1/2' x 19' 1/4' inside  
 Hall outside Bath is 3 x 4



7' 9" - sidewalk on corner - 120'  
 (width) - 64' on High doesn't make  
 back of lot