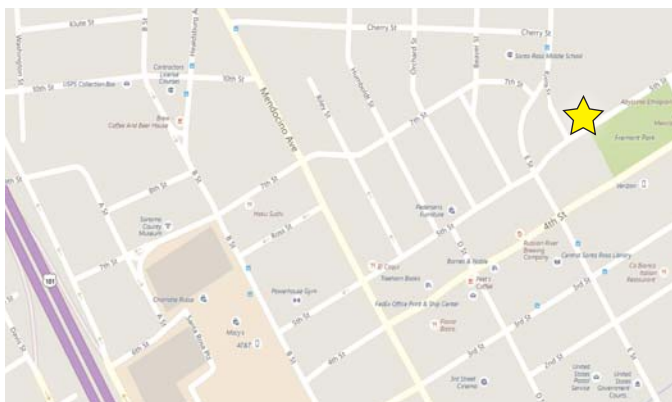


Office Space For Lease

837 5th Street #2, Santa Rosa, CA



Vicinity Map

FEATURES

- ±1,500 sf 2nd Floor Office Space
- Convenient Downtown Location
- Onsite Parking
- Expansive window line with operable windows
- Three Private Offices
- High Ceilings with Crown Molding
- Kitchen/Break Room

LEASE RATE

\$1.50 psf Gross



**KEEGAN & COPPIN
COMPANY, INC.**

ONCOR INTERNATIONAL

Sara Wann, SREA

1201 North McDowell Blvd, Petaluma, CA
(707) 664-1400 • Fax: (707) 792-7336

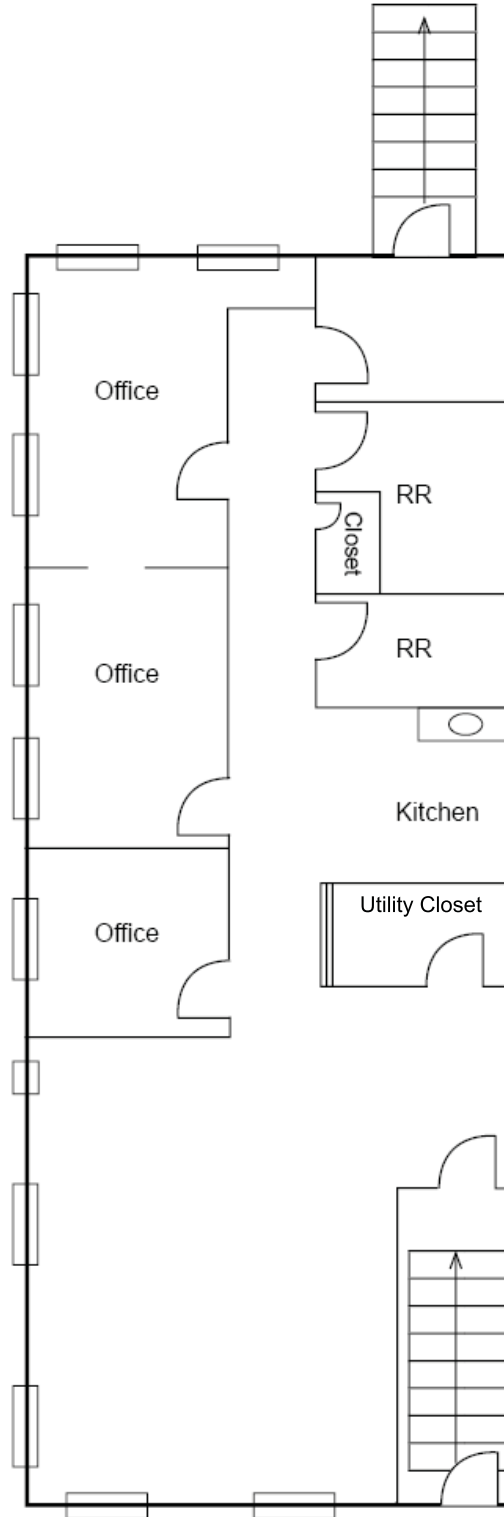
Lic #01437146:

SWann@keegancoppin.com

The above information, while not guaranteed, has been secured from sources we believe to be reliable. Submitted subject to error, change or withdrawal.
An interested party should verify the status of the property and the information herein.

Office Space For Lease

837 5th Street #2, Santa Rosa, CA



*Floorplan not drawn by architect and not to scale.



KEEGAN & COPPIN
COMPANY, INC.
ONCOR INTERNATIONAL

Sara Wann, SREA

1201 North McDowell Blvd, Petaluma, CA
(707) 664-1400 • Fax: (707) 792-7336

Lic #01437146:

SWann@keegancoppin.com

The above information, while not guaranteed, has been secured from sources we believe to be reliable. Submitted subject to error, change or withdrawal.
An interested party should verify the status of the property and the information herein.

Office Space For Lease

837 5th Street #2, Santa Rosa, CA



**KEEGAN & COPPIN
COMPANY, INC.**

ONCOR INTERNATIONAL

Sara Wann, SREA

1201 North McDowell Blvd, Petaluma, CA
(707) 664-1400 • Fax: (707) 792-7336

Lic #01437146:

SWann@keegancoppin.com

The above information, while not guaranteed, has been secured from sources we believe to be reliable. Submitted subject to error, change or withdrawal.
An interested party should verify the status of the property and the information herein.

Office Space For Lease

837 5th Street #2, Santa Rosa, CA

USER SPACE

Office, Medical, & Personal Services

ZONING

Office Commercial

RENTABLE SPACE

1,500 ± sf

PARKING

On Site

LEASE RATE

\$1.50 psf Gross

UTILITIES

Pro-Rata Share

DESCRIPTION OF PREMISES - FEATURES

Office is currently configured with 3 private offices, kitchen/break room, large open area/bull pen, expansive window line with operable windows along two sides of the building, 2 restrooms and storage room.

Unique touches like high ceilings and crown molding create an inviting warm atmosphere.

Suite is located on the 2nd floor.

DESCRIPTION OF LOCATION - AREA

Great downtown location in Santa Rosa, easily accessible from Hwy 101, with onsite parking, street parking and parking garage nearby.



**KEEGAN & COPPIN
COMPANY, INC.**

ONCOR INTERNATIONAL

Sara Wann, SREA

1201 North McDowell Blvd, Petaluma, CA
(707) 664-1400 • Fax: (707) 792-7336

Lic #01437146:

SWann@keegancoppin.com

The above information, while not guaranteed, has been secured from sources we believe to be reliable. Submitted subject to error, change or withdrawal.
An interested party should verify the status of the property and the information herein.

