



PAD SITE FOR LEASE

Groff Property
Reisterstown Road & Groff Lane,
Owings Mills, MD 21117



OVERVIEW

Two pad site opportunities adjacent to a Wawa at the signalized intersection of Reisterstown Road and relocated Groff Lane. Ideal for all types of restaurant, retail or service uses. Groff Lane connects Reisterstown Road with Owings Mills Boulevard and the Stevenson University campus.

FEATURING

SIZE	Pad #1: 1 acres Pad #2: 0.75 acres ±2 historic area for development
AVAILABILITY	Immediate
RENTAL RATE	TBD
TRAFFIC COUNT	33,822 AADT (Reisterstown Road)
ZONING	BL-AS

DEMOGRAPHICS AT A GLANCE

2016 DEMOGRAPHICS	1 MILE	3 MILES	5 MILES
Population	10,701	77,786	154,782
No. Households	3,861	30,798	60,530
Average HH Income	\$68,243	\$94,771	\$97,456
Daytime Population	9,413	33,319	65,065

All information herein was obtained from sources deemed reliable. This information is subject to change. No warranty is made as to its accuracy.



FOR MORE INFORMATION, CONTACT:

Andy Segall
 asegall@segallgroup.com
 410.960.0361 **CELL**
 410.753.3000 **OFFICE**

SEGALL GROUP COMMERCIAL REAL ESTATE

410.753.3000 **OFFICE**
 605 South Eden Street
 Suite 200
 Baltimore, MD 21231

202.833.3830 **OFFICE**
 1600 Wilson Boulevard
 Suite 930
 Arlington, VA 22209

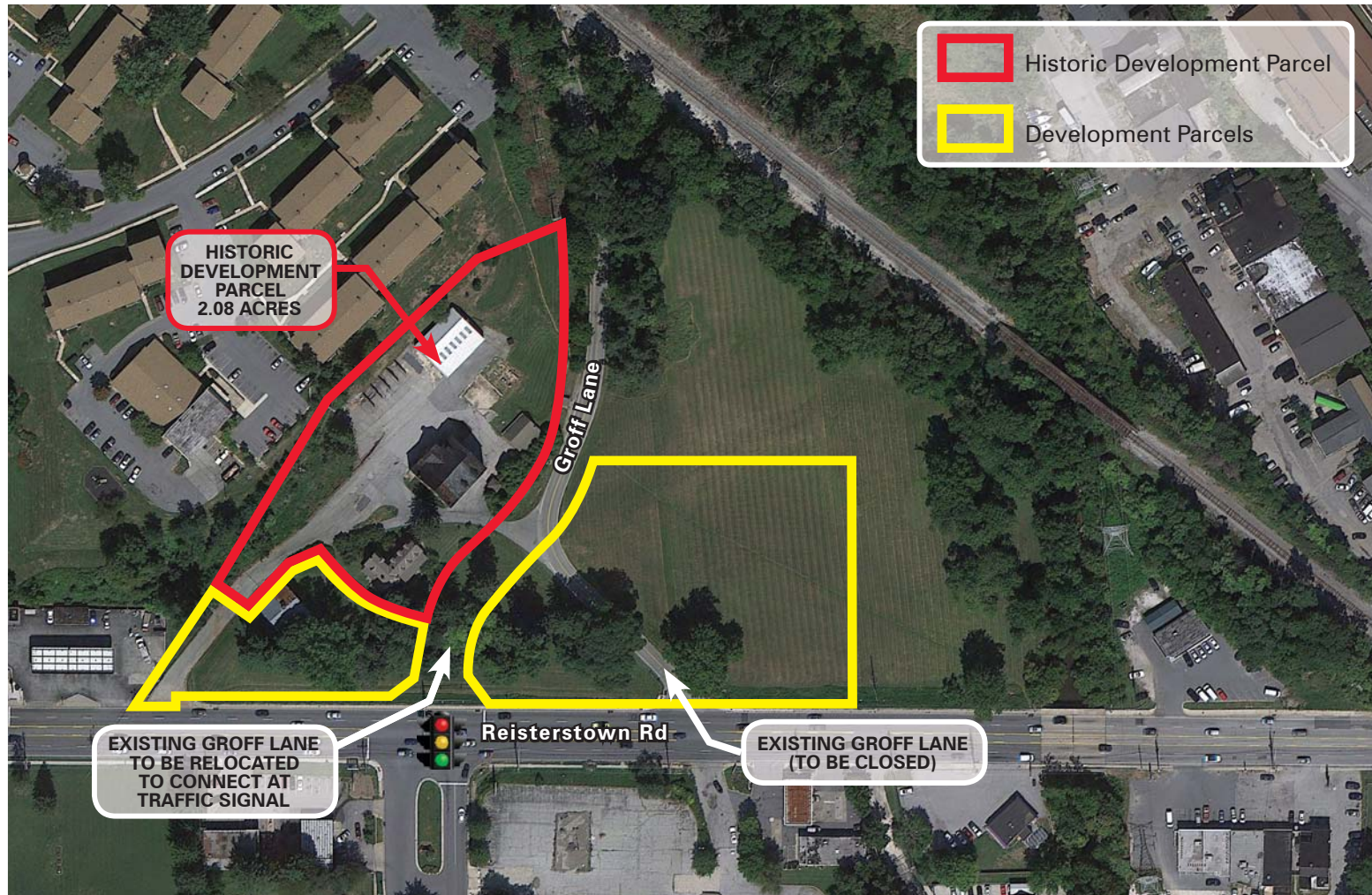
segallgroup.com • RETAIL ORIENTEDSM

Members of the International Council of Shopping Centers and Realty Resources.

DEVELOPMENT AREAS

Groff Property • Owings Mills, MD 21117

PAD SITE FOR LEASE



FOR MORE INFORMATION, CONTACT:

Andy Segall
asegall@segallgroup.com
410.960.0361 **CELL**
410.753.3000 **OFFICE**

SEGALL GROUP COMMERCIAL REAL ESTATE

410.753.3000 **OFFICE**
605 South Eden Street
Suite 200
Baltimore, MD 21231

202.833.3830 **OFFICE**
1600 Wilson Boulevard
Suite 930
Arlington, VA 22209

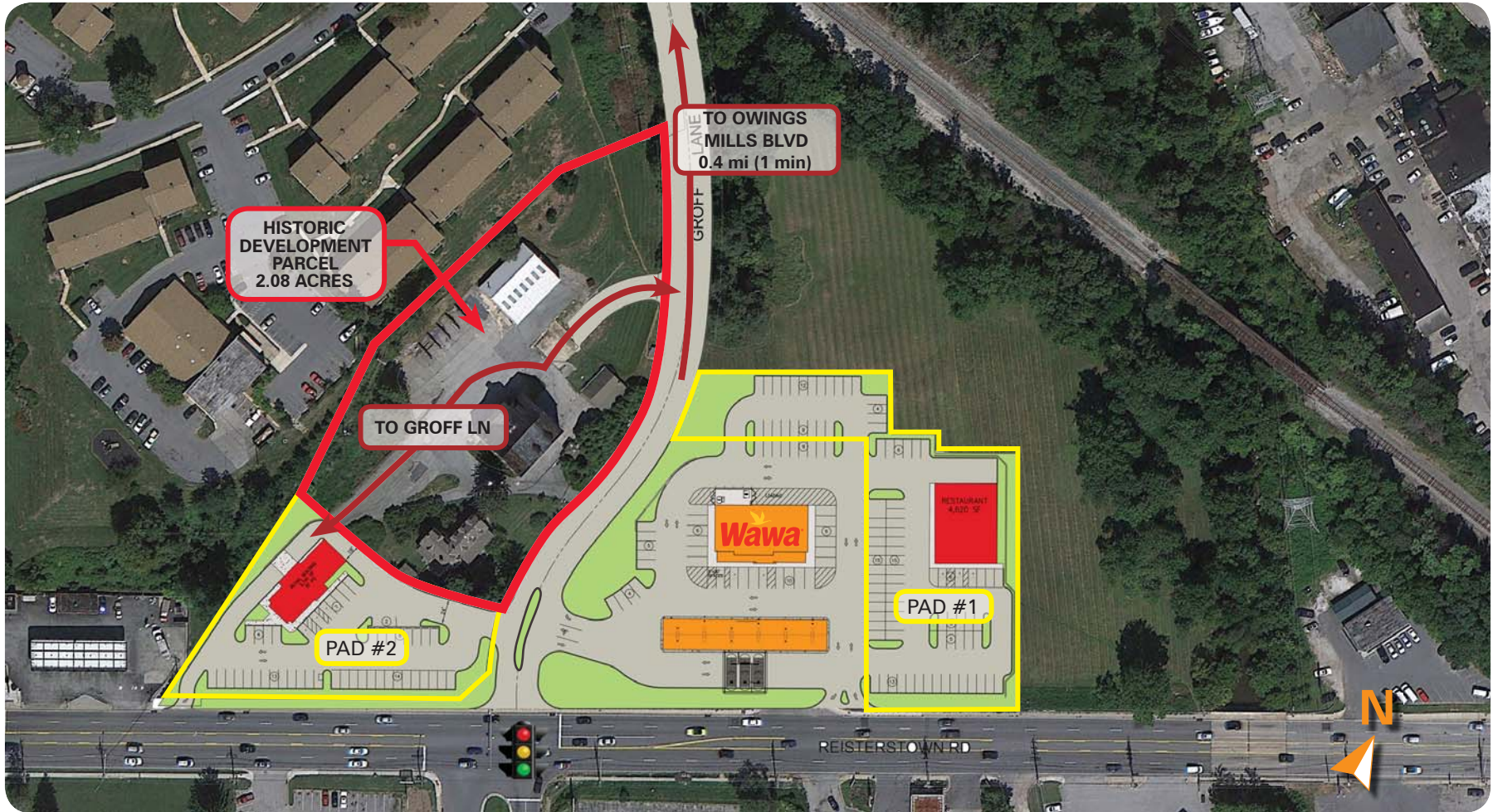
segallgroup.com • RETAIL ORIENTEDSM

Members of the International Council of Shopping Centers and Realty Resources.

SITE PLAN

Groff Property • Owings Mills, MD 21117

PAD SITE FOR LEASE



FOR MORE INFORMATION, CONTACT:

Andy Segall
asegall@segallgroup.com
410.960.0361 **CELL**
410.753.3000 **OFFICE**

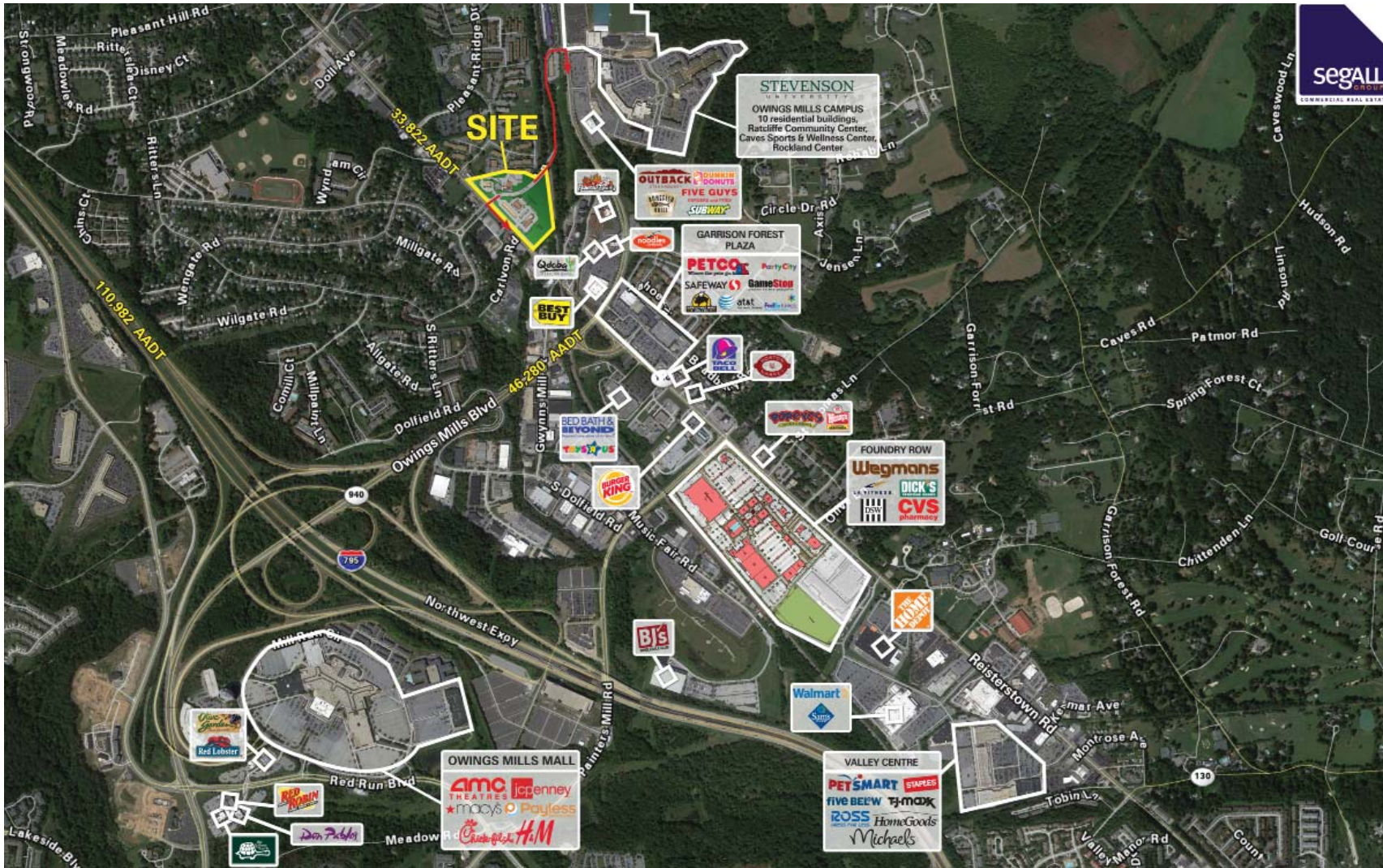
SEGALL GROUP COMMERCIAL REAL ESTATE

410.753.3000 **OFFICE**
605 South Eden Street
Suite 200
Baltimore, MD 21231

202.833.3830 **OFFICE**
1600 Wilson Boulevard
Suite 930
Arlington, VA 22209

segallgroup.com • RETAIL ORIENTEDSM

Members of the International Council of Shopping Centers and Realty Resources.



FOR MORE INFORMATION, CONTACT:

Andy Segall
 asegall@segallgroup.com
 410.960.0361 **CELL**
 410.753.3000 **OFFICE**

SEGALL GROUP COMMERCIAL REAL ESTATE

410.753.3000 OFFICE	202.833.3830 OFFICE
605 South Eden Street Suite 200 Baltimore, MD 21231	1600 Wilson Boulevard Suite 930 Arlington, VA 22209

segallgroup.com • RETAIL ORIENTEDSM

Members of the International Council of Shopping Centers and Realty Resources.