



# TURN-KEY AUTOMOTIVE SERVICE FACILITY

828 S SALISBURY BOULEVARD  
SALISBURY, MD 21801

---

**Bradley Gillis, CCIM**  
Senior Advisor  
410.543.5115  
bradley.gillis@svn.com

**Joey Gilkerson**  
Advisor  
410.543.5115  
joey.gilkerson@svn.com

**Chris Gilkerson**  
Advisor  
410.543.2440  
chris.gilkerson@svn.com

# Property Summary



## OFFERING SUMMARY

Available SF:	1,827 SF
Lease Rate:	\$5,000 per month [NNN]
Lot Size:	0.54 Acres
Year Built:	1969
Building Size:	1,827 SF
Zoning:	Commercial
Market:	Eastern Shore of Maryland
Submarket:	Salisbury

## PROPERTY OVERVIEW

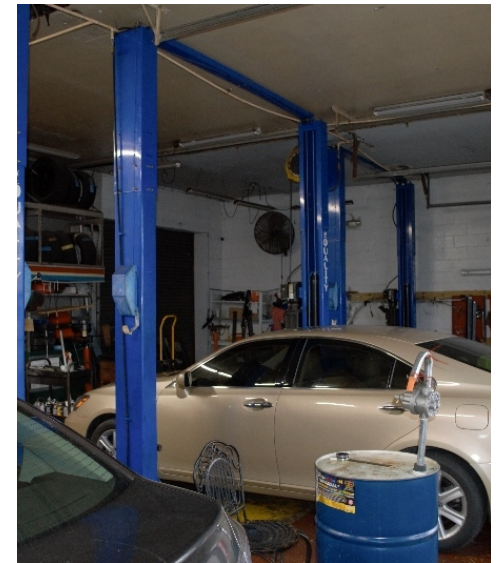
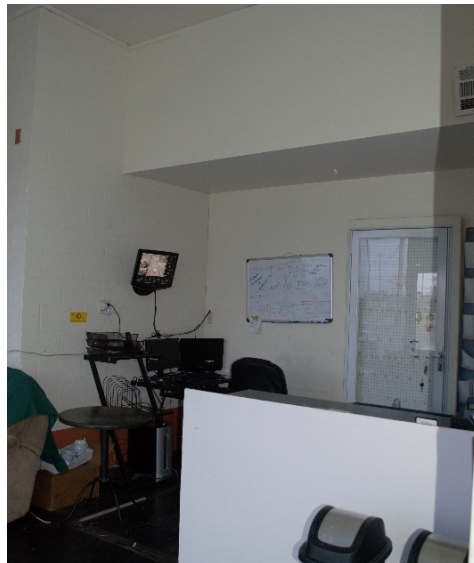
Location, Location, Location! Existing Automotive Facility with 3 bays. Comes with 3 lifts, and all equipment to make this a turn-key operation. Heavy traffic counts, located on a signalized intersection on US Rt 13.

## PROPERTY HIGHLIGHTS

- Automotive Service Facility
- Turn-Key/Equipment Included
- Signalized Corner
- High Traffic Volume & Visibility



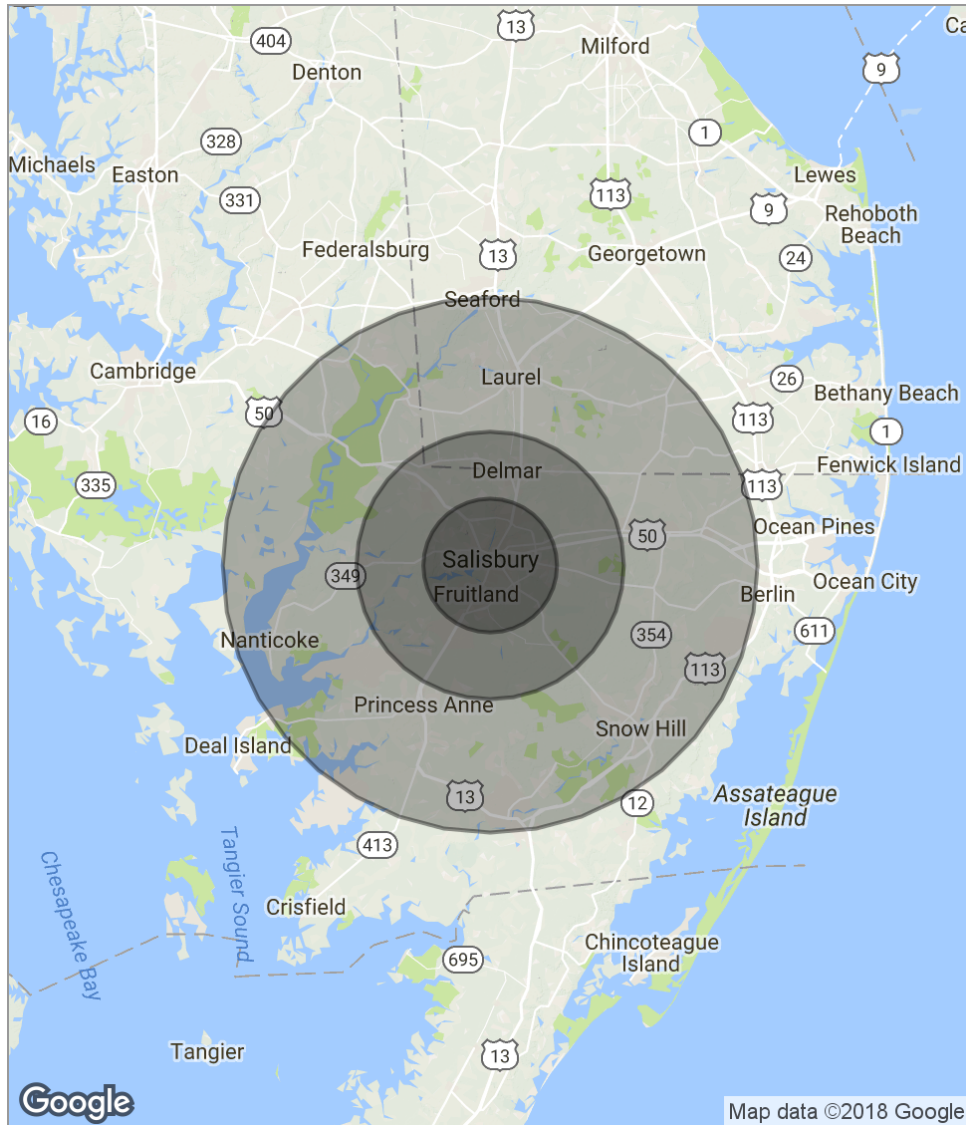
# Additional Photos



# Location Maps



# Demographics Map



<b>POPULATION</b>	<b>5 MILES</b>	<b>10 MILES</b>	<b>20 MILES</b>
Total population	77,327	110,536	188,750
Median age	33.3	34.4	36.2
Median age (male)	31.9	32.9	34.9
Median age (Female)	34.2	35.4	37.3
<b>HOUSEHOLDS &amp; INCOME</b>	<b>5 MILES</b>	<b>10 MILES</b>	<b>20 MILES</b>
Total households	28,850	40,789	68,374
# of persons per HH	2.7	2.7	2.8
Average HH income	\$62,748	\$63,971	\$63,357
Average house value	\$211,474	\$214,371	\$221,852

*\* Demographic data derived from 2010 US Census*