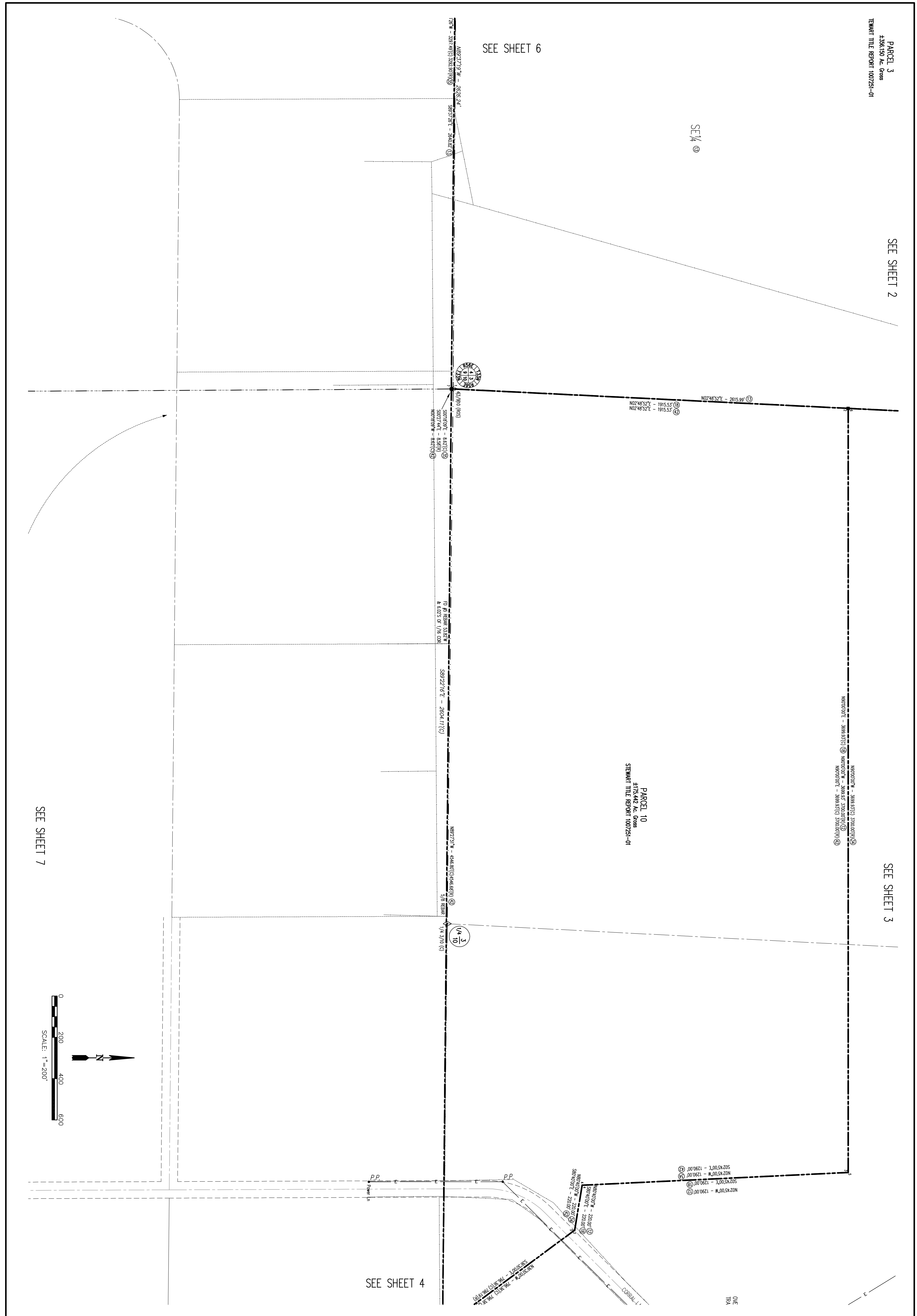


SEE SHEET 2

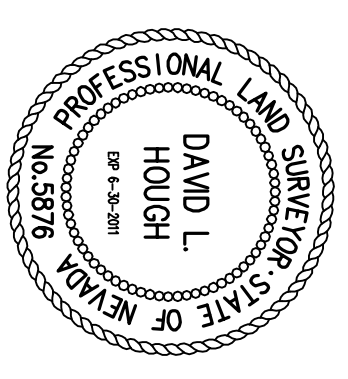
SEE SHEET 3

SEE SHEET 6



SEE SHEET 7

SEE SHEET 4



REVISED ALTA SURVEY  
OF PORTIONS OF SECTIONS 2-4, 9-11, 14-15 & 22-23  
TOWNSHIP 33 NORTH, RANGE 56 EAST - ELKO COUNTY, NEVADA  
FOR  
RUBY VIEW ESTATES, LLC  
540 WEST PLUMB LANE SUITE 1A  
RENO, NEVADA 89509

CHILTON Engineering and Surveying, LTD  
(775) 738-2121 421 Court Street Elko, Nevada 89801

Revised	By	Date	Description
1	dh	14 Apr 10	Revised to accomodate additional documents as shown in References block.

Scale	1" = 200'
Job No.	7185.001
Designed	dh
Drawn	dh
Approved	
Date	04 OCT 2006
Dwg. No.	06044
Sheet	5 OF 12