



**COLDWELL
BANKER
COMMERCIAL**
ADVISORS

EVANSTON INDUSTRIAL FOR SALE



380 JAMISON DRIVE EVANSTON, WY

INDUSTRIAL BUILDING SALE

PROPERTY INFORMATION

- Highly visible industrial office and shop
- Shop space: 9,600 SF
- Office: 1,440 SF
- Total size: 11,040 SF
- 600 SF storage building
- Acreage: 4.6
- Power: 3 Phase
- 8 Ground level doors
- Excellent I-80 access
- Steel frame construction with metal siding
- Built in 2008
- Truck wash
- Security system
- Fully fenced property
- Asking price: \$600,000

 **John Bushnell**

801.947.8332

john.bushnell@cbcadvisors.com

 **Lise Freeman**

801.300.3228

lfreemanrealestate@gmail.com

www.cbcadvisors.com



INDUSTRIAL

CBC ADVISORS

6550 S MILLROCK DR, STE 200

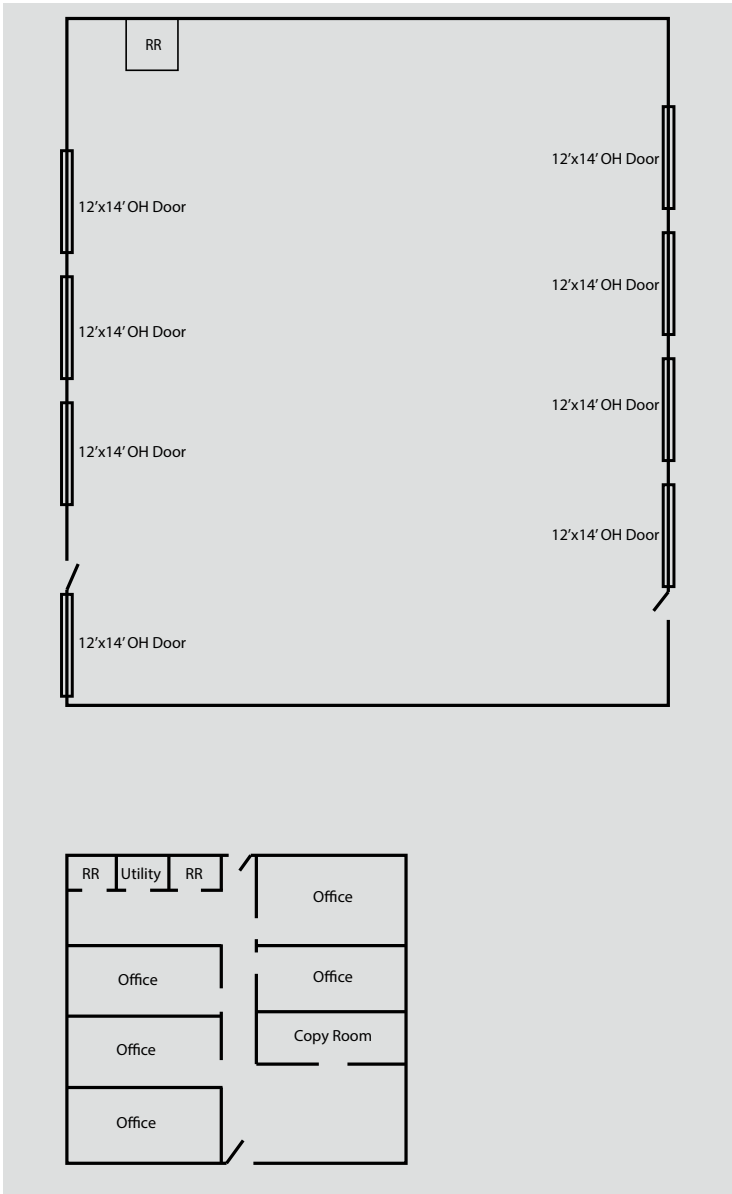
SALT LAKE CITY, UTAH 84121

(P) 801.947.8300

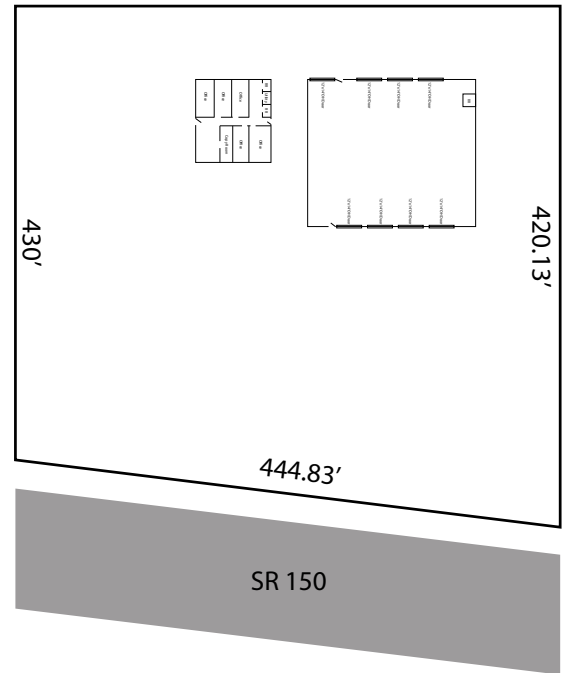


PROPERTY PLANS

Floor Plans



Site Plan Measurements



John Bushnell
801.947.8332
john.bushnell@cbcadvisors.com

Lise Freeman
801.300.3228
lfreemanrealestate@gmail.com

www.cbcadvisors.com



CBC ADVISORS
6550 S MILLROCK DR, STE 200
SALT LAKE CITY, UTAH 84121
(P) 801.947.8300



EVANSTON INDUSTRIAL FOR SALE



John Bushnell
801.947.8332
john.bushnell@cbcadvisors.com

Lise Freeman
801.300.3228
lfreemanrealestate@gmail.com

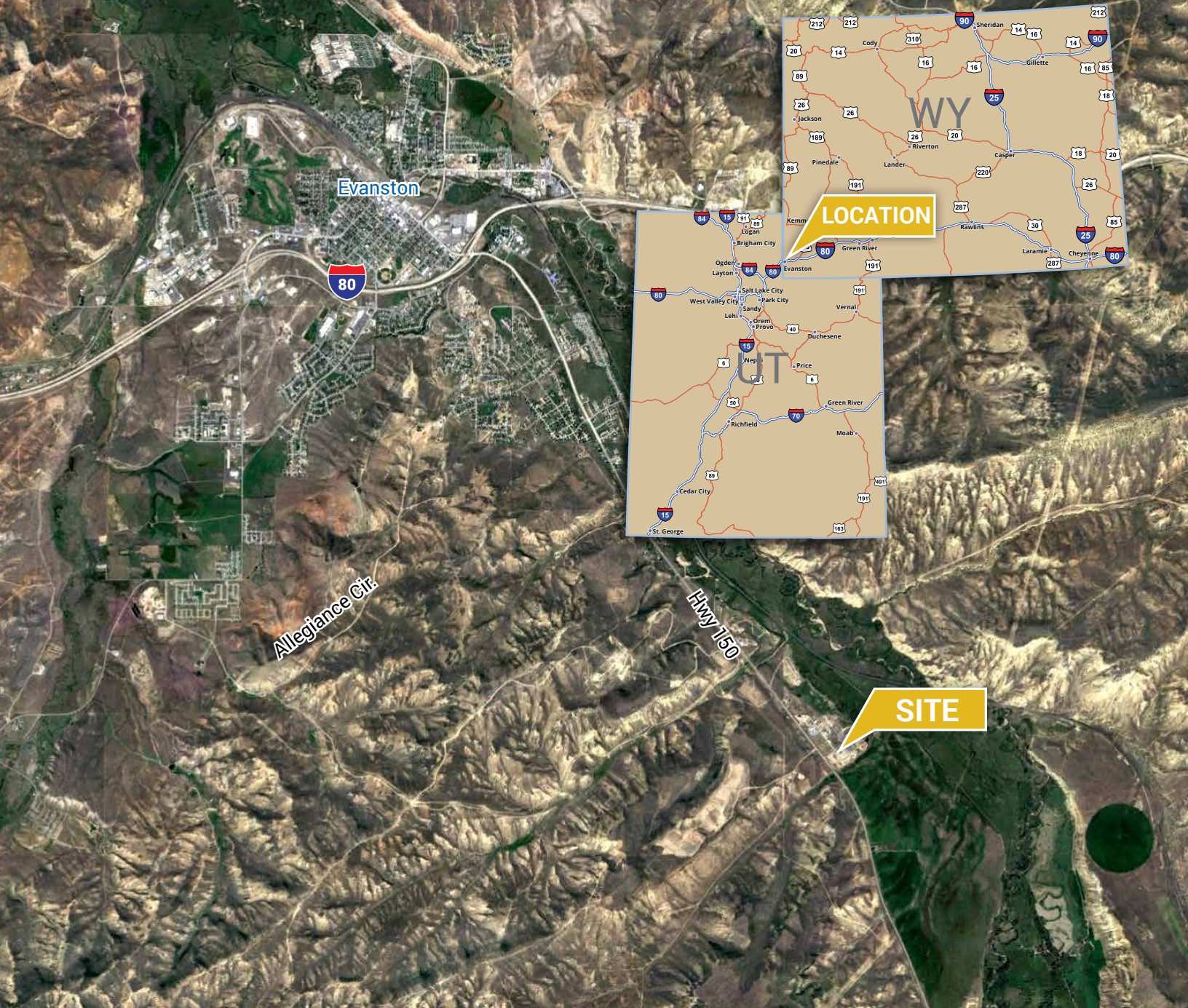
www.cbcadvisors.com



CBC ADVISORS
6550 S MILLROCK DR, STE 200
SALT LAKE CITY, UTAH 84121
(P) 801.947.8300



EVANSTON INDUSTRIAL FOR SALE



John Bushnell
801.947.8332
john.bushnell@cbcadvisors.com

Lise Freeman
801.300.3228
lfreemanrealestate@gmail.com

www.cbcadvisors.com



CBC ADVISORS
6550 S MILLROCK DR, STE 200
SALT LAKE CITY, UTAH 84121
(P) 801.947.8300