



1900 ENCHANTED WAY

1900 Enchanted Way, Grapevine, TX 76051

AVAILABLE FOR LEASE



Property Highlights

- Conveniently located off of 121 and 635
- 10 foot ceilings
- Great space condition with existing build out
- High window line
- Expansive surface parking

JOHN FANCHER

+1 972 663 9690

john.fancher@cushwake.com

2021 McKinney Ave., Suite 900 Dallas, Texas • Main +1 972 663 9600 • Fax +1 972 663 9999

cushmanwakefield.com

Cushman & Wakefield Copyright 2020. No warranty or representation, express or implied, is made to the accuracy or completeness of the information contained herein, and same is submitted subject to errors, omissions, change of price, rental or other conditions, withdrawal without notice, and to any special listing conditions imposed by the property owner(s). As applicable, we make no representation as to the condition of the property (or properties) in question.

1900 ENCHANTED WAY

1900 Enchanted Way, Grapevine, TX 76051

AVAILABLE FOR LEASE



12 MIN
TO DFW AIRPORT

24 MIN
TO LOVE FIELD
AIRPORT

25 MIN
TO DOWNTOWN
DALLAS

28 MIN
TO DOWNTOWN
FT. WORTH

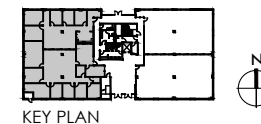
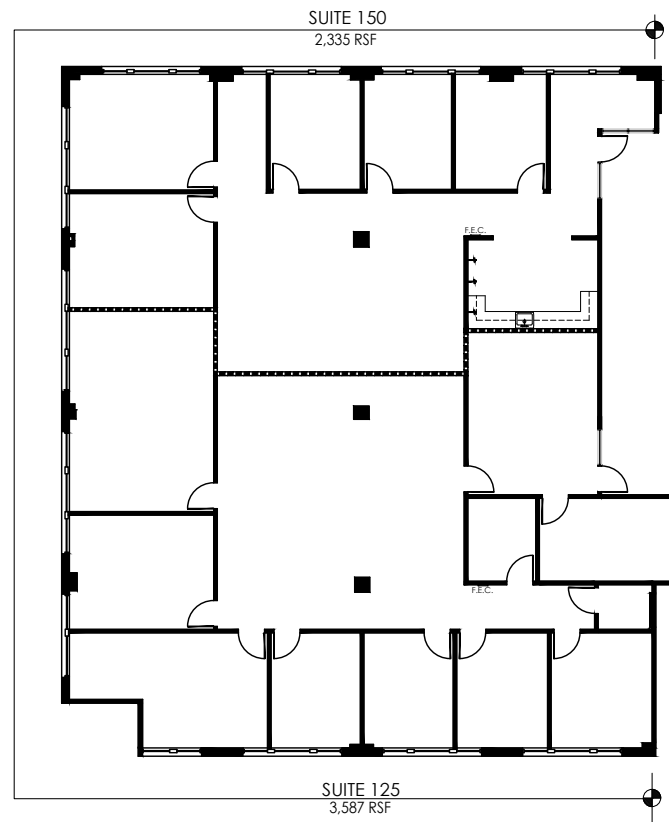
JOHN FANCHER
+1 972 663 9690
john.fancher@cushwake.com

2021 McKinney Ave., Suite 900 Dallas, Texas • Main +1 972 663 9600 • Fax +1 972 663 9999
cushmanwakefield.com

1900 ENCHANTED WAY

1900 Enchanted Way, Grapevine, TX 76051

SUITE 125 & 150 - 2,335 - 5,922 RSF



JOHN FANCHER

+1 972 663 9690

john.fancher@cushwake.com

2021 McKinney Ave., Suite 900 Dallas, TX 75201

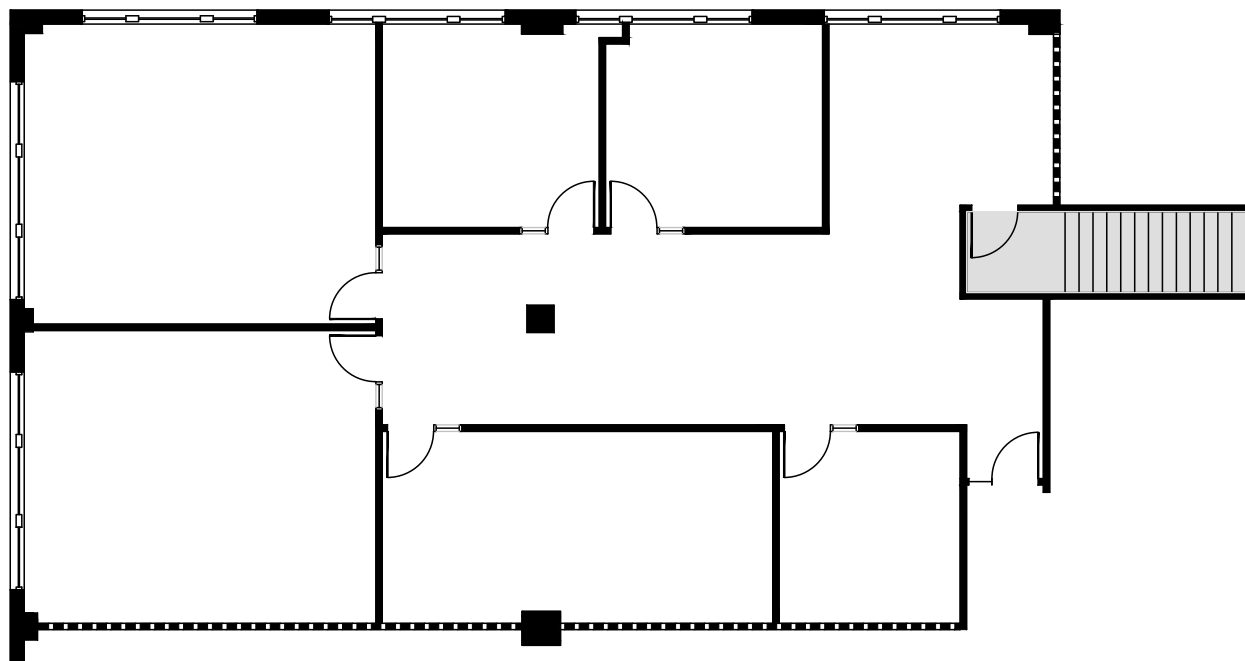
Main +1 972 663 9600 | Fax +1 972 663 9999

cushmanwakefield.com

1900 ENCHANTED WAY

1900 Enchanted Way, Grapevine, TX 76051

SUITE 250 - 3,014 RSF



KEY PLAN



JOHN FANCHER

+1 972 663 9690

john.fancher@cushwake.com

2021 McKinney Ave., Suite 900 Dallas, TX 75201

Main +1 972 663 9600 | Fax +1 972 663 9999

cushmanwakefield.com