

BRAND NEW, HIGH-END 6,315 RSF SUBLEASE OPPORTUNITY



ONE LETTERMAN

BUILDING A | SAN FRANCISCO, CA

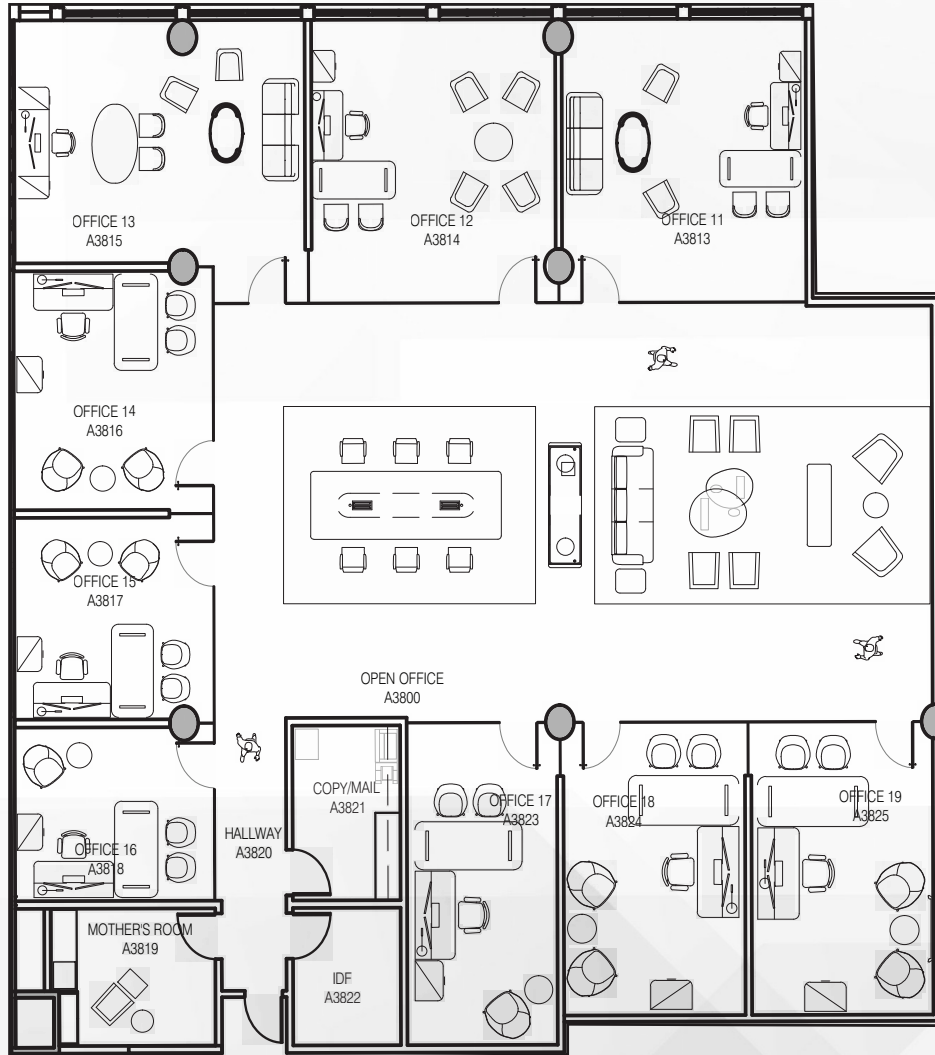
SUBLEASE TERM THROUGH AUGUST 2030

NEWMARK

 **LUMINATE**

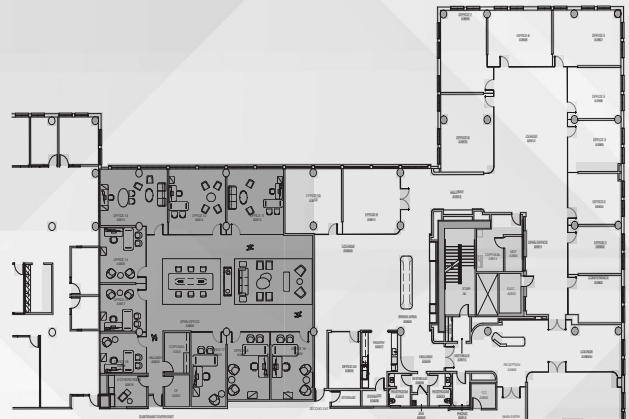
Jennifer Essner Senior Managing Director
415-407-4286 | Jennifer.Essner@nmrk.com
CA RE Lic. #01442525

BUILDING A | 6,315 RSF



HIGHLIGHTS

- Letterman Center Prestige
- Private equity firm looking to sublease $\pm 6,315$ RSF of extremely high-end finishes (demising needed)
- Fully furnished space
- Spectacular improvements consisting of 9 private offices using floor-to-ceiling glass plus open area
- Incredible natural light and views of park setting
- Promenade level
- Campus amenities include fitness center, dining commons and onsite daycare



Jennifer Essner Senior Managing Director
415-407-4286 | Jennifer.Essner@nmrk.com
CA RE Lic. #01442525

NEWMARK

 **LUMINATE**

INTERIOR GALLERY



ONE LETTERMAN BUILDING A | SAN FRANCISCO, CA

The information contained herein has been obtained from sources deemed reliable but has not been verified and no guarantee, warranty or representation, either express or implied, is made with respect to such information. Terms of sale or lease and availability are subject to change or withdrawal without notice.

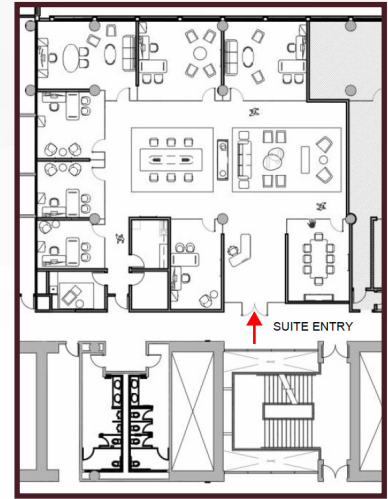
NEWMARK

 **LUMINATE**

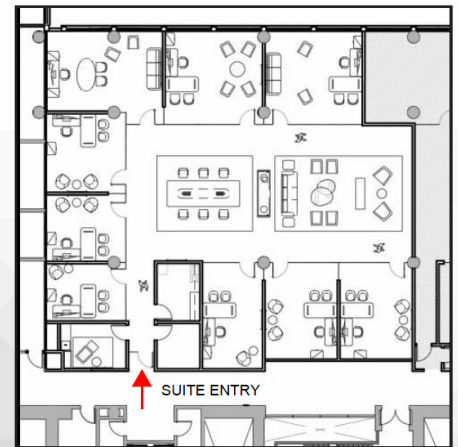
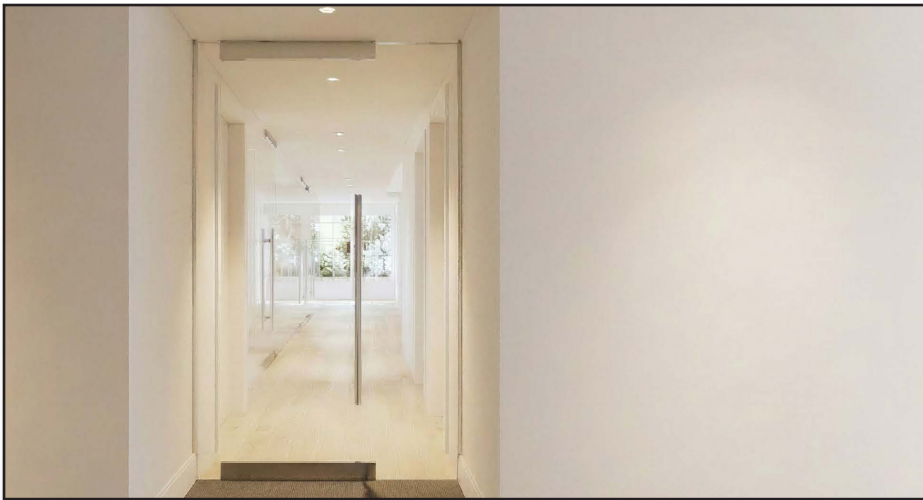
Jennifer Essner Senior Managing Director
415-407-4286 | Jennifer.Essner@nmrk.com
CA RE Lic. #01442525

INTERIOR RENDERINGS*

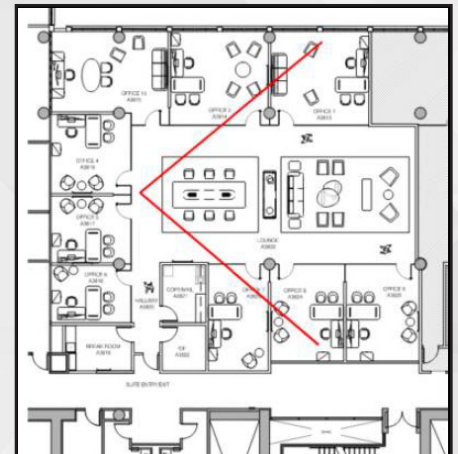
SUITE ENTRY – OPTION 1



SUITE ENTRY – OPTION 2

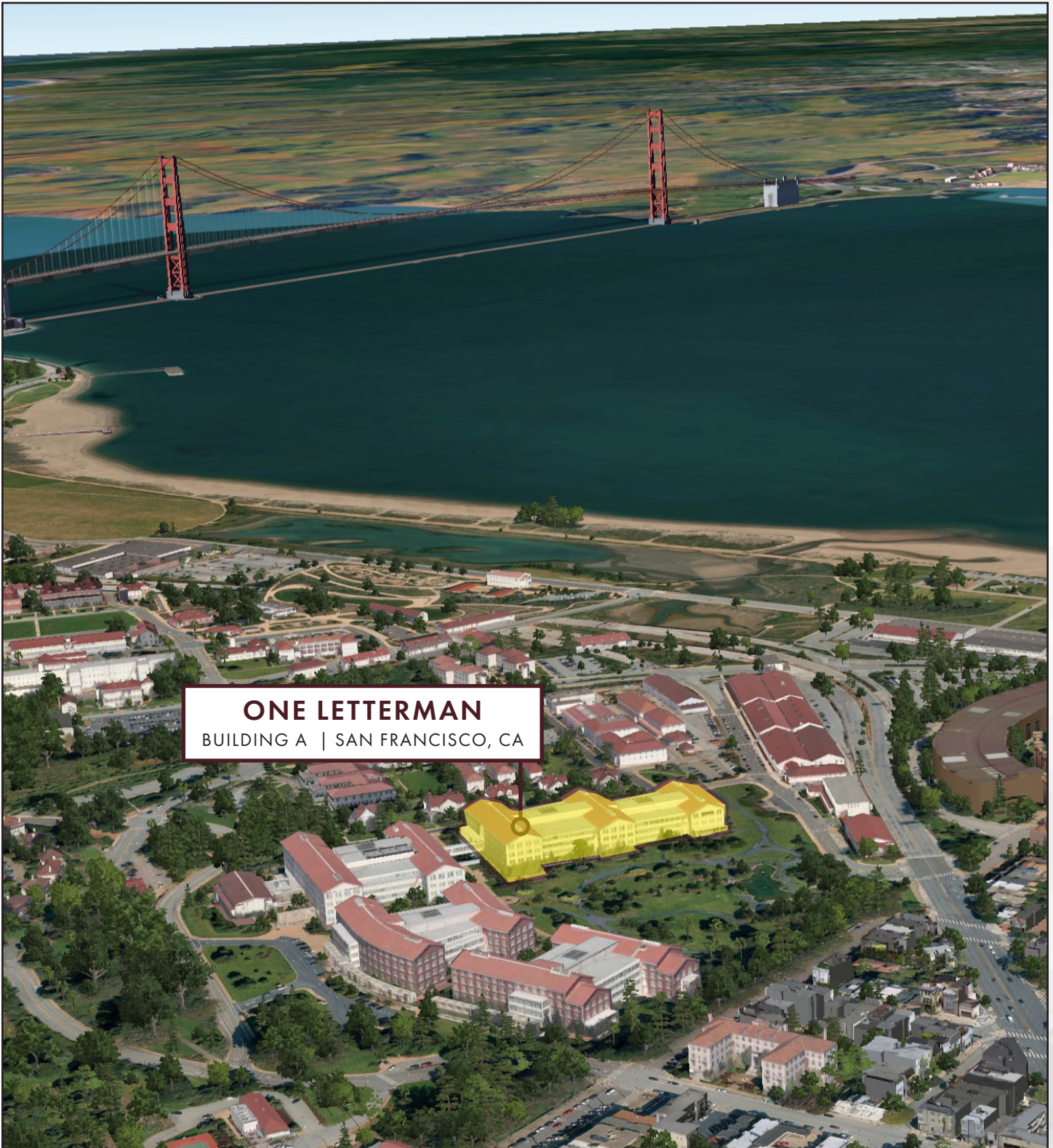


SUITE LOUNGE



*Sublandlord to cover the cost of demising. Other improvements shall be at Subtenant's cost.

AERIAL MAP



ONE LETTERMAN
BUILDING A | SAN FRANCISCO, CA

NEWMARK

 **LUMINATE**

Jennifer Essner Senior Managing Director
415-407-4286 | Jennifer.Essner@nmrk.com
CA RE Lic. #01442525