

8680 Hayden Place

Creative flex space in Culver City's desirable Hayden Tract. Neighbors include TV, film and creative production companies such as Disney, Apple and Smashbox Studios.

FOR LEASE

59,200 Sq Ft.

\$2.40 PSF NNN

NNN ~ \$0.23 PSF



Leased and Managed by:
General Real Estate Management
For information contact:
Ryan Everest

(310) 828-5700 Ext 108 Office
(310) 756-8462 Mobile
Ryan@generalrealestate.net
DRE #01980771

30 foot high ceilings with
sky lights. Polished
concrete floors, built out
offices, conference rooms
and kitchen/break rooms



The Location

The Hayden Tract hosts a high concentration of design studios, creative agencies, startups and established media companies.

Beyond workspaces, the Hayden Tract is surrounded by restaurants, cafes, fitness studios and cultural amenities, contributing to an energetic and engaging atmosphere. With its continued growth and reputation as a center for creativity and innovation, the Hayden Tract offers an exceptional location for forward-thinking businesses aiming to establish themselves in a dynamic and influential part of Los Angeles.

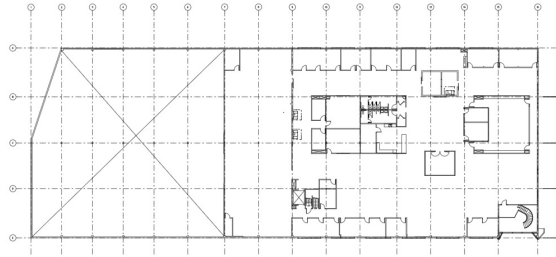
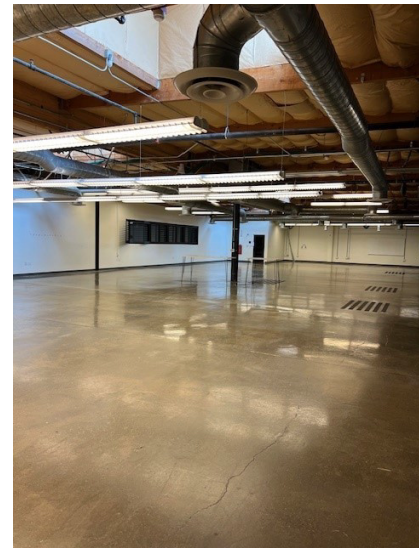
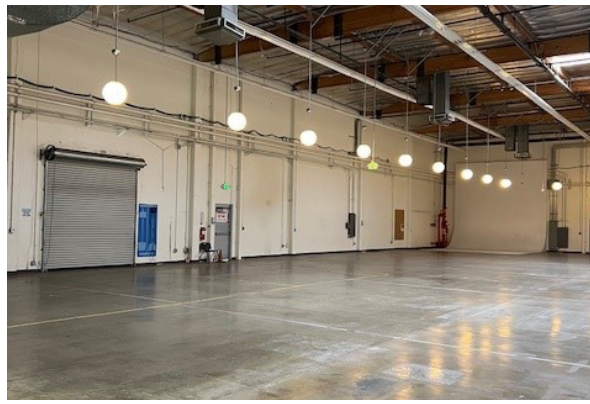


EXHIBIT A - SECOND FLOOR PLAN

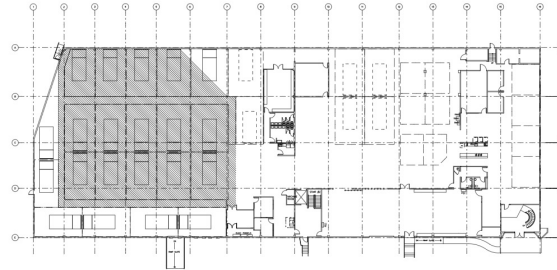


EXHIBIT A - FIRST FLOOR PLAN



8680 Hayden Place Property Features

- Excellent Culver City location with easy access to the 10 and 405 Freeway.
- Amenity rich area with retail, restaurants and lodging close by.
- Surface lot offers convenient parking - 128 spaces.
- 3 Dock high loading doors.

Power Specifications:

- 1200-amp 227/480v main and 1200 amp 120/208v Main with ample distribution throughout the building.

For information or to schedule a tour contact:

Ryan Everest
Ryan@generalrealestate.net
(310) 828-5700 ext 108
DRE#01980771

