

TO LET

Ground and lower ground
floor mews office

923 sq ft



29a ADAM & EVE MEWS

Kensington W8 6UG

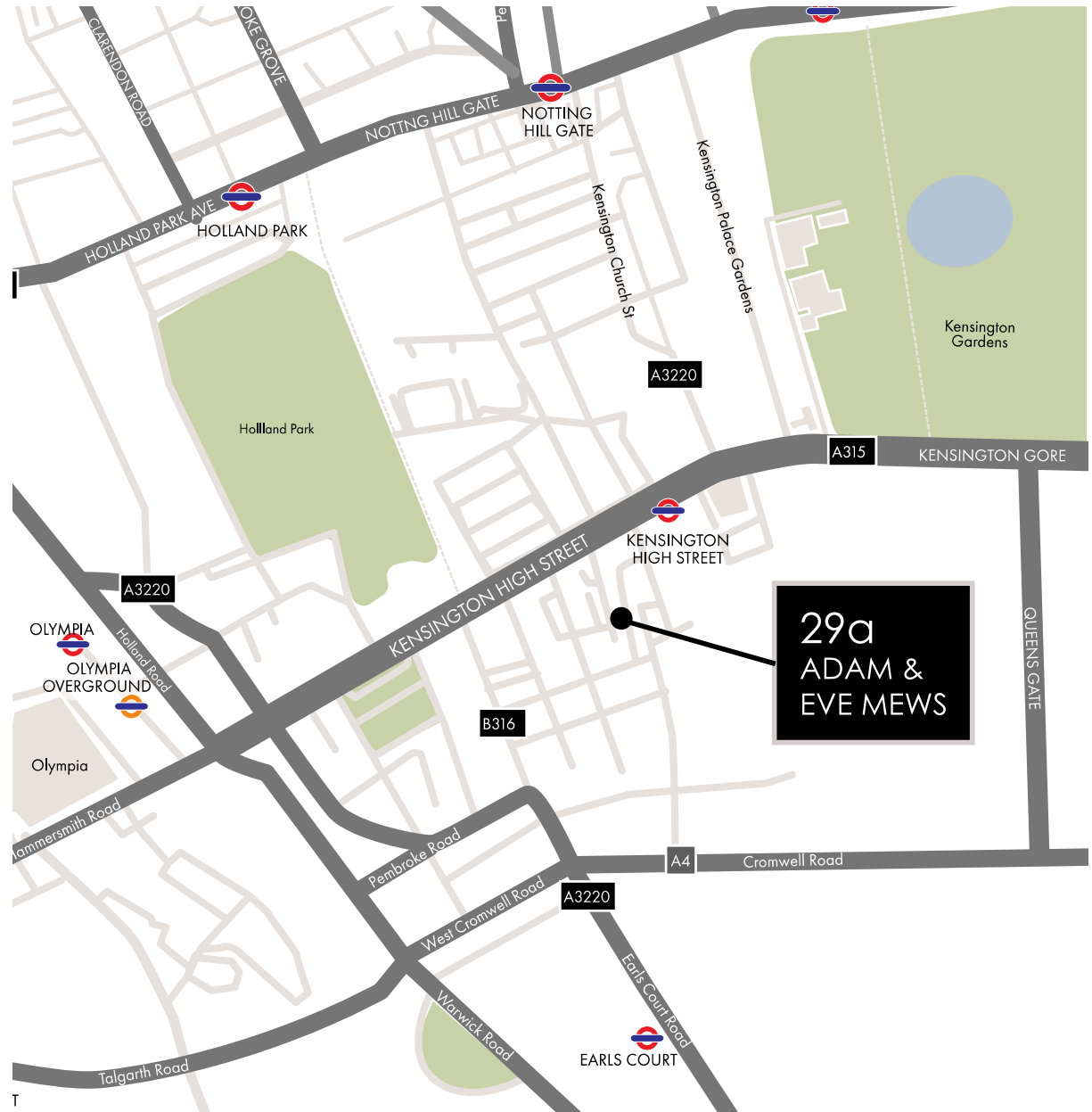
LOCATION

29a Adam and Eve Mews is situated just off Kensington High Street. The building is a 4 minute walk from Kensington High Street underground (District & Circle Line), and a 17 minute walk from Kensington Olympia (overground services to Clapham Junction to the south and Willesden Junction to the north).

Adam & Eve Mew entrance



Hyde Park



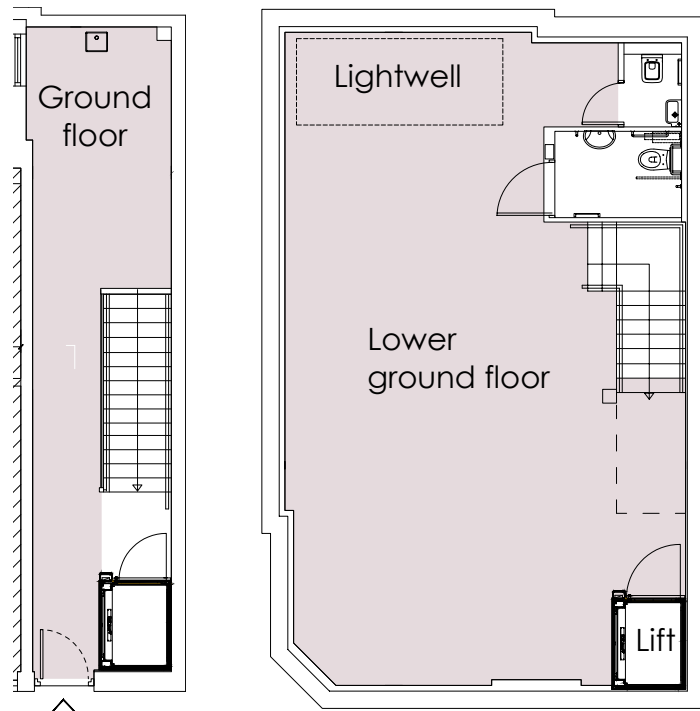


DESCRIPTION

29A Adam and Eve Mews is a traditional mews with a mixture of commercial and residential occupiers. The office occupies the ground and lower ground floor of this attractive building which has been extensively refurbished.

AMENITIES

- Close to local amenities and shopping
- Fitted Kitchen
- Within 4 minutes of underground station (District & Circle line)
- Large Lightwell on lower ground floor
- Period Mews Office
- Character space
- Two WCs (including disabled WC)
- Disabled Lift



ACCOMODATION

FLOOR	sq ft	sq m
Ground floor	213	20
Lower Ground floor	710	66
Total	923	86

RENT

£35,000 per annum (£37.92 per sq ft)

TERMS

New lease from the landlord for a term to be agreed.

SERVICE CHARGE

To be confirmed

RATES

£12.87 per sq ft approx. (2018/19) to be confirmed with local authority

EPC

Rated B, (38)

FOR FURTHER INFORMATION
PLEASE CONTACT SOLE AGENTS

Jack Realey / Celia Gore
jrealey@frostmeadowcroft.com
cgore@frostmeadowcroft.com

020 8748 1200



Misrepresentation Act 1967: These particulars are believed to be correct but their accuracy is not guaranteed and they do not form part of any contract. Unless otherwise stated, all prices and rents are quoted exclusive of VAT. Brochure June 2019