



1156 Plett Rd | Cadillac, MI 49601

PROPERTY OVERVIEW

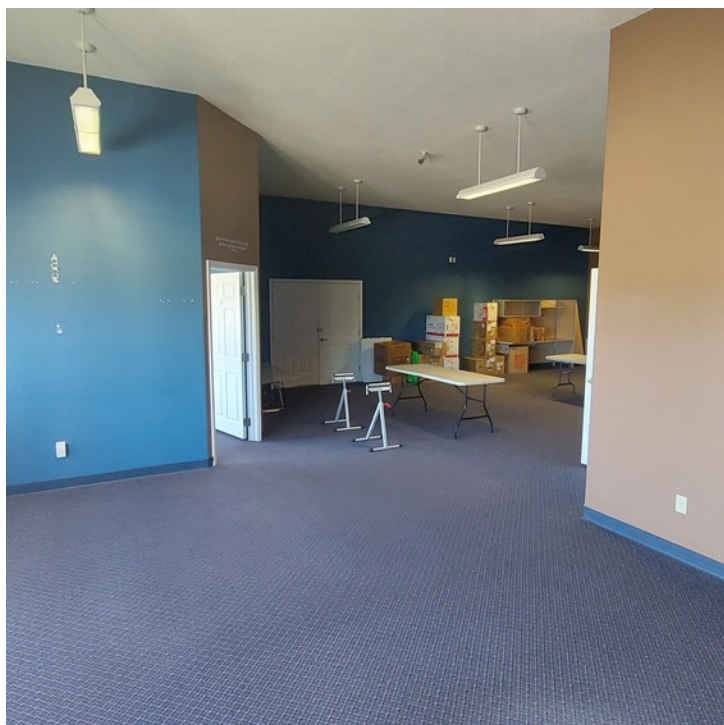
Approximately 2,040 Square Feet of Commercial space available for Lease on the high traffic corner of Plett and 13th Street. Versatile space is just waiting to be transformed into your vision of the perfect retail space or office. Ample parking available in the large parking lot.

PROPERTY HIGHLIGHTS

- Five offices
- Front and rear parking
- High-quality interior
- Great visibility along high-traffic thoroughfare

AVAILABLE SF:	2,040 SF
LEASE RATE:	\$1,650.00 PER MONTH (MG)
YEAR BUILT:	2005

KEVIN QUERY | Associate | Realtor | 231.929.2955 | kquery@threewest.com

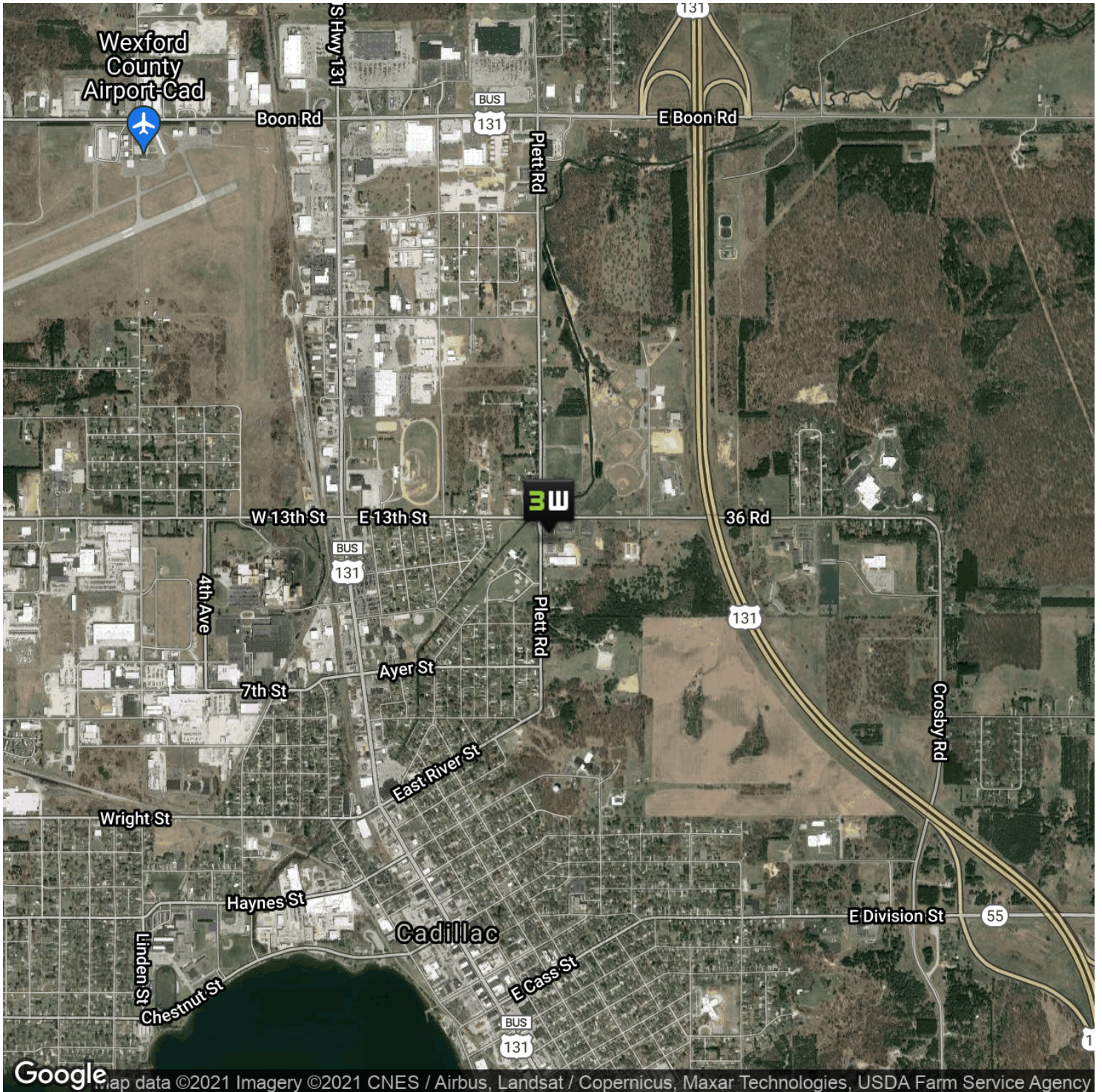


KEVIN QUERY // Associate | Realtor // 231.929.2955 // kquery@threewest.com



OFFICE BUILDING FOR LEASE

1156 Plett Rd



KEVIN QUERY // Associate | Realtor // 231.929.2955 // kquery@threewest.com

www.threewest.com

3W **THREE WEST**
COMMERCIAL REAL ESTATE | CONSULTING