

237 PARK AVENUE

237
PARK

237 PARK

LONG-TERM
SUBLEASE

Partial 19th-
11,373 RSF

TERM

Thru 2/28/2025

POSSESSION

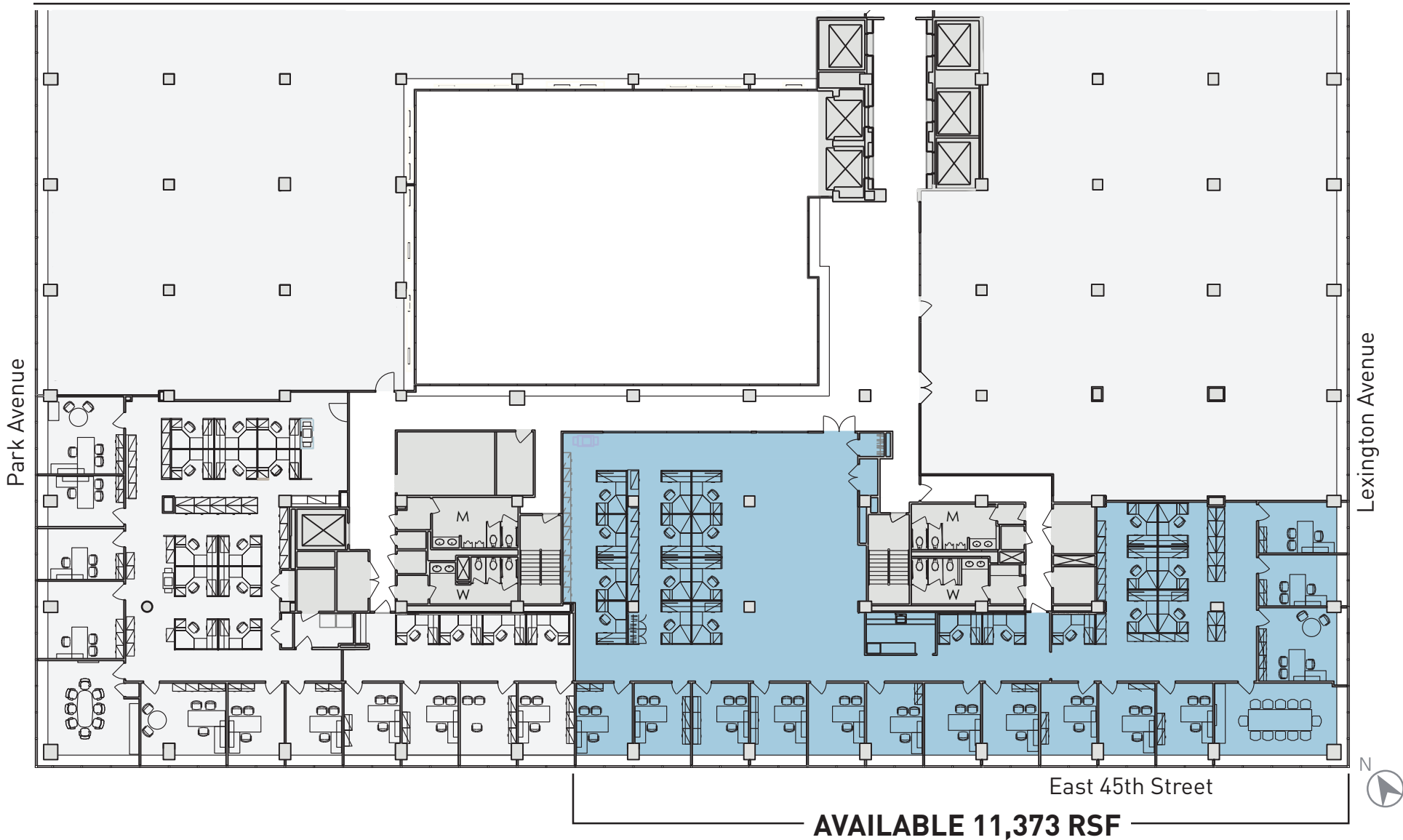
Immediate

**\$75.00 PSF
WITH WORK**

Edward M. Lederman

212.984.8333

edward.lederman@cbre.com



© 2019 CBRE, Inc. This information has been obtained from sources believed reliable. We have not verified it and make no guarantee, warranty or representation about it. Any projections, opinions, assumptions or estimates used are for example only and do not represent the current or future performance of the property. You and your advisors should conduct a careful, independent investigation of the property to determine to your satisfaction the suitability of the property for your needs.

Edward M. Lederman
 212.984.8333
 edward.lederman@cbre.com