



17,650 SF HIGH CUBE BUILDING + 12,000 SF LAND

EAST FLATBUSH - RIGHT OFF KINGS HIGHWAY

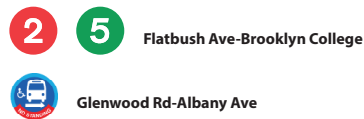
FEATURES:

- Building Dimensions: 271.68' x 65'
- Building Sq. Ft.: 17,650
- Lot Sq. Ft.: 29,650
- 40' Ceiling Height
- Two 25' Overhead Doors
- 2,000 SF Office Space
- Column Free
- Solar System
- 1,500 Amps Power
- Heavy Floor Load

NEARBY:

- Kings Highway
- Linden Boulevard
- Utica Avenue

Transportation:



SALE PRICE:

UPON REQUEST

REAL ESTATE TAX:

\$57,295.00

848 EAST 43RD STREET, BROOKLYN, NY

BLOCK: 7726

LOT: 30

ZONING: M1-1

For Information About This Property
Contact Exclusive Agents:

David Junik, Partner
djunik@pinnaclereny.com
718-371-6406

Nechama Liberow, Salesperson
nliberow@pinnaclereny.com
718-778-6006



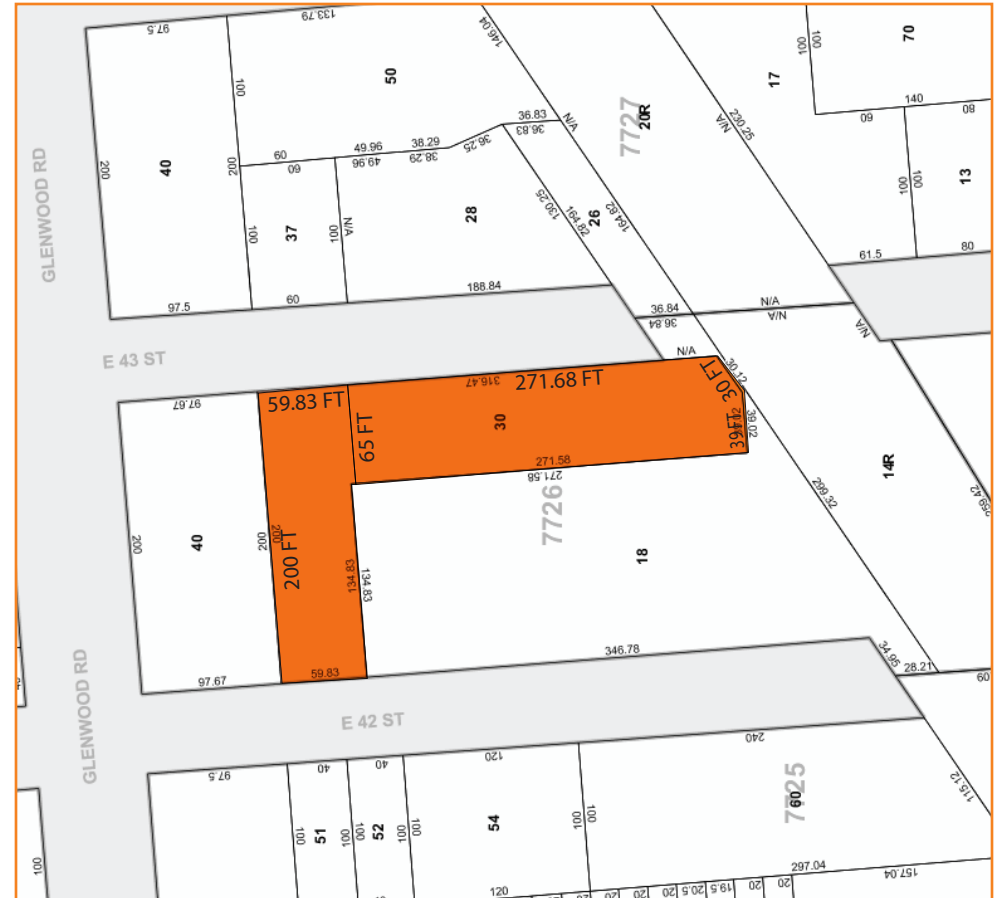
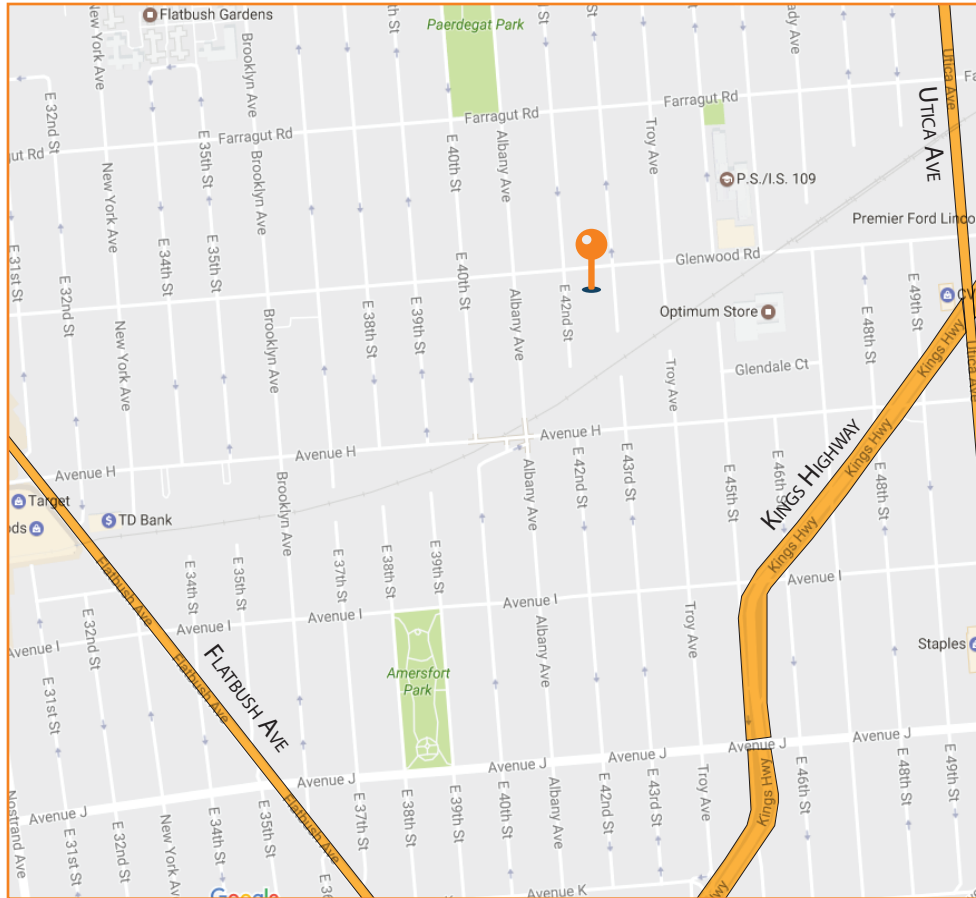
PINNACLE REALTY

OF NEW YORK, LLC

www.pinnacleereny.com

46-34 11th Street • Long Island City, NY 11101

718-784-8282





PINNACLE REALTY

OF NEW YORK, LLC

www.pinnaclereny.com

46-34 11th Street • Long Island City, NY 11101

718-784-8282





PINNACLE REALTY

OF NEW YORK, LLC

www.pinnaclereny.com

46-34 11th Street • Long Island City, NY 11101

718-784-8282

