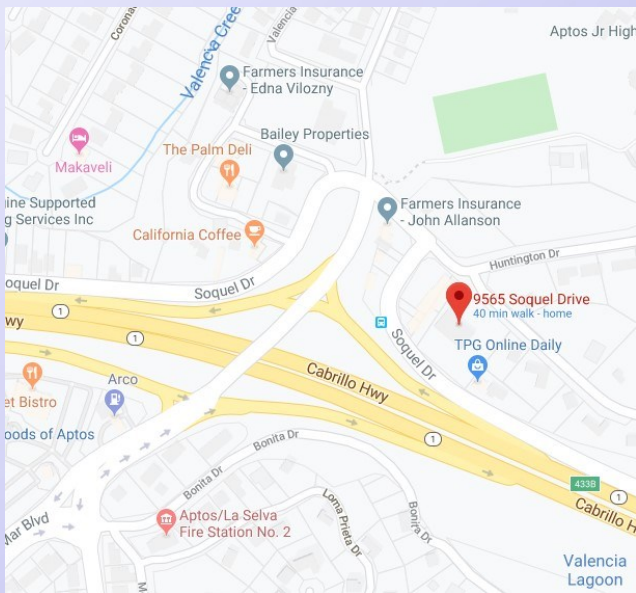


AVAILABLE FOR LEASE

9565 SOQUEL DRIVE, APTOS

OFFICE SPACE FOR LEASE



APTOS RIDGE

Suite 200 | +/- 2,285 SF

- PRIVATE OFFICES & CONFERENCE ROOMS
- EXPANSIVE GLASS AND NATURAL LIGHT
- OPERABLE WINDOWS
- CONVENIENT ACCESS TO HIGHWAY 1
- ON-SITE PARKING
- BREAK AREA AND COMMON USE SHOWER

\$1.65 SF/MO | NNN \$0.55

KOLTON PICO

DRE #02006875

kpico@sheldonwiseman.com

JIM WISEMAN

DRE #01104278

jwiseman@sheldonwiseman.com

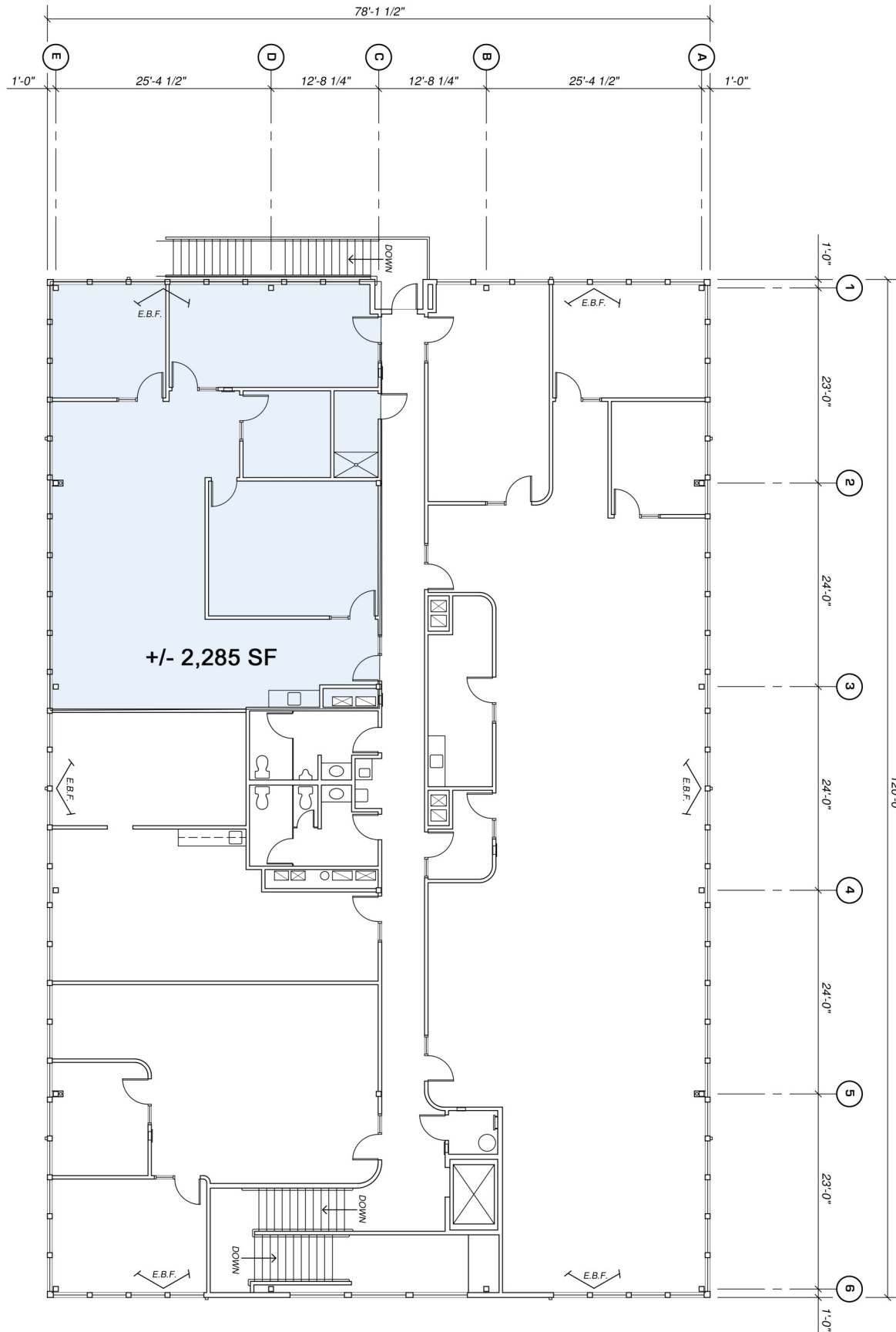


While the information contained herein is deemed reliable, we cannot guarantee its accuracy. All information should be verified.

1200 Pacific Avenue, Suite 390 ■ Santa Cruz, CA 95060
Tel: 831 ■ 454 ■ 9400 ■ Fax: 831 ■ 459 ■ 7988 ■ www.sheldonwiseman.com

INTEGRITY ■ SERVICE ■ RESULTS

Floor Plan 2nd Floor—9565 Soquel



SUITE 200

While the information contained herein is deemed reliable, we cannot guarantee its accuracy. All information should be verified.