

FOR SALE

13.74± Acres Industrial Land

South East Corner of McKinley and Louise Avenues

1850 E. Louise Avenue, Lathrop, CA



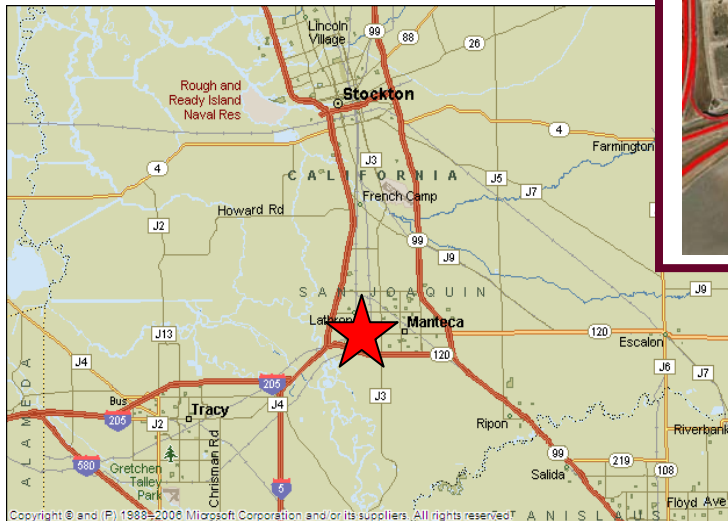
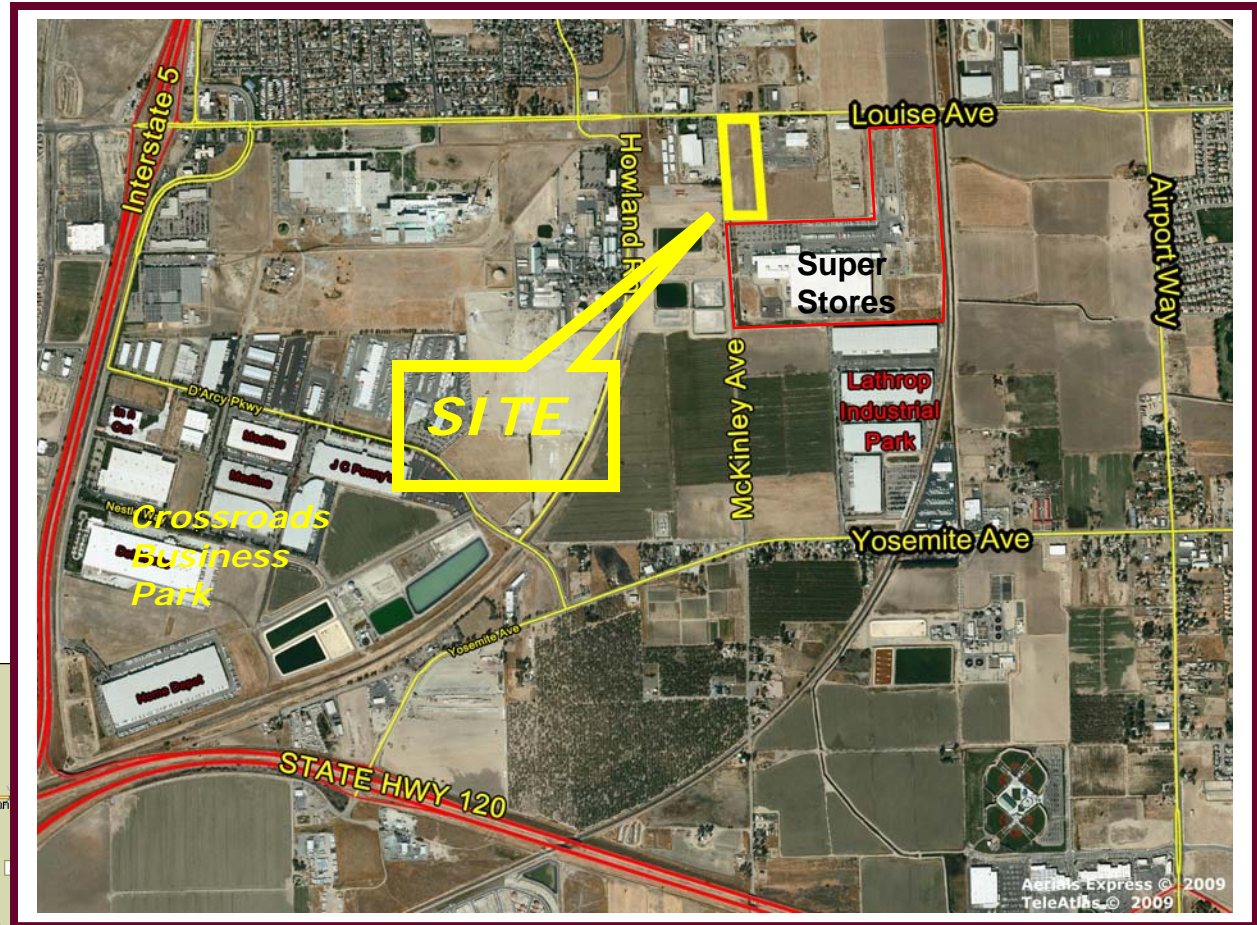
Features:

- **Zoning:** Service Commercial (CS), per City of Lathrop
- **APN:** 198-160-01
- **Parcel Dimensions:** 772' x 471'±
- **Services:** Water and Sewer – City of Lathrop; Electrical and Gas: PG&E
- **Topography:** Flat and generally level
- Easy access from Interstate 5 at Louise Avenue intersection
- Adjacent 24± Acre Parcel with 47,000± SF building also available (2050 E. Louise Ave.)

Sales Price: \$2,693,315.00 (\$4.50 PSF)

1850 E. Louise Avenue, Lathrop, California

13.74± Acres
APN 198-160-01
San Joaquin County



Contact: **Mark J. Reckers, SIOR**

CA DRE LIC #00938704

mreckers@lee-associates.com

209-983-1111