



NAIAvant

For Sale
±26.11 Acres
Chapin, South Carolina

Single Family Development Tract

Chapin, South Carolina

For more information

Nick Stomski, SIOR

+1 803 744 9859 • nstomski@naiavant.com

Property Features

- ±26.11 acres located near Lake Murray in Chapin, South Carolina
- The property has been fully engineered and drawings are included in sales price
- Located within Smallwood Estates off Dreher Island Road near St. Peters Church Road
- The site lays out for up to 40 single family residential lots
- The site is zoned RD, Restrictive Development - Lexington County
- Chapin school district
- Water and sewer provided by Utilities, Inc.
System will need to be upgraded. Cost estimates may be provided.
- **Sales Price - \$200,000**

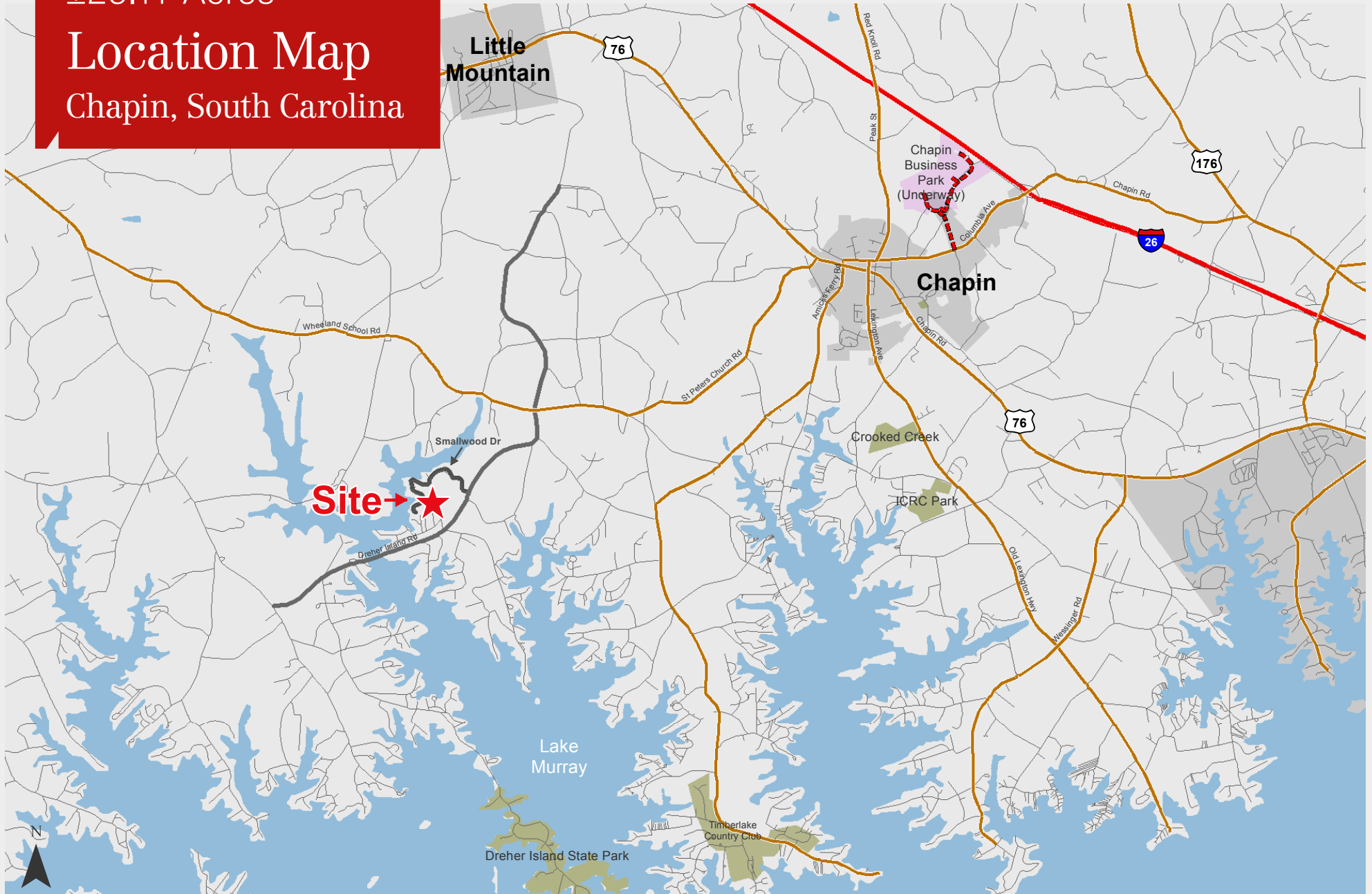
NO WARRANTY OR REPRESENTATION, EXPRESS OR IMPLIED, IS MADE AS TO THE ACCURACY OF THE INFORMATION CONTAINED HEREIN, AND THE SAME IS SUBMITTED SUBJECT TO ERRORS, OMISSIONS, CHANGE OF PRICE, RENTAL OR OTHER CONDITIONS, PRIOR SALE, LEASE OR FINANCING, OR WITHDRAWAL WITHOUT NOTICE, AND OF ANY SPECIAL LISTING CONDITIONS IMPOSED BY OUR PRINCIPALS NO WARRANTIES OR REPRESENTATIONS ARE MADE AS TO THE CONDITION OF THE PROPERTY OR ANY HAZARDS CONTAINED THEREIN ARE ANY TO BE IMPLIED.

807 Gervais Street, Suite 301
Columbia, South Carolina 29201
+1 803.744.9800
www.naiavant.com

±26.11 Acres

Location Map

Chapin, South Carolina



±26.11 Acres

Aerial Map

Chapin, South Carolina



±26.11 Acres

Lot Layout

Chapin, South Carolina

50 Scale Sheet Nos. 2, 3 & 6

CURVE TABLE						
CURVE	LENGTH	RADIUS	CHORD BEARING	BETA	CHORD TANGENT	
C1	76.19	50.00	N0°36'00"E	87.011°	63.93	43.70
C2	102.52	90.00	S38°19'54"E	65°15'36"	97.87	57.63

