

FOR LEASE

# OFFICE/FLEX SPACE

14222  
HILLSDALE CIRCLE  
Omaha, NE 68137



## SOUTHWESTERN PLAZA

SPACE AVAILABLE: 2,138 SF

LEASE RATE: \$9.00 PSF, NNN

- + 2017 estimated NNNs \$3.00 PSF
- + Premier southwest Omaha location
- + Signage available
- + Near restaurants and services
- + Front door parking
- + Access via signalized intersection
- + Built-out as office space, conference room, individual offices and break area



[www.cbre.us/omaha](http://www.cbre.us/omaha)

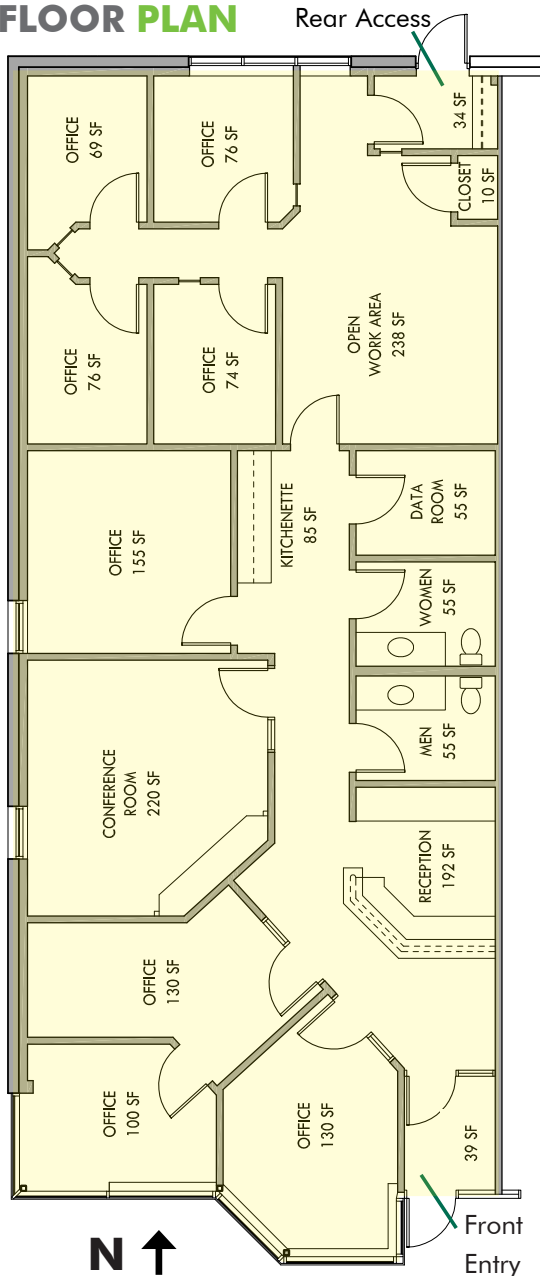
**CBRE** | **MEGA**  
Part of the CBRE affiliate network

# FOR LEASE | SOUTHWESTERN PLAZA OFFICE/FLEX SPACE

14222  
HILLSDALE CIRCLE  
Omaha, NE 68137



## FLOOR PLAN



## ADDITIONAL PHOTOS



## BUILDING INFORMATION

Lot Size	1.63 acres
Building Size	15,300 SF
Construction	Concrete, glass
Year Built	1997
Zoning	Mixed Use (MU)



## CONTACT US

### MARK OBERMEYER

First Vice President  
+1 402 697 5825  
mobermeyer@cbre-mega.com

### HEIDI RUSH

Vice President  
+1 402 697 5820  
hrush@cbre-mega.com

### DEAN T. HOKANSON

Executive Vice President  
+1 402 697 5831  
dhokansonsr@cbre-mega.com

### CBRE | MEGA

11213 Davenport St, Ste 300  
Omaha, NE 68154  
+1 402 334 8877

[www.cbre.us/omaha](http://www.cbre.us/omaha)

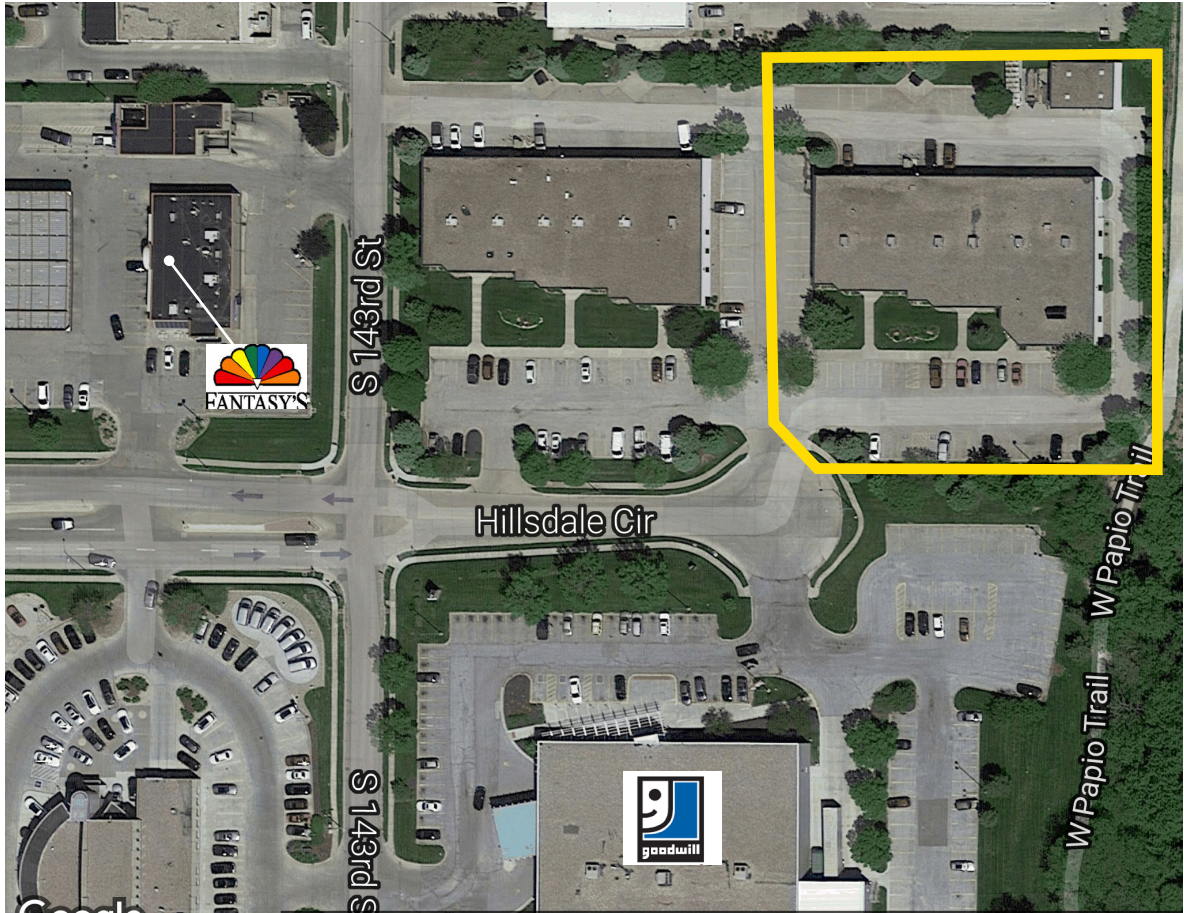
**CBRE | MEGA**  
Part of the CBRE affiliate network

FOR LEASE | SOUTHWESTERN PLAZA  
**OFFICE/FLEX SPACE**

**1422**  
**HILLSDALE CIRCLE**  
Omaha, NE 68137



**LOCATION AERIAL**



**CONTACT US**

**MARK OBERMEYER**

First Vice President  
+1 402 697 5825  
mobermeyer@cbre-mega.com

**HEIDI RUSH**

Vice President  
+1 402 697 5820  
hrush@cbre-mega.com

**DEAN T. HOKANSON**

Executive Vice President  
+1 402 697 5831  
dhokansonsr@cbre-mega.com

**CBRE | MEGA**

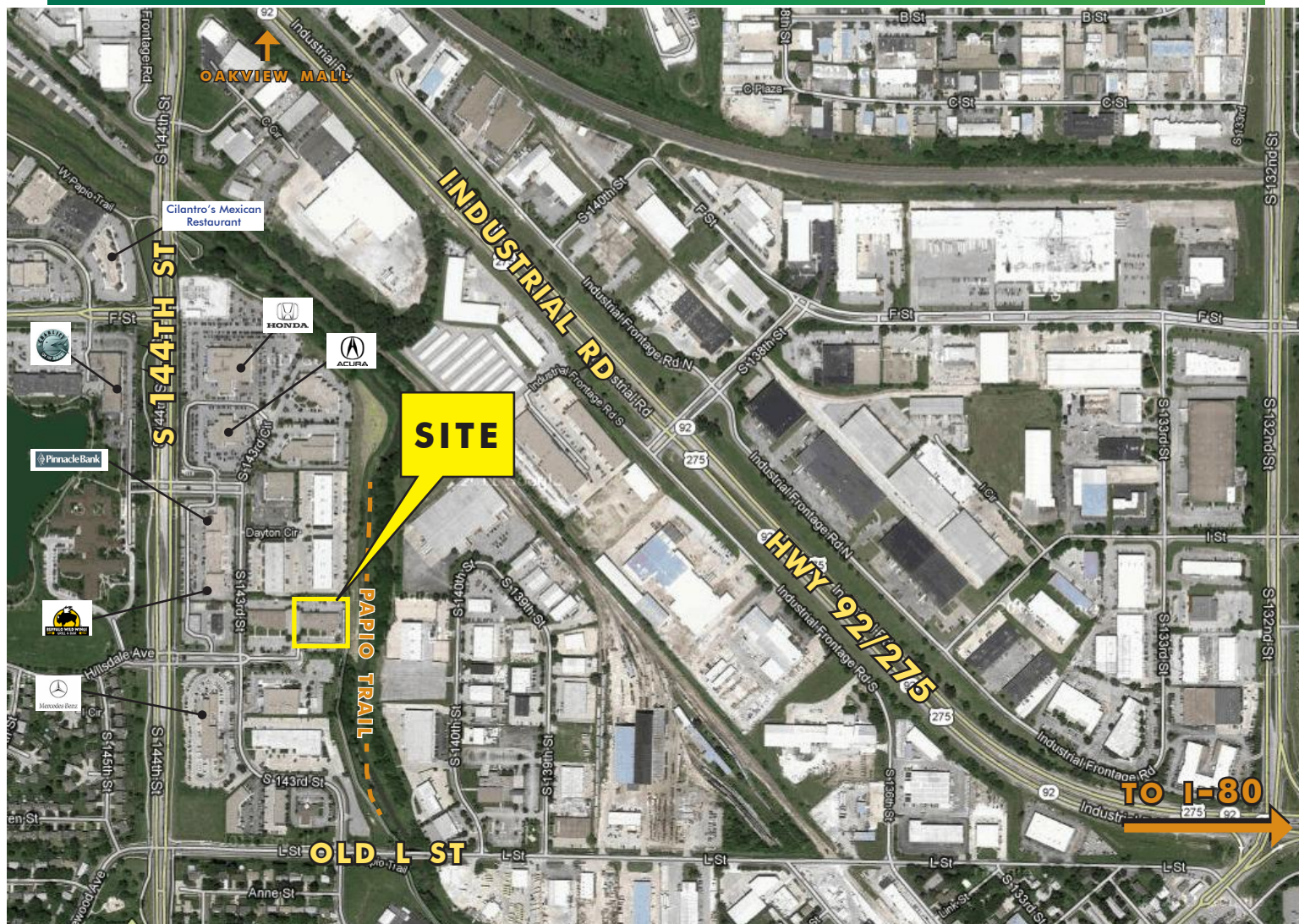
11213 Davenport St, Ste 300  
Omaha, NE 68154  
+1 402 334 8877

[www.cbre.us/omaha](http://www.cbre.us/omaha)

**CBRE | MEGA**  
Part of the CBRE affiliate network

# FOR LEASE | SOUTHWESTERN PLAZA OFFICE/FLEX SPACE

14222  
HILLDALE CIRCLE  
Omaha, NE 68137



## CONTACT US

### MARK OBERMEYER

First Vice President  
+1 402 697 5825  
mobermeyer@cbre-mega.com

### HEIDI RUSH

Vice President  
+1 402 697 5820  
hrush@cbre-mega.com

### DEAN T. HOKANSON

Executive Vice President  
+1 402 697 5831  
dhokansonsr@cbre-mega.com

### CBRE|MEGA

11213 Davenport St, Ste 300  
Omaha, NE 68154  
+1 402 334 8877

rev091917a © 2017 CBRE|MEGA, Inc. The information contained in this document has been obtained from sources believed reliable. While CBRE|MEGA, Inc. does not doubt its accuracy, CBRE|MEGA, Inc. has not verified it and makes no guarantee, warranty or representation about it. It is your responsibility to independently confirm its accuracy and completeness. Any projections, opinions, assumptions or estimates used are for example only and do not represent the current or future performance of the property. The value of this transaction to you depends on tax and other factors which should be evaluated by your tax, financial and legal advisors. You and your advisors should conduct a careful, independent investigation of the property to determine to your satisfaction the suitability of the property for your needs.

All marks displayed on this document are the property of their respective owners. Photos herein are the property of their respective owners and use of these images without the express written consent of the owner is prohibited.

[www.cbre.us/omaha](http://www.cbre.us/omaha)

**CBRE|MEGA**  
Part of the CBRE affiliate network