

FOR LEASE

10,000 SF Retail Space Available

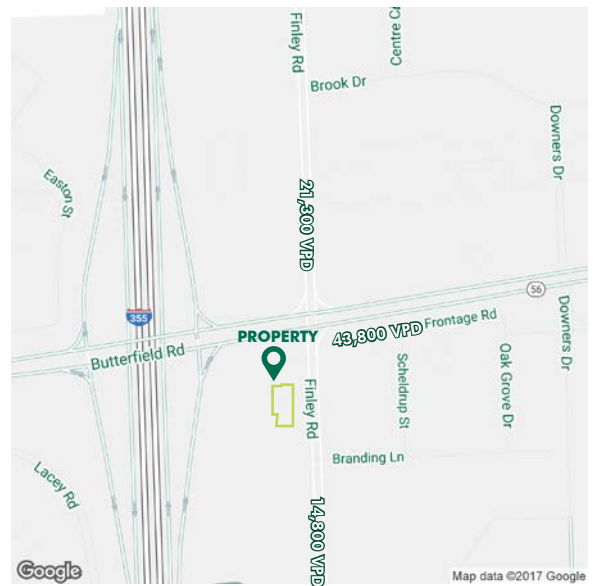
3000 FINLEY ROAD, DOWNERS GROVE, IL 60515

RETAIL



PROPERTY INFO

- + Excellent visibility to Finley/Butterfield Road intersection
- + Monument signage available on Butterfield
- + Dedicated parking field
- + Located right next to I-355
- + Ideal for all commercial uses
- + Surrounding retailers include:



www.cbre.com/3000finley

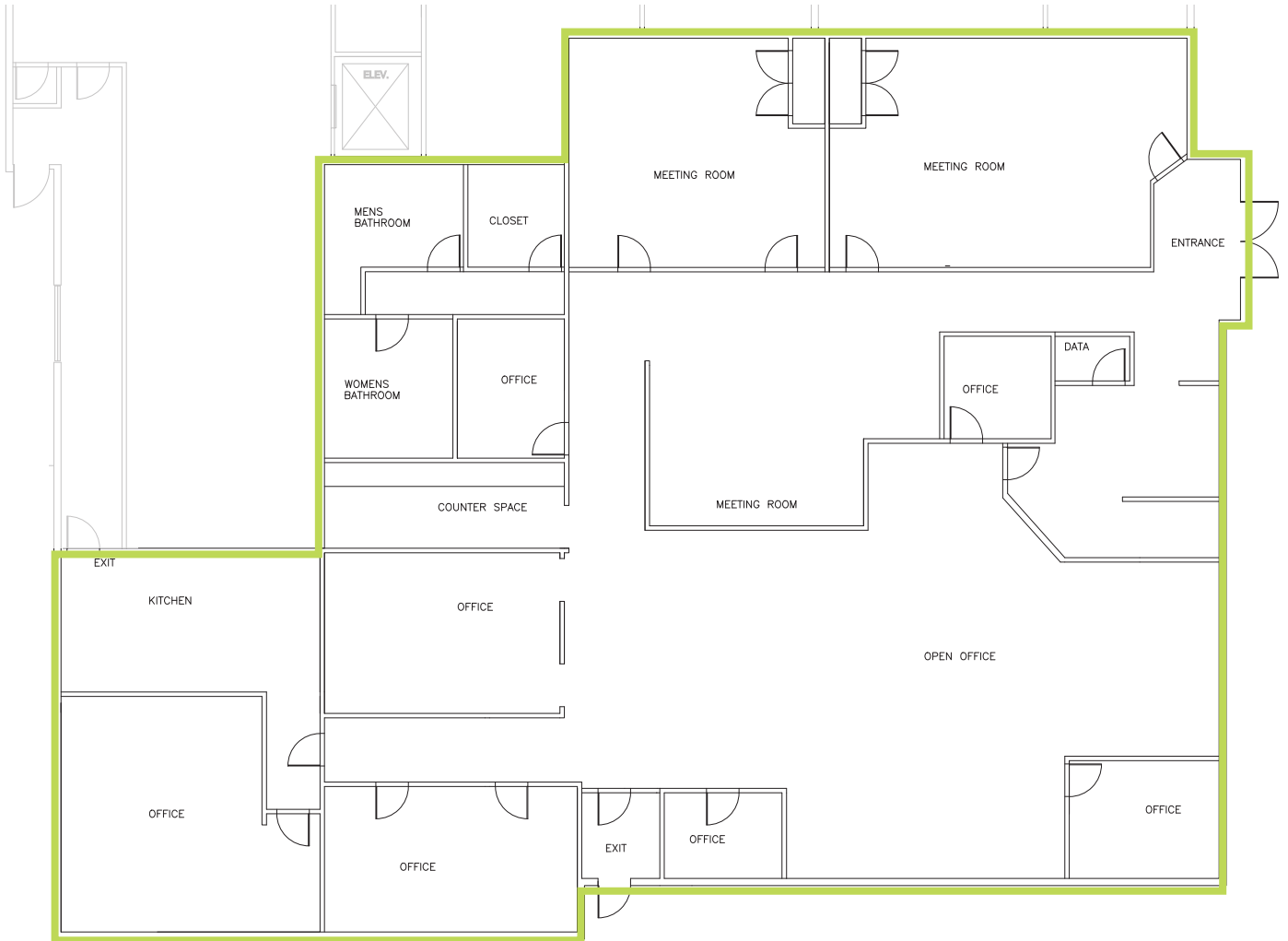


FOR LEASE

10,000 SF Retail Space Available

3000 FINLEY ROAD, DOWNERS GROVE, IL 60515

RETAIL



SPACE DETAILS

- + 800 AMPS
- + ±15 Tons of HVAC
- 3 Units

FOR LEASE

10,000 SF Retail Space Available

3000 FINLEY ROAD, DOWNERS GROVE, IL 60515

RETAIL

2016 Demographics

	1 Mile	3 Mile	5 Mile
Population	7,242	83,057	268,271
Avg HH Income	\$94,392	\$104,545	\$107,386
Daytime Population	34,222	115,007	233,012

Monument Signage



CONTACT US

Kim McGuire

+1 312 935 1974
kim.mcguire@cbre.com

Pam Miskowicz

+1 630 573 1274
pam.miskowicz@cbre.com

© 2016 CBRE, Inc. This information has been obtained from sources believed reliable. We have not verified it and make no guarantee, warranty or representation about it. Any projections, opinions, assumptions or estimates used are for example only and do not represent the current or future performance of the property. You and your advisors should conduct a careful, independent investigation of the property to determine to your satisfaction the suitability of the property for your needs. Photos herein are the property of their respective owners and use of these images without the express written consent of the owner is prohibited. CBRE and the CBRE logo are service marks of CBRE, Inc. and/or its affiliated or related companies in the United States and other countries. All other marks displayed on this document are the property of their respective owners.