

660 BAY BOULEVARD

CHULA VISTA, CA 91910

FOR LEASE | ±1,590 SF OFFICE SPACE



PROJECT SUMMARY

- Modern two-story ±34,482 SF building with interior garden area
- Recently renovated with new efficient layout
- Elevator served
- Located in Chula Vista on busy Bay Boulevard with direct access to I-5 at J Street
- Close proximity to shopping, restaurants, H Street trolley/bus station
- High visibility from Interstate-5
- Gateway entrance to the Chula Vista Marina

SUITE 211: ±1,590 RSF AVAILABLE

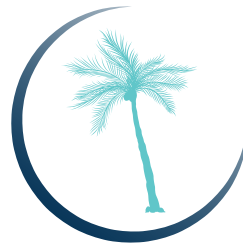
LEASE RATE: \$2.10/SF GROSS + ELECTRIC



GREAT FREEWAY ACCESS



ELEVATOR SERVED



LUSH INTERIOR GARDEN



ABUNDANT PARKING



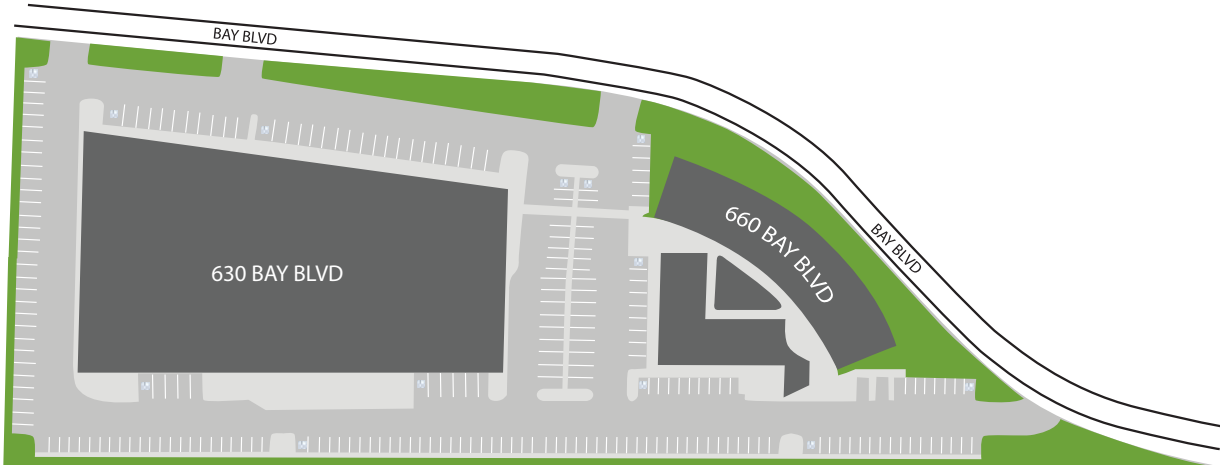
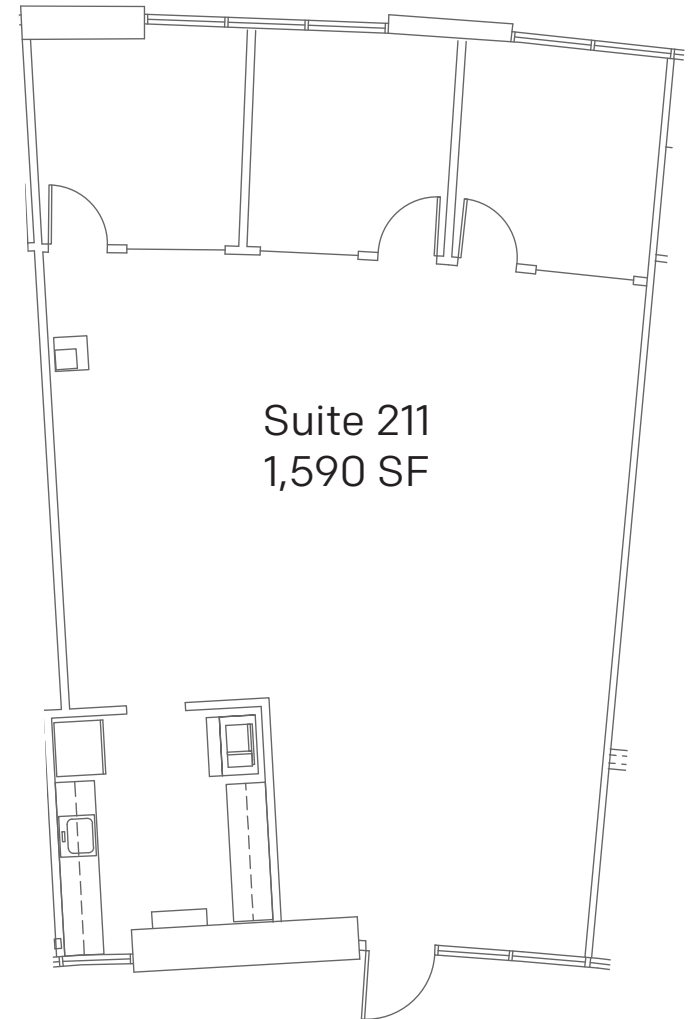
4 MINUTES TO TROLLEY

TRACY CLARK
Senior Vice President
License #00641800

KIMBERLY CLARK ESQ.
Vice President
License #01439305

CURT PERRY
Vice President
License #01466077

Voit
REAL ESTATE SERVICES

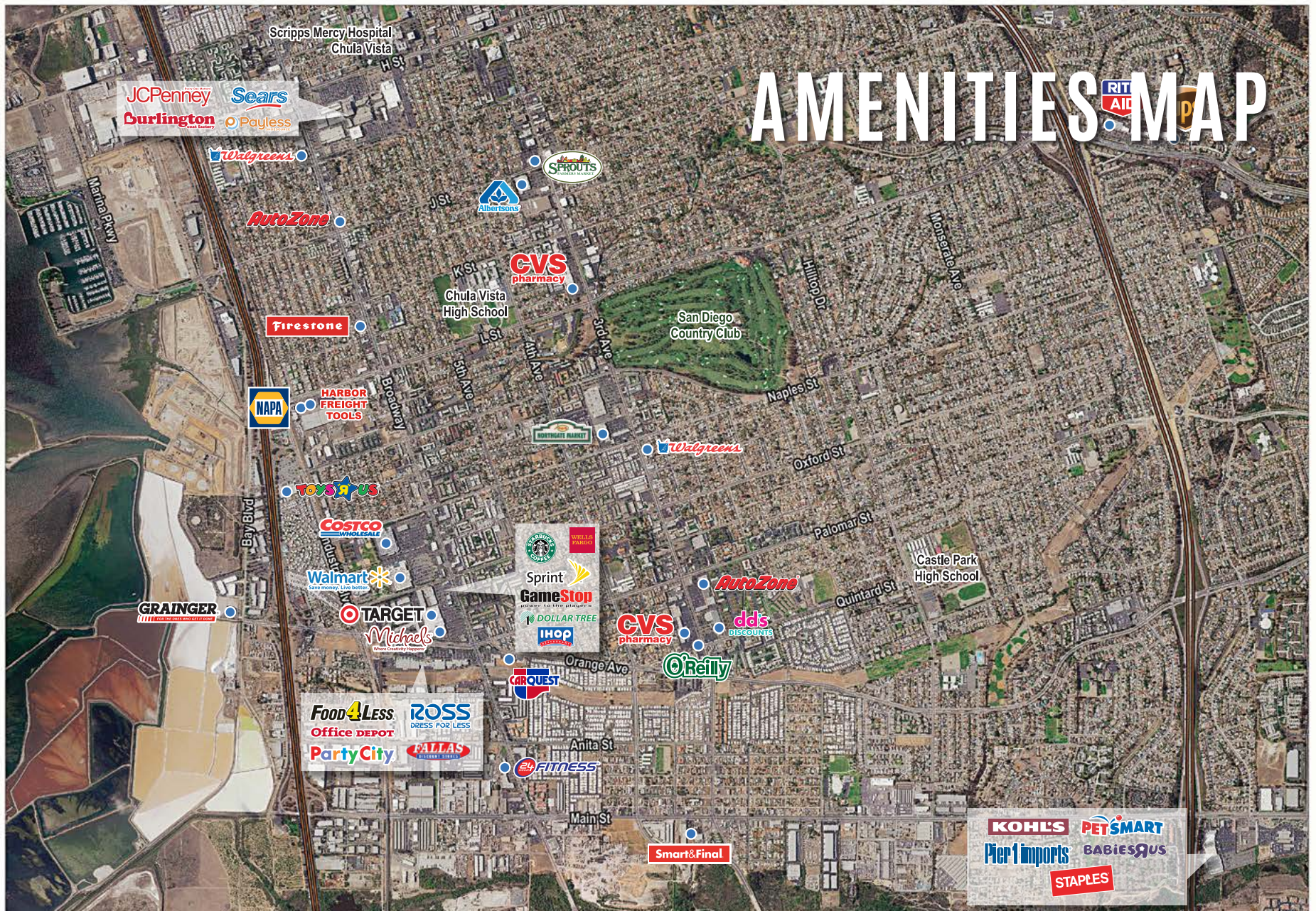


TRACY CLARK
Senior Vice President
License #00641800

KIMBERLY CLARK ESQ.
Vice President
License #01439305

CURT PERRY
Vice President
License #01466077

Voit
REAL ESTATE SERVICES



TRACY CLARK
 Senior Vice President
 License #00641800

KIMBERLY CLARK ESQ.
 Vice President
 License #01439305

CURT PERRY
 Vice President
 License #01466077

Voit
 REAL ESTATE SERVICES

DRIVE TIMES



TRACY CLARK

Senior Vice President | Lic. #00641800
858.458.3339 | tclark@voitco.com

KIMBERLY CLARK, ESQ.

Vice President | Lic. #01439305
858.458.3343 | kclark@voitco.com

CURT PERRY

Vice President | Lic. #01466077
858.458.3304 | cperry@voitco.com



REAL ESTATE SERVICES

Licensed as a Real Estate Broker and Salesperson by the DRE. The information contained herein has been obtained from sources we deem reliable. While we have no reason to doubt its accuracy, we do not guarantee it. ©2020 Voit Real Estate Services, Inc. All Rights Reserved.

COVID-19 PROPERTY TOURING PLAN

Voit Real Estate Services is committed to following the guidelines and protocols issued by Department of Real Estate, the Centers for Disease Control and Prevention (CDC), Federal, State, County and/or City Governments. The following guidelines will be adhered to when interacting with our clients and conducting tours.

Safety Protocols

MONITORING AND REPORTING

Brokers and Clients will be responsible to closely monitor their health, which will include daily temperature checks.



Brokers and Clients are required to avoid tours if:

- ✓ You have tested positive for COVID-19 and/or have been told by a medical professional to self-quarantine, due to illness or exposure to COVID-19
- ✓ You have recently traveled to any high-risk countries
- ✓ You are currently experiencing any flu-like signs or symptoms of COVID-19 including:
 - Cough
 - Shortness of breath or difficulty breathing
 - Fever (temperature of 100° F or higher)
 - Chills
 - Repeated shaking
 - Muscle pain
 - Headache
 - Sore throat
 - Loss of taste or smell

CLEANING PROTOCOLS

- Each space will be cleaned prior to a showing, with commonly used surfaces and high-touch items disinfected before and after
- All people entering the space must wash hands with soap and water, or use hand sanitizer immediately upon entry, before touring or inspecting the property
- Each site will be equipped with necessary products, including hand sanitizer and disinfecting wipes
- All parties involved in the tour will avoid touching surfaces whenever possible
- Fresh air will be introduced, by opening doors and windows, weather permitting

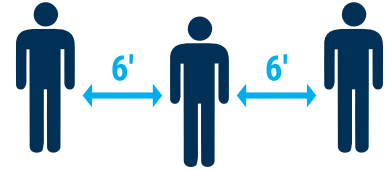


SOCIAL DISTANCING

Voit Real Estate Services will respect fellow Brokers and Clients by maintaining social distancing guidelines.

Voit will promote social distancing as follows:

- Utilize virtual tours when possible
- Maintain a distance of at least 6 feet or more between people
- Use appointment times to limit the number of people on a tour
- Avoid handshakes and similar greetings that break social distancing
- Avoid passing transaction materials such as pens, paper and keys
- Complete all transactions digitally when feasible
- Refrain from and discourage shared vehicle trips



FACE COVERINGS

The use of face coverings is required under the following circumstances:

- When touring in close proximity with others, especially in hallways, stairways, elevators and parking facilities
- In any room or enclosed area where other people are unable to socially distance
- Wherever required by the DRE, Federal, State, County and/or City guideline

Voit asks that you follow standard protocols to use your face covering effectively:

- Do not share face coverings
- Face covering should cover both the nose and the mouth
- Replace or wash your face covering daily



Enforcement

Voit will be doing everything possible to follow the guidelines and protocols issued by The Centers for Disease Control and Prevention (CDC), Federal, State, County and City Governments. While we understand that not all will agree with these new guidelines, they must be adhered to for the safety of all involved and for legal compliance.

**If you have questions or concerns about these guidelines,
please contact your Broker immediately, or feel free to contact
Human Resources at (714) 935-2316.**