

ARLINGTON STATION

±36,697 SF Industrial Bldg. For Lease

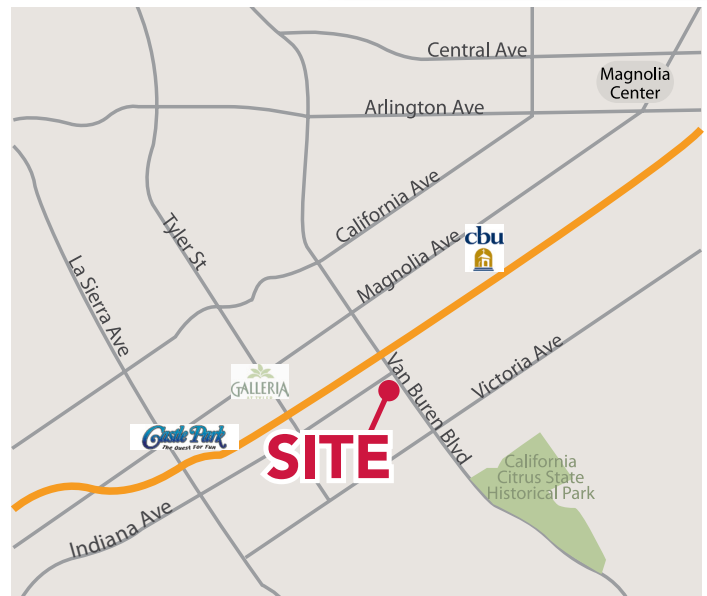
9565 Rudicill Street, Riverside, CA 92503

COMPLETED!



PROPERTY HIGHLIGHTS

- ±36,697 SF Total Building
- ±32,697 SF Warehouse
- ±4,000 SF Office
- Four (4) Dock High Doors
- One (1) Ground Level Door
- ESFR Sprinklers
- 480/277 Volts 3 Phase Power 800 Amps
- 28' Clear Hight
- Large Secured Yard
- Citrus Business Park Specific Plan
- Signalized Intersection
- Immediate access to 91 freeway at Van Buren Blvd



ARLINGTON STATION BLDG.2



CRAIG YOCUM

951.276.3625 | DRE#: 00942165
CYOCUM@LEERIVERSIDE.COM

ALEXEY ZABOLOTSKIKH

951.276.3606 | DRE#: 01428540
ALEX@LEERIVERSIDE.COM

TRENT KIMSEY

951.276.3649 | DRE#: 02066678
TKIMSEY@LEERIVERSIDE.COM

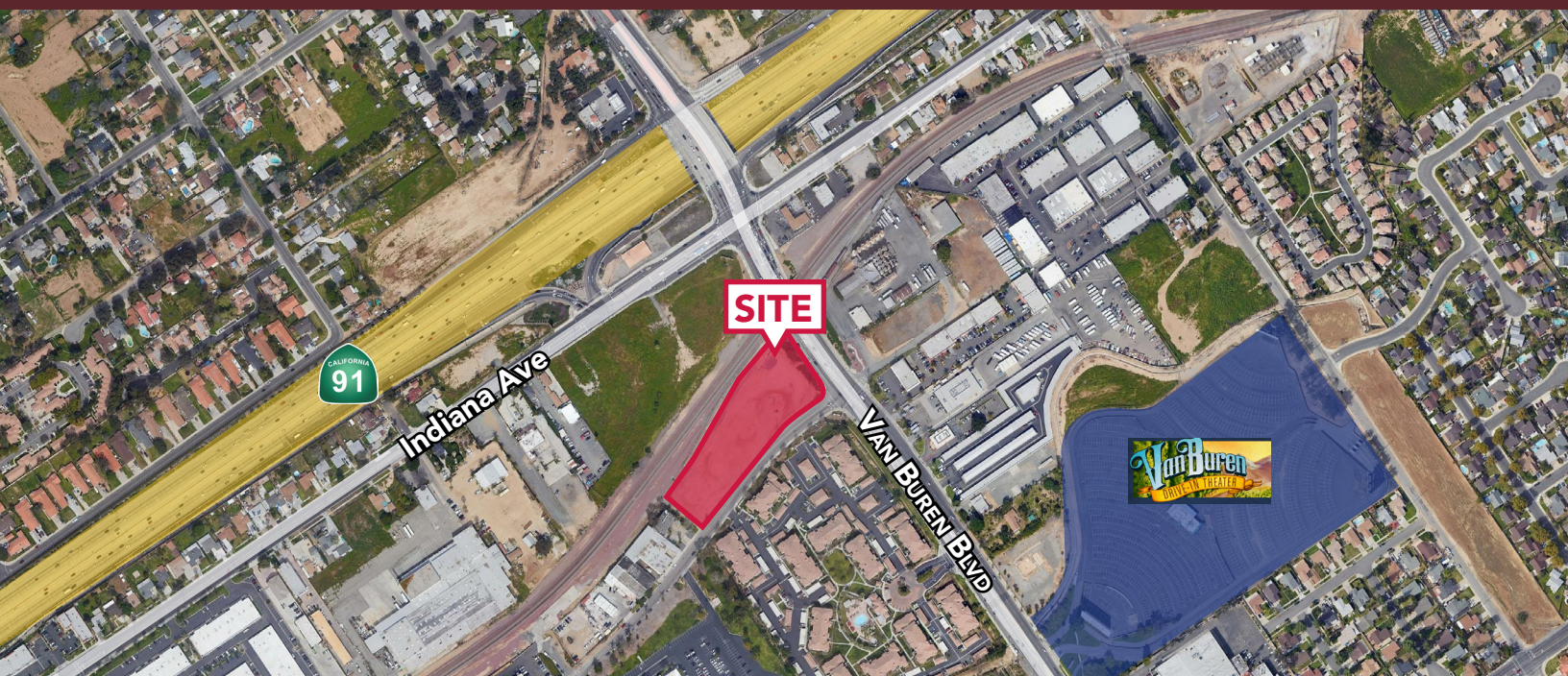
No warranty or representation has been made to the accuracy of the foregoing information. Terms of sale or lease and availability are subject to change or withdrawal without notice. Lee & Associates Commercial Real Estate Services, Inc. -Riverside.

ARLINGTON STATION

±36,697 SF Industrial Bldg. For Lease

9565 Rudicill Street, Riverside, CA 92503

LEE & ASSOCIATES
COMMERCIAL REAL ESTATE SERVICES



CRAIG YOCUM

951.276.3625 | DRE#: 00942165
CYOCUM@LEERIVERSIDE.COM

ALEXEY ZABOLOTSKIH

951.276.3606 | DRE#: 01428540
ALEX@LEERIVERSIDE.COM

TRENT KIMSEY

951.276.3649 | DRE#: 02066678
TKIMSEY@LEERIVERSIDE.COM

No warranty or representation has been made to the accuracy of the foregoing information. Terms of sale or lease and availability are subject to change or withdrawal without notice. Lee & Associates Commercial Real Estate Services, Inc. -Riverside.