

## RETAIL FOR LEASE

# RETAIL BUILDING ON HIGHLY VISIBLE CORNER

5 East Main Street, Madison Village , OH 44057



### OFFERING SUMMARY

<b>NUMBER OF UNITS:</b>	1
<b>AVAILABLE SF:</b>	1,250 SF
<b>LEASE RATE:</b>	\$2,500.00 per month (NNN)
<b>LOT SIZE:</b>	0.4 Acres
<b>BUILDING SIZE:</b>	1,250 SF
<b>RENOVATED:</b>	2015
<b>ZONING:</b>	Commercial
<b>MARKET:</b>	Cleveland

### PROPERTY OVERVIEW

1,250 SF free-standing retail building formerly Domino's in the heart of Madison Village. Ample parking with approximately 15 spots, great visibility for business. Minimum of 3 year lease, needs to be approved by current property owner.

### PROPERTY HIGHLIGHTS

- Free-Standing Building
- 15 Parking Spaces on Highly Visible Corner
- 1,250 SF
- All Utilities Present

**KW COMMERCIAL**  
440.255.5500  
7400 Center Street  
Mentor, OH 44060

**RICK OSBORNE JR.**  
Managing Director Of Commercial Real Estate  
O: 440.299.5190  
C: 216.219.0290  
rick.osbornejr@kw.com  
OH #2010001710

We obtained the information above from sources we believe to be reliable. However, we have not verified its accuracy and make no guarantee, warranty or representation about it. It is submitted subject to the possibility of errors, omissions, change of price, rental or other conditions, prior sale, lease or financing, or withdrawal without notice. We include projections, opinions, assumptions or estimates for example only, and they may not represent current or future performance of the property. You and your tax and legal advisors should conduct your own investigation of the property and transaction.

Each Office Independently Owned and Operated [osbornegroupohio.com](http://osbornegroupohio.com)

## RETAIL FOR LEASE

# RETAIL BUILDING ON HIGHLY VISIBLE CORNER

5 East Main Street, Madison Village , OH 44057



**KW COMMERCIAL**  
440.255.5500  
7400 Center Street  
Mentor, OH 44060

**RICK OSBORNE JR.**  
Managing Director Of Commercial Real Estate  
O: 440.299.5190  
C: 216.219.0290  
rick.osbornejr@kw.com  
OH #2010001710

We obtained the information above from sources we believe to be reliable. However, we have not verified its accuracy and make no guarantee, warranty or representation about it. It is submitted subject to the possibility of errors, omissions, change of price, rental or other conditions, prior sale, lease or financing, or withdrawal without notice. We include projections, opinions, assumptions or estimates for example only, and they may not represent current or future performance of the property. You and your tax and legal advisors should conduct your own investigation of the property and transaction.

Each Office Independently Owned and Operated [osbornegroupohio.com](http://osbornegroupohio.com)

# RETAIL FOR LEASE

## RETAIL BUILDING ON HIGHLY VISIBLE CORNER

5 East Main Street, Madison Village , OH 44057



**KW COMMERCIAL**  
440.255.5500  
7400 Center Street  
Mentor, OH 44060

**RICK OSBORNE JR.**  
Managing Director Of Commercial Real Estate  
O: 440.299.5190  
C: 216.219.0290  
rick.osbornejr@kw.com  
OH #2010001710

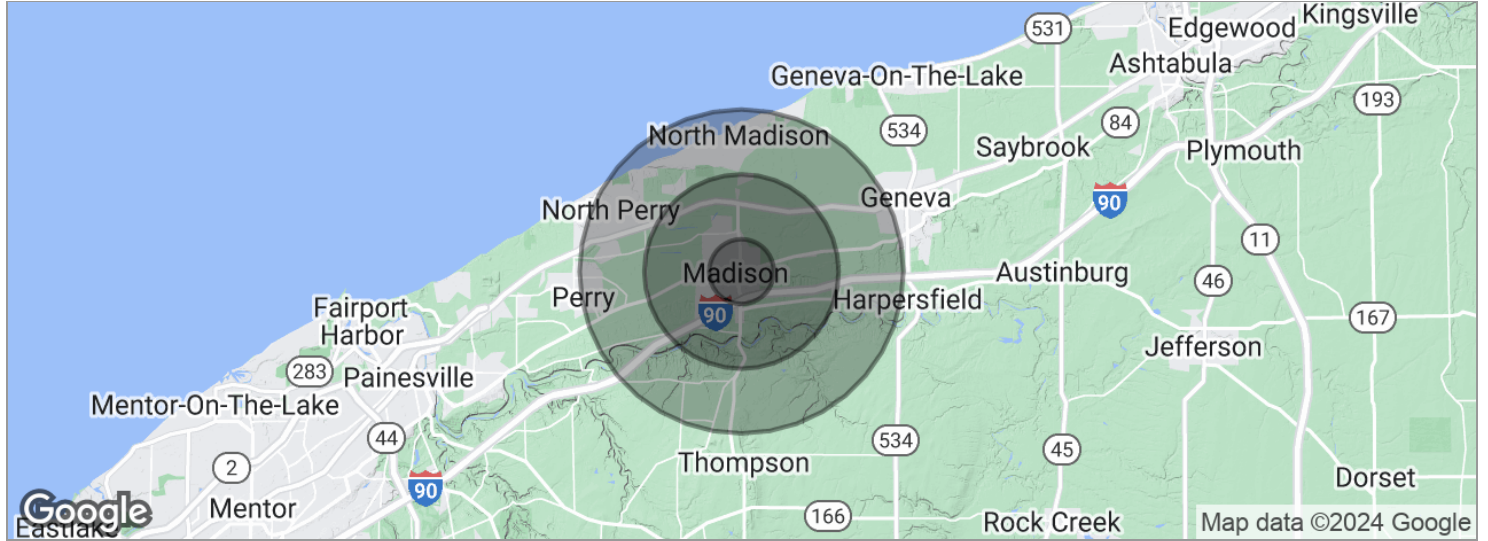
We obtained the information above from sources we believe to be reliable. However, we have not verified its accuracy and make no guarantee, warranty or representation about it. It is submitted subject to the possibility of errors, omissions, change of price, rental or other conditions, prior sale, lease or financing, or withdrawal without notice. We include projections, opinions, assumptions or estimates for example only, and they may not represent current or future performance of the property. You and your tax and legal advisors should conduct your own investigation of the property and transaction.

Each Office Independently Owned and Operated [osbornegroupohio.com](http://osbornegroupohio.com)

# RETAIL FOR LEASE

## RETAIL BUILDING ON HIGHLY VISIBLE CORNER

5 East Main Street, Madison Village , OH 44057



<b>POPULATION</b>	<b>1 MILE</b>	<b>3 MILES</b>	<b>5 MILES</b>
Total population	2,061	7,616	25,190
Median age	42	44	44
Median age (male)	40	42	42
Median age (Female)	43	45	45
<b>HOUSEHOLDS &amp; INCOME</b>	<b>1 MILE</b>	<b>3 MILES</b>	<b>5 MILES</b>
Total households	810	3,062	10,195
# of persons per HH	2.5	2.5	2.5
Average HH income	\$110,801	\$103,797	\$94,177
Average house value	\$232,185	\$230,031	\$223,194

\* Demographic data derived from 2020 ACS - US Census

**KW COMMERCIAL**  
440.255.5500  
7400 Center Street  
Mentor, OH 44060

**RICK OSBORNE JR.**  
Managing Director Of Commercial Real Estate  
O: 440.299.5190  
C: 216.219.0290  
rick.osbornejr@kw.com  
OH #2010001710

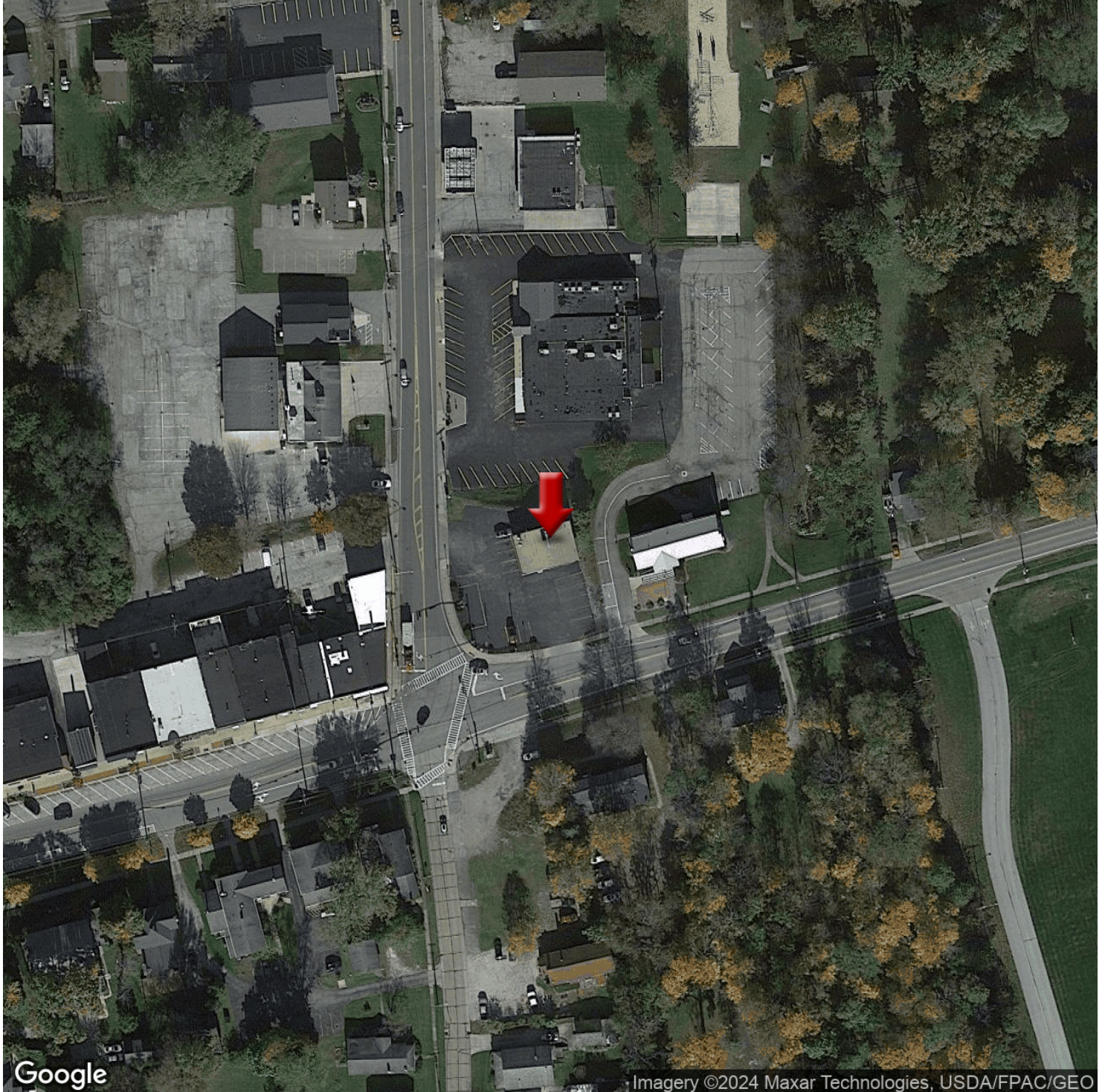
We obtained the information above from sources we believe to be reliable. However, we have not verified its accuracy and make no guarantee, warranty or representation about it. It is submitted subject to the possibility of errors, omissions, change of price, rental or other conditions, prior sale, lease or financing, or withdrawal without notice. We include projections, opinions, assumptions or estimates for example only, and they may not represent current or future performance of the property. You and your tax and legal advisors should conduct your own investigation of the property and transaction.

Each Office Independently Owned and Operated [osbornegroupohio.com](http://osbornegroupohio.com)

## RETAIL FOR LEASE

# RETAIL BUILDING ON HIGHLY VISIBLE CORNER

5 East Main Street, Madison Village , OH 44057



**KW COMMERCIAL**  
440.255.5500  
7400 Center Street  
Mentor, OH 44060

**RICK OSBORNE JR.**  
Managing Director Of Commercial Real Estate  
O: 440.299.5190  
C: 216.219.0290  
rick.osbornejr@kw.com  
OH #2010001710

We obtained the information above from sources we believe to be reliable. However, we have not verified its accuracy and make no guarantee, warranty or representation about it. It is submitted subject to the possibility of errors, omissions, change of price, rental or other conditions, prior sale, lease or financing, or withdrawal without notice. We include projections, opinions, assumptions or estimates for example only, and they may not represent current or future performance of the property. You and your tax and legal advisors should conduct your own investigation of the property and transaction.

Each Office Independently Owned and Operated [osbornegroupohio.com](http://osbornegroupohio.com)

## RETAIL FOR LEASE

# RETAIL BUILDING ON HIGHLY VISIBLE CORNER

5 East Main Street, Madison Village , OH 44057



### **RICK OSBORNE JR.**

**Managing Director of Commercial Real Estate**

rick.osbornejr@kw.com

Direct: 440.299.5190 | Cell: 216.219.0290

OH #2010001710

### **PROFESSIONAL BACKGROUND**

Rick Osborne Jr. has been involved in the management, construction, and sale of commercial properties in Northeast Ohio for over 30 years. During this time he has developed, constructed, and owned nearly 2,500,000 square feet of retail and industrial space in Lake County and throughout Northeast Ohio.

Rick Jr. is an Ohio licensed sales agent and has extensive experience developing, reviewing, and generating multiple lease agreements and purchase agreements as well as securing funding and financing for hundreds of projects and properties.

Rick Jr. formed The Osborne Group as the commercial arm of Keller Williams Greater Cleveland Northeast. Rick is part of KW Commercial and is a leader commercial real estate Northeast Ohio.

### **EDUCATION**

University of Mount Union--Bachelors of Science--1988-1992

Bowling Green State University--Master of Science--Economic Geology--1992-1994

Lakeland Community College-2010--Ohio Sales Person License--Real Estate

### **MEMBERSHIPS**

Rick Jr. is a member of ICSC and an active board member for the Lakeland Foundation, Andrews Osborne Academy, and Mentor Chamber of Commerce. Rick Jr. enjoys hiking, sports, and geology and is a member of Appalachian Trail Conservancy and the Buckeye Trail with logging over 2,000 trail miles to date.

#### **Osborne Group - KW Commercial**

7400 Center Street  
Mentor, OH 44060  
440.255.5500

**KW COMMERCIAL**  
440.255.5500  
7400 Center Street  
Mentor, OH 44060

**RICK OSBORNE JR.**  
Managing Director Of Commercial Real Estate  
O: 440.299.5190  
C: 216.219.0290  
rick.osbornejr@kw.com  
OH #2010001710

We obtained the information above from sources we believe to be reliable. However, we have not verified its accuracy and make no guarantee, warranty or representation about it. It is submitted subject to the possibility of errors, omissions, change of price, rental or other conditions, prior sale, lease or financing, or withdrawal without notice. We include projections, opinions, assumptions or estimates for example only, and they may not represent current or future performance of the property. You and your tax and legal advisors should conduct your own investigation of the property and transaction.

Each Office Independently Owned and Operated [osbournegroupohio.com](http://osbournegroupohio.com)