

FOR LEASE: ±1,721 SF
1061 TIERRA DEL REY, CHULA VISTA, CA 91910



KIMBERLY CHANELLE CLARK, ESQ.
Senior Vice President | 858.458.3343
kclark@voitco.com | Lic. #01439305

Voit
REAL ESTATE SERVICES

THE CLARK TEAM

DEL REY TERRACE OFFICE CONDOS

1061 TIERRA DEL REY, CHULA VISTA, CA 91910

FOR LEASE

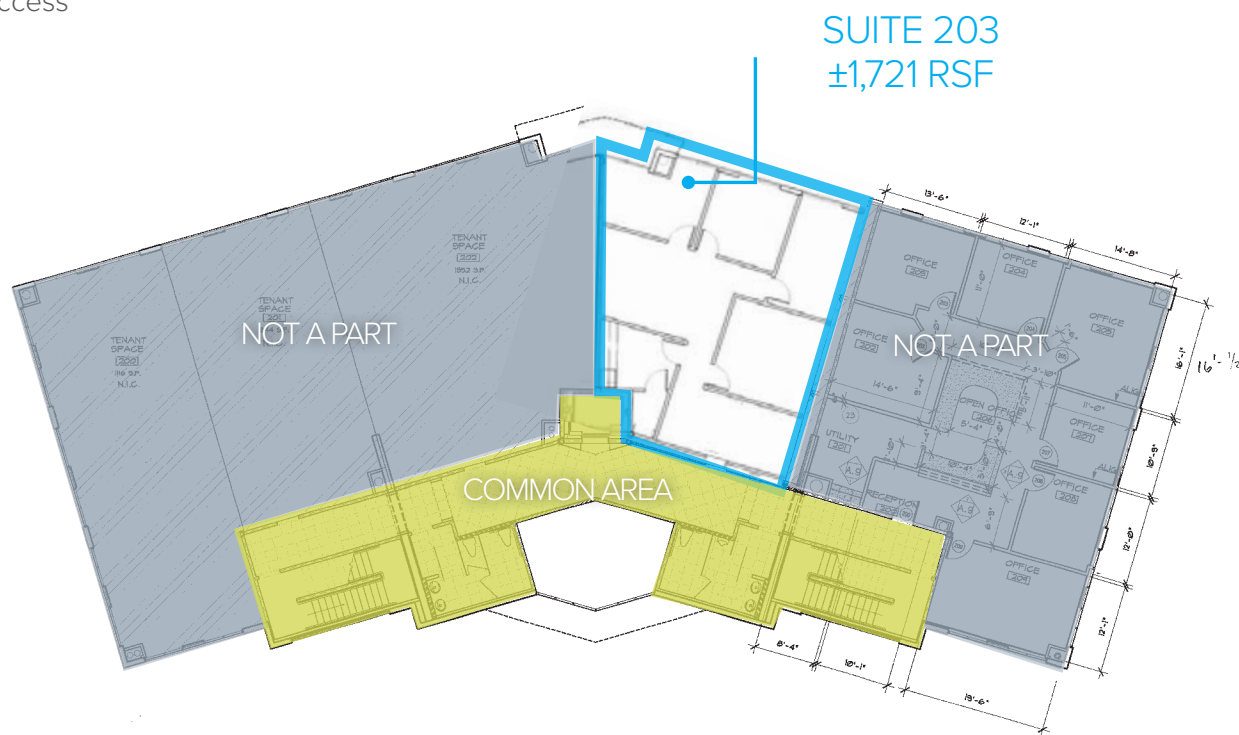
1,721 SF

PROPERTY FEATURES

- » ±1,721 SF available for lease
- » Upscale Rancho Del Rey Area of Chula Vista with easy access to I-805 and Hwy-125
- » Common area conference room
- » Marble flooring in common areas
- » Elevator served
- » Suites with views of Downtown San Diego
- » Restaurants and retail nearby
- » Many amenities and upgrades

PROPERTY AVAILABILITY

SUITE	SIZE (SF)
203	±1,721 SF

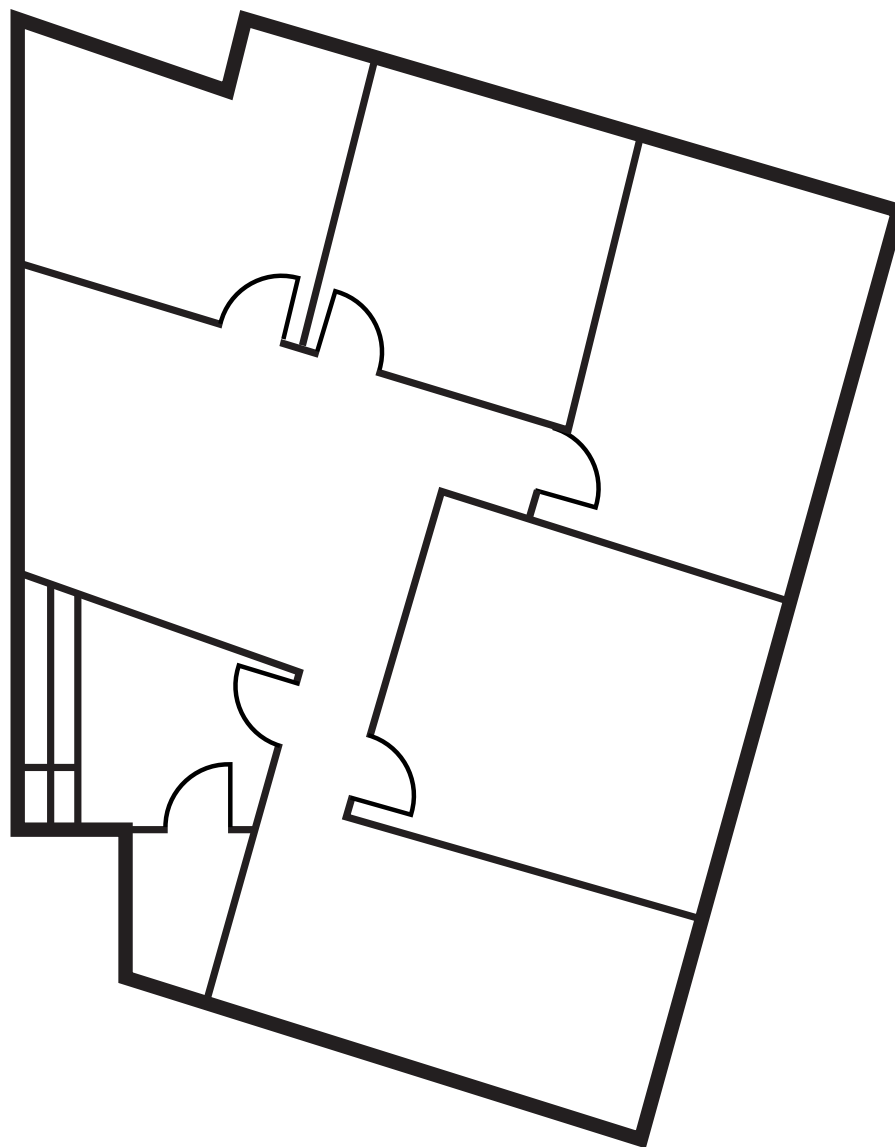


DEL REY TERRACE OFFICE CONDOS

1061 TIERRA DEL REY, CHULA VISTA, CA 91910

FOR LEASE

1,721 SF

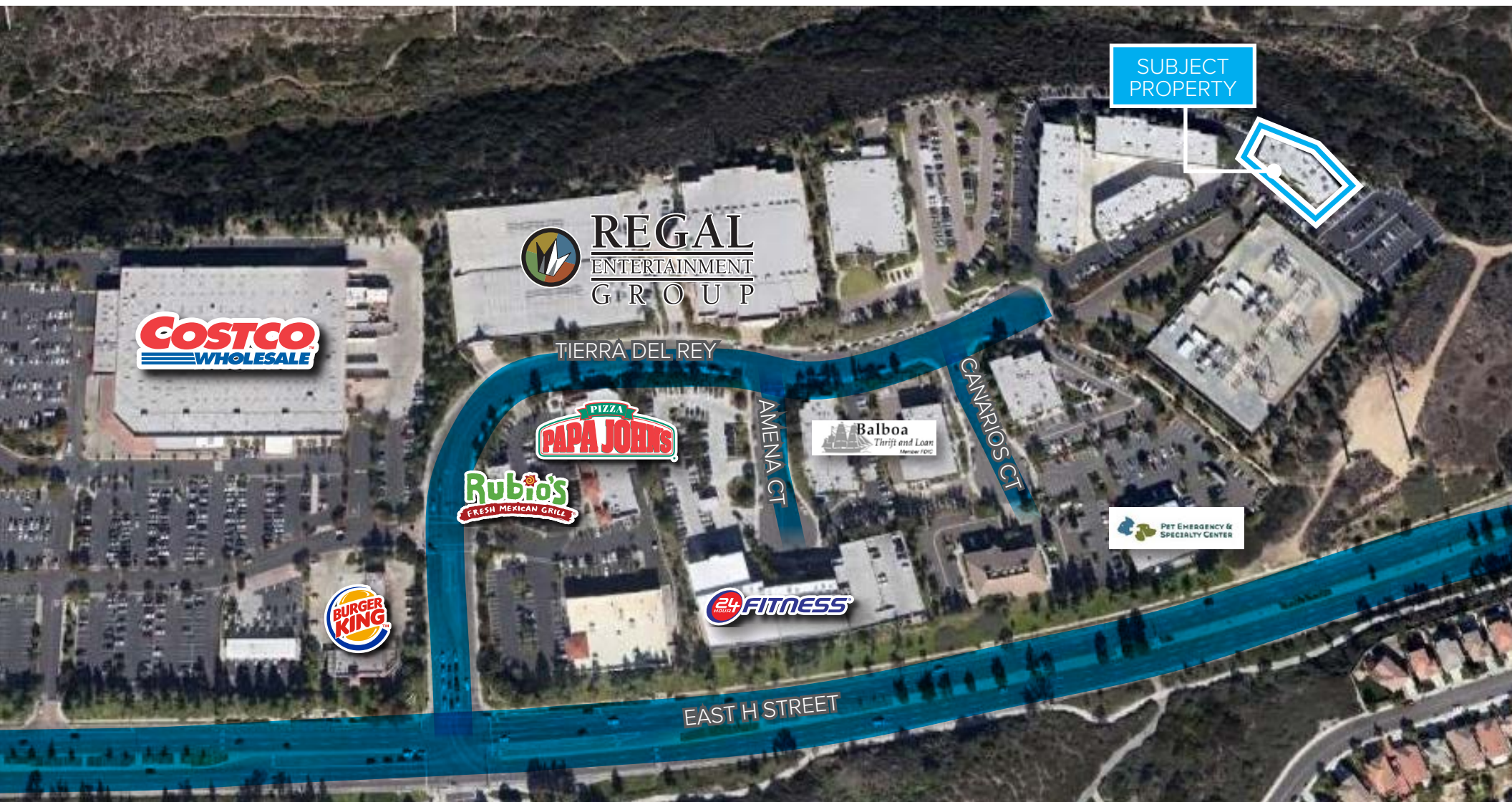


DEL REY TERRACE OFFICE CONDOS

1061 TIERRA DEL REY, CHULA VISTA, CA 91910

FOR LEASE

1,721 SF



KIMBERLY CHANELLE CLARK, ESQ.
Senior Vice President, Partner | 858.458.3343
kclark@voitco.com | Lic. #01439305

4180 La Jolla Village Drive, Suite 100, La Jolla, CA 92037 • 858.453.0505 • 858.408.3976 Fax • Lic #01991785 | www.voitco.com

Licensed as a Real Estate Broker and a Salesperson by the DRE. The information contained herein has been obtained from sources we deem reliable. While we have no reason to doubt its accuracy, we do not guarantee it. ©2026 Voit Real Estate Services, Inc. All Rights Reserved. Real People. Real Solutions.® is a registered trademark of Voit Real Estate Services.

Voit
REAL ESTATE SERVICES

