

LEASE > COMMERCIAL/INDUSTRIAL BUILDING



±1,156 - 4,910 Square Feet

9800-9810 RUSH STREET, SOUTH EL MONTE, CA 91733



Property Features

- ±1,156 SF (Unit C) - Frontage Unit on Rush Street
- ±2,466 SF (Unit D)
 - One private office with one general open area (±507 SF)
 - 1 Ground Loading Door
 - 17' Minimum Ceiling Clearance
- Corner Location of Rush Street & Potrero Avenue
- Direct Access to Pomona (60) Freeway via Rosemead Boulevard

Address	Total (SF)	Status
9800 Rush St. #A & B	2,811	Leased
9800 Rush St. #C	1,156	Available
9800 Rush St. #D	2,466	Available
9800 Rush St. #E & F	4,910	Leased
9808 Rush St.	3,500	Leased
9810 Rush St. #A	1,156	Leased
9810 Rush St. #B	1,156	Leased
9810 Rush St. #C	2,489	Leased

TONY T. PHU
Senior Executive Vice President
626.407.2586
tony.phu@colliers.com
License No. 01129178

COLLIERS INTERNATIONAL
17800 Castleton Street
Suite 495
City of Industry, CA 91748

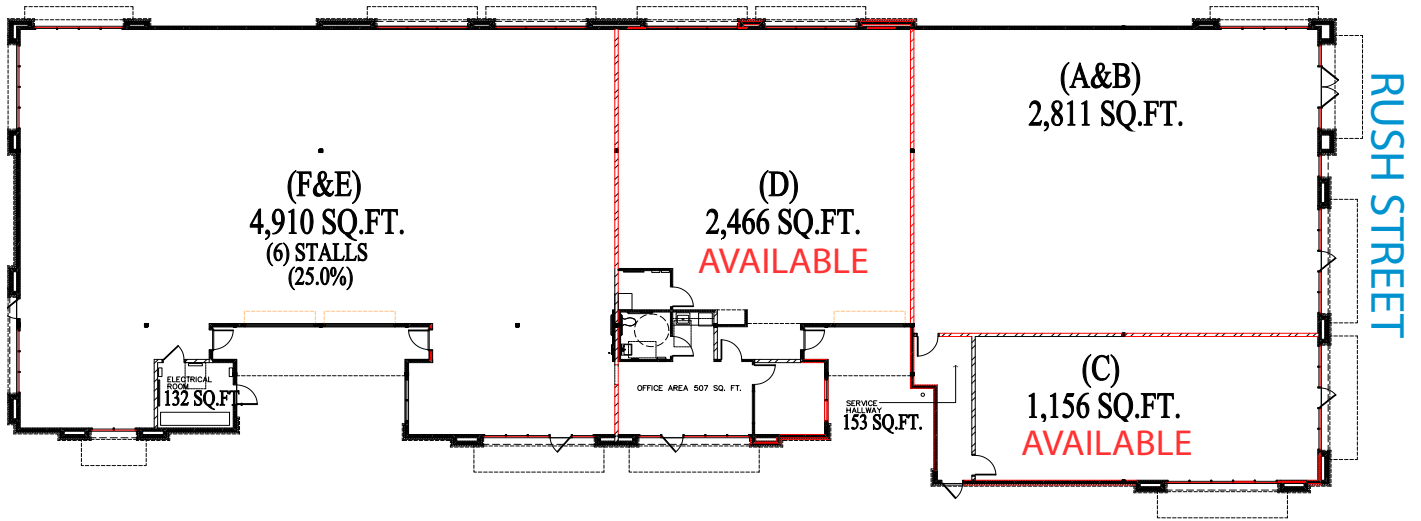
LEASE > COMMERCIAL/INDUSTRIAL BUILDING



±1,156 - 4,910 Square Feet

9800-9810 RUSH STREET, SOUTH EL MONTE, CA 91733

POTRERO AVENUE



UNIT C

UNIT D



TONY T. PHU
Senior Executive Vice President
626.407.2586
tony.phu@colliers.com
License No. 01129178

COLLIERS INTERNATIONAL
17800 Castleton Street
Suite 495
City of Industry, CA 91748