



## ONE OVERLOOK POINT Lincolnshire Corporate Center

### SIZE:

Building: 206,626 Sq. Ft.  
Height: 6 Stories

### Monthly rent includes:

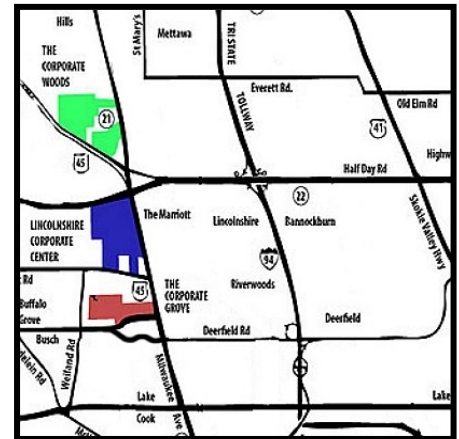
Electric and Internet  
4 hours per month of shared Conference Room

Suite 110 \$995 per mo gross Single Office  
Suite 250 \$795 per mo gross Single Office  
Suite 257 \$895 per mo gross Single Office  
Suite 258 \$895 per mo gross Single Office  
Suite 259 \$995 per mo gross Single Office  
Suite 260 \$1,295 per mo gross Single Office

Suite 528 \$2,500 per mo gross 2 Private Offices w/ Open Area  
Suite 665 \$2,500 per mo gross 1 Private Office w/ Open Area  
Suite 671 \$895 per mo gross Single Office  
Suite 678 \$2,650 per mo gross 2 Private Offices w/ Open Area

### HIGHLIGHTS:

- Overlook Point Deli
- Wi-Fi Lounge / Game Room
- Lakeside Patio and Fire Pit
- Fitness Center
- Conference Center
- Shared Breakroom
- Outdoor Amphitheater and Miles of Walking / Jogging Paths
- Bike Room with Tools and Storage
- Walk to Public Transit Connections
- Dual Power Feed with Automatic Transfer Switch Insures a Consistent Power Supply
- Two Individual HVAC Units per Floor to Accommodate Cost Efficient After Hours Operations
- Responsive On-Site Ownership and Management



### Exclusive Leasing and Management Agents



#### VAN VLISSINGEN AND CO.

One Overlook Point  
Lincolnshire Corporate Center  
Lincolnshire, Illinois 60069

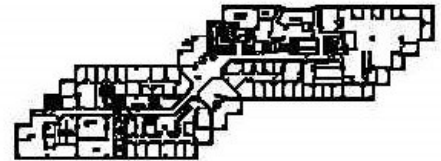
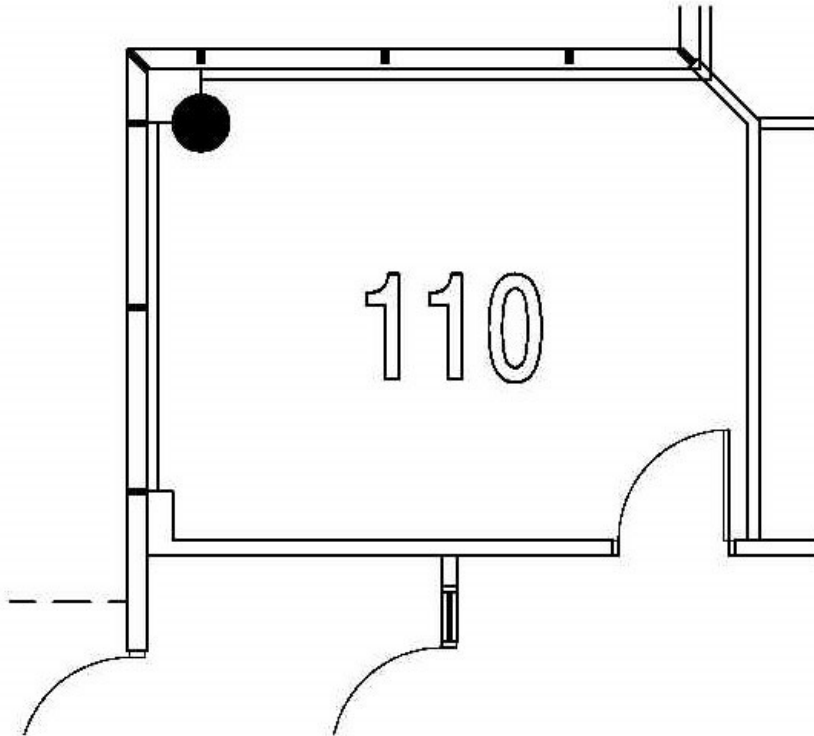
**847.634.2300**

Chuck Lamphere, President  
[cl@vvco.com](mailto:cl@vvco.com)

Gordon Lamphere, VP  
[gcl@vvco.com](mailto:gcl@vvco.com)

Nick Panarese, Executive VP, SIOR  
[ndp@vvco.com](mailto:ndp@vvco.com)

**Suite 110**  
**252 Sq. Ft.**  
**ONE OVERLOOK POINT**  
Lincolnshire Corporate Center



KEY PLAN

**Exclusive Leasing and Management Agents**



**VAN VLISSINGEN AND CO.**

One Overlook Point  
Lincolnshire Corporate Center  
Lincolnshire, Illinois 60069

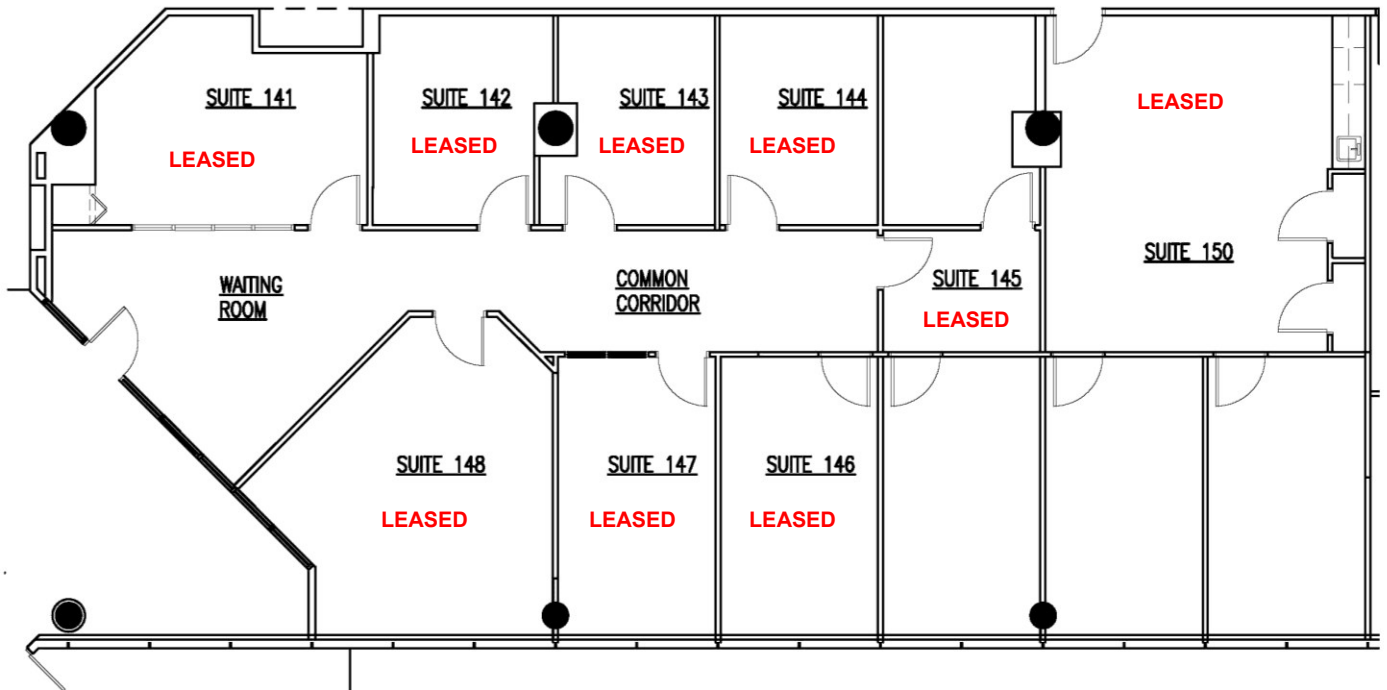
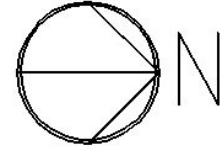
**847.634.2300**

Chuck Lamphere, President  
[crl@vvco.com](mailto:crl@vvco.com)

Gordon Lamphere, VP  
[gcl@vvco.com](mailto:gcl@vvco.com)

Nick Panarese, Executive VP, SIOR  
[ndp@vvco.com](mailto:ndp@vvco.com)

**SUITES 141-150**  
**ONE OVERLOOK POINT**  
Lincolnshire Corporate Center



**Exclusive Leasing and Management Agents**



**VAN VLISSINGEN AND CO.**

One Overlook Point  
Lincolnshire Corporate Center  
Lincolnshire, Illinois 60069

**847.634.2300**

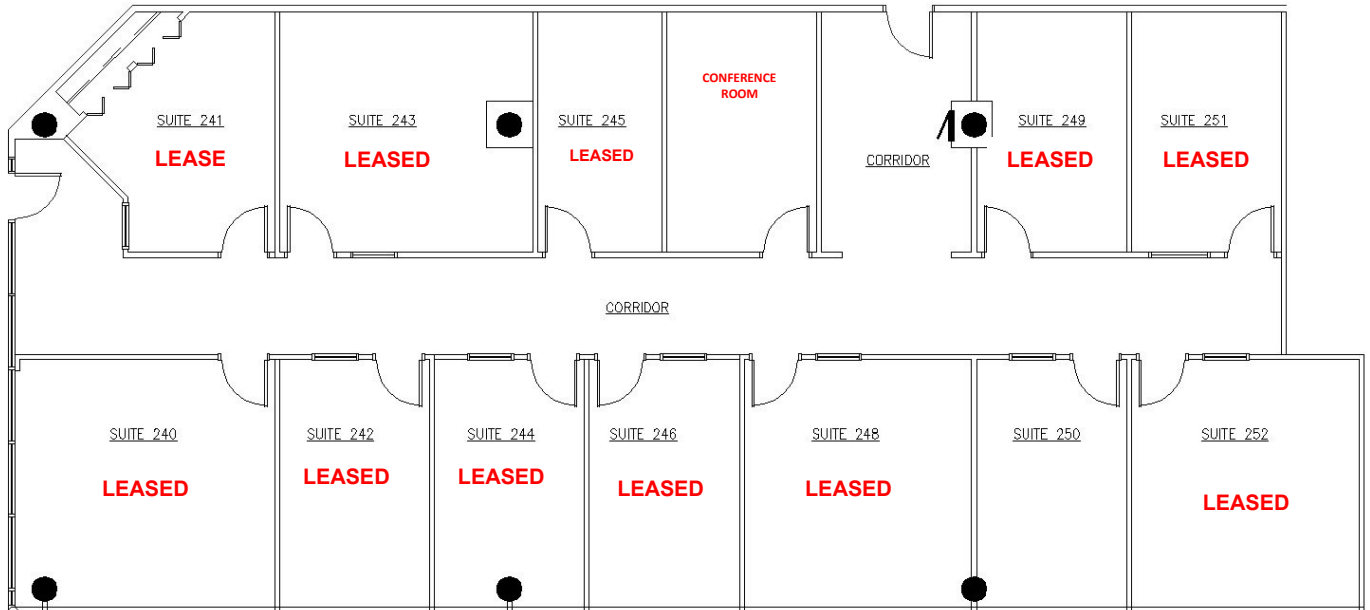
**Chuck Lamphere, President**  
[curl@vvco.com](mailto:curl@vvco.com)

**Gordon Lamphere, VP**  
[gcl@vvco.com](mailto:gcl@vvco.com)

**Nick Panarese, Executive VP, SIOR**  
[ndp@vvco.com](mailto:ndp@vvco.com)

*Above information is subject to verification and no liability for errors or omissions is assumed. Price is subject to change and listing withdrawn without notice. Members of this firm have an ownership interest in this property. © Copyright 2025 All Rights Reserved*

**SUITES 240-252**  
**ONE OVERLOOK POINT**  
Lincolnshire Corporate Center



**Exclusive Leasing and Management Agents**

 **VAN VLISSINGEN AND CO.**

One Overlook Point  
Lincolnshire Corporate Center  
Lincolnshire, Illinois 60069

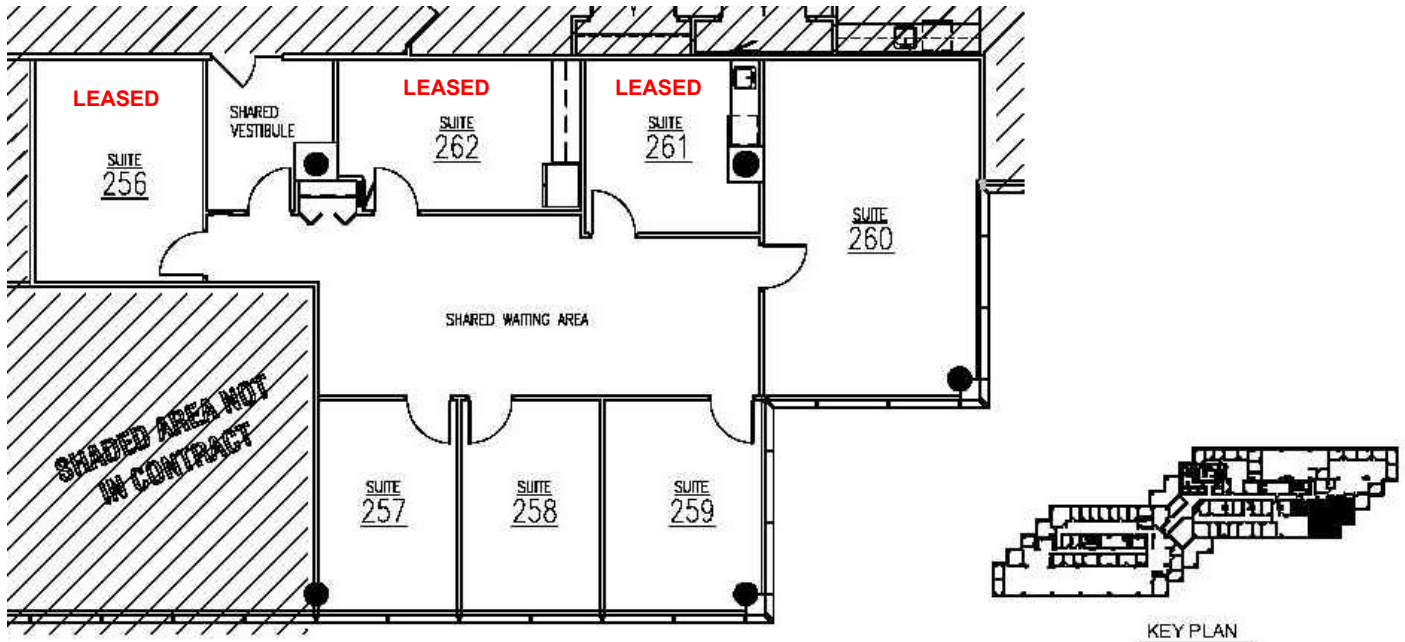
**847.634.2300**

**Chuck Lamphere, President**  
[crl@vvco.com](mailto:crl@vvco.com)

**Gordon Lamphere, VP**  
[gcl@vvco.com](mailto:gcl@vvco.com)

**Nick Panarese, Executive VP, SIOR**  
[ndp@vvco.com](mailto:ndp@vvco.com)

**SUITES 256-262**  
**ONE OVERLOOK POINT**  
Lincolnshire Corporate Center



**Exclusive Leasing and Management Agents**



**VAN VLISSINGEN AND CO.**

One Overlook Point  
Lincolnshire Corporate Center  
Lincolnshire, Illinois 60069

**847.634.2300**

**Chuck Lamphere, President**  
[crl@vvco.com](mailto:crl@vvco.com)

**Gordon Lamphere, VP**  
[gcl@vvco.com](mailto:gcl@vvco.com)

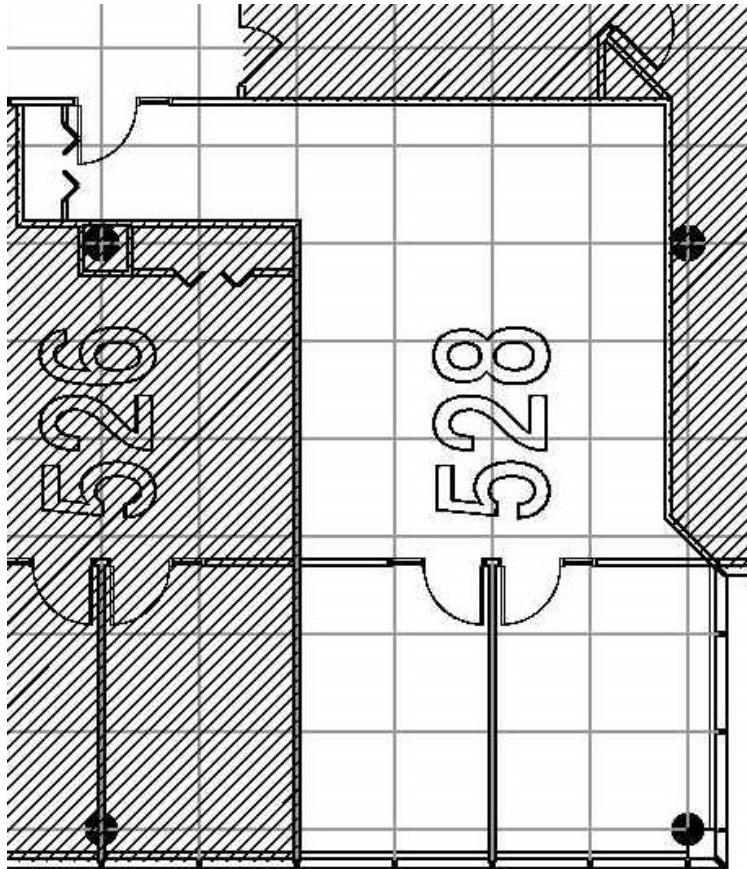
**Nick Panarese, Executive VP, SIOR**  
[ndp@vvco.com](mailto:ndp@vvco.com)

*Above information is subject to verification and no liability for errors or omissions is assumed. Price is subject to change and listing withdrawn without notice. Members of this firm have an ownership interest in this property. © Copyright 2025 All Rights Reserved*

**SUITES 528**

**ONE OVERLOOK POINT**

Lincolnshire Corporate Center



**Exclusive Leasing and Management Agents**



One Overlook Point  
Lincolnshire Corporate Center  
Lincolnshire, Illinois 60069

**847.634.2300**

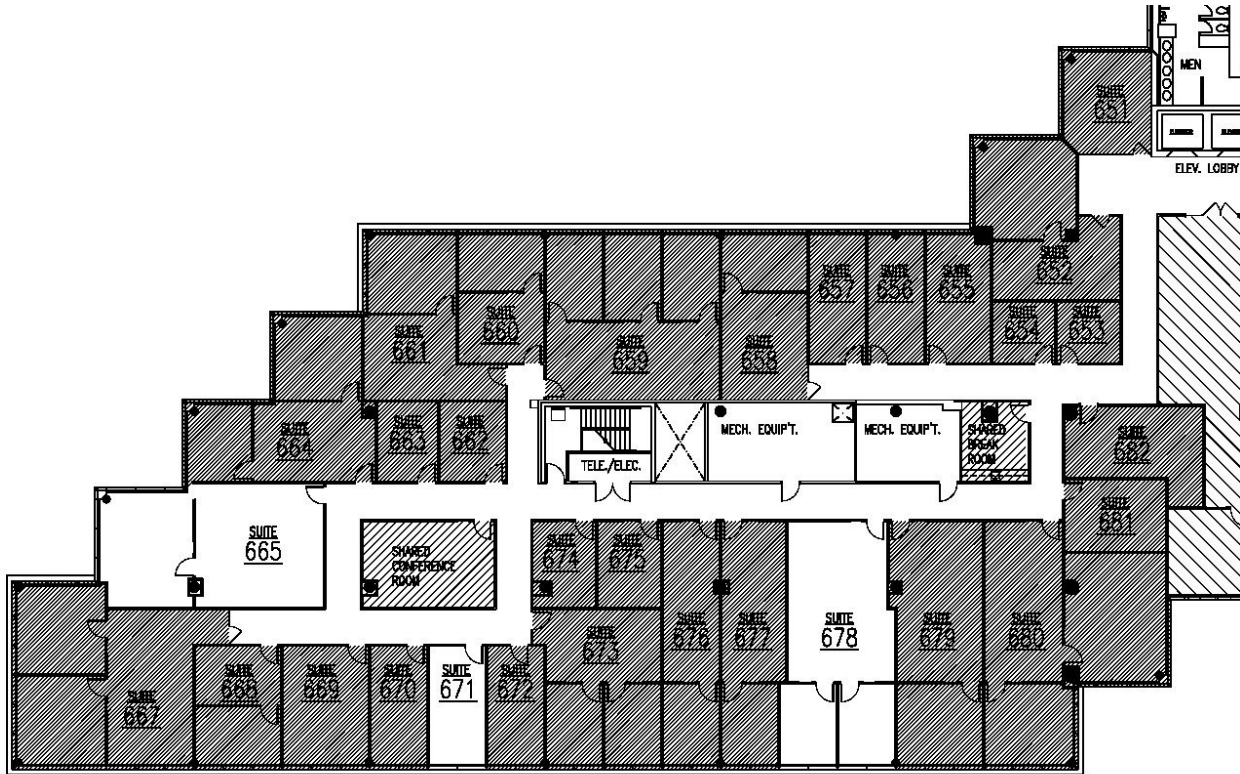
**Chuck Lamphere, President**  
[crl@vvco.com](mailto:crl@vvco.com)

**Gordon Lamphere, VP**  
[gcl@vvco.com](mailto:gcl@vvco.com)

**Nick Panarese, Executive VP, SIOR**  
[ndp@vvco.com](mailto:ndp@vvco.com)

*Above information is subject to verification and no liability for errors or omissions is assumed. Price is subject to change and listing withdrawn without notice. Members of this firm have an ownership interest in this property. © Copyright 2025 All Rights Reserved*

**SUITES 651-682**  
**ONE OVERLOOK POINT**  
**NEW SMALL SUITES**  
Lincolnshire Corporate Center



**Exclusive Leasing and Management Agents**

 **VAN VLISSINGEN AND CO.**  
One Overlook Point  
Lincolnshire Corporate Center  
Lincolnshire, Illinois 60069  
**847.634.2300**

Chuck Lamphere, President  
[cr1@vvco.com](mailto:cr1@vvco.com)

Nick Panarese, Executive VP, SIOR  
[ndp@vvco.com](mailto:ndp@vvco.com)

Gordon Lamphere, VP  
[gcl@vvco.com](mailto:gcl@vvco.com)

*Above information is subject to verification and no liability for errors or omissions is assumed. Price is subject to change and listing withdrawn without notice. Members of this firm have an ownership interest in this property. © Copyright 2025 All Rights Reserved*