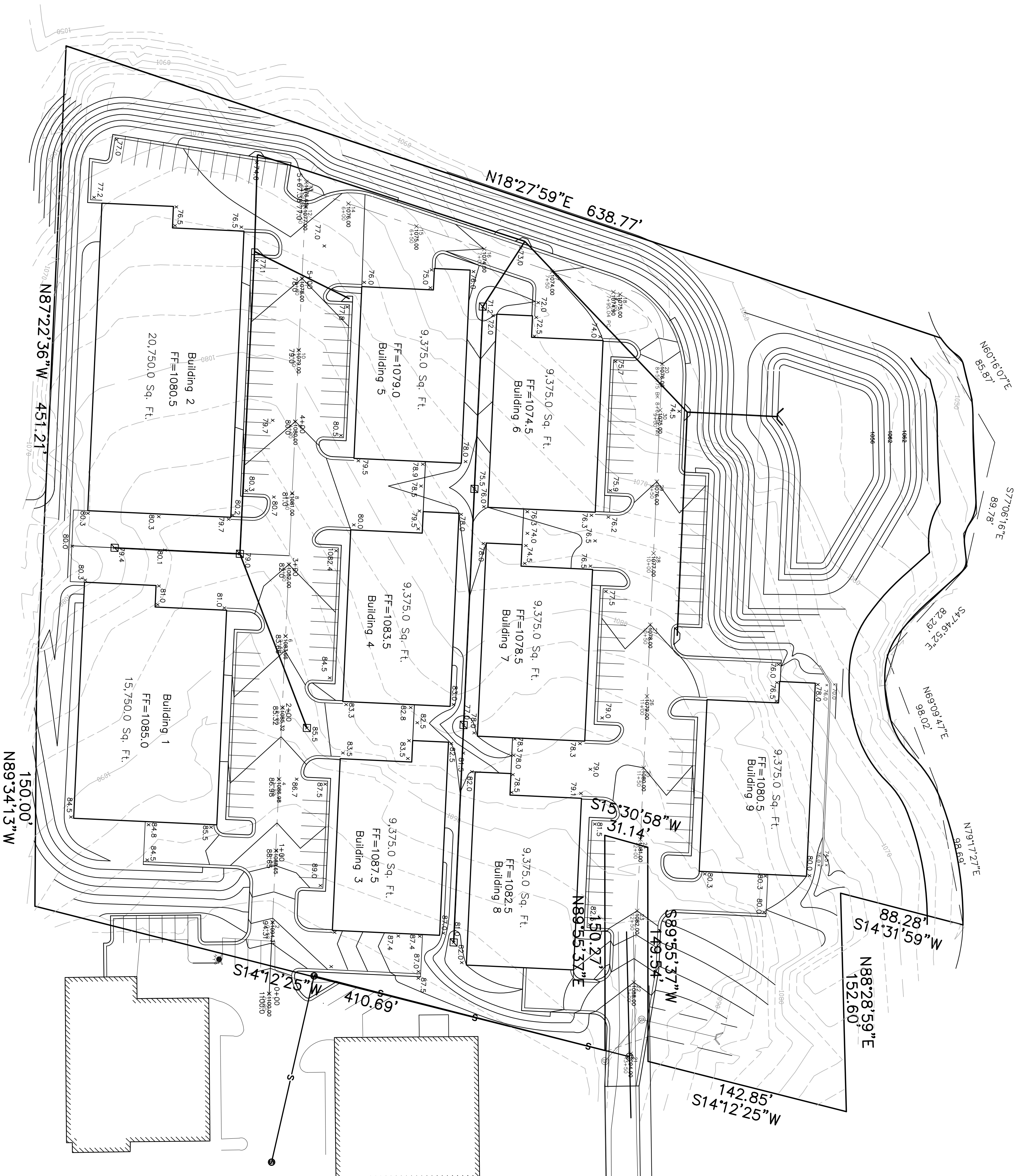
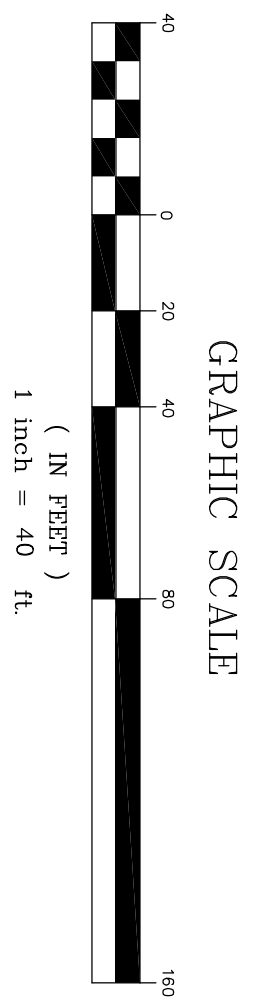
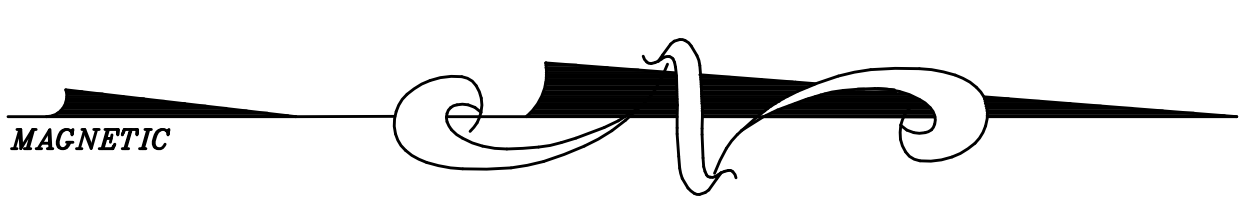


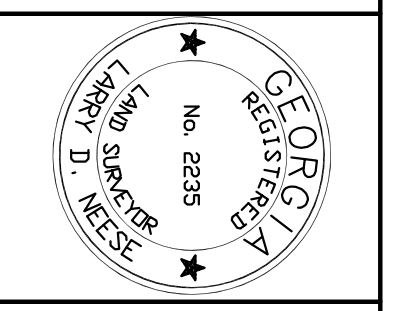
Location Map



Total Buildings 102,125.0 Sq. Ft.



REVISIONS:



Larry D. Neese, PLS
 ENGINEERS PLANNERS SURVEYORS
 194 Cadence Trail
 Canton, Georgia 30115
 (770) 428-2122
 E-Mail: lneese2335@aol.com

Site Development Plan
Phase Two
 Land Lot 283
 17th District
 Cobb County Georgia
 Field Date: Jan-Feb, 2016
 Plan Date: May 18, 2016
 Scale: 1"=40'

SHEET