

FREESTANDING 1929 GEM AVAILABLE FOR LEASE DOWNTOWN ASHEVILLE
5 RAVENSCROFT DRIVE ASHEVILLE, NORTH CAROLINA 28801



\$10,000/MO | APPROX. 8,000 SF | BUILT IN 1929 | OFFICE OR HOSPITALITY USE



Designed by William East for Odd Fellows Lodge & on the National Historic Register, this special property has a beautiful brick façade, terracotta trim, solid wood doors, original fixtures and ornate windows. Currently set up as a multi-tenant office with potential for hospitality conversion. Rooftop has magnificent mountain and city views that brings incredible potential.

Double wooden doors with transoms and an impressive lobby with pink marble floors. Balcony staircase, 16' ceilings in expansive upstairs space. Modern upgrades include new elevator, electrical, central HVAC. Four onsite surface parking spaces, plus free public street parking, adjacent pay lots, and near-by garage. Owner contributions available for right tenant and terms. Triple net lease.

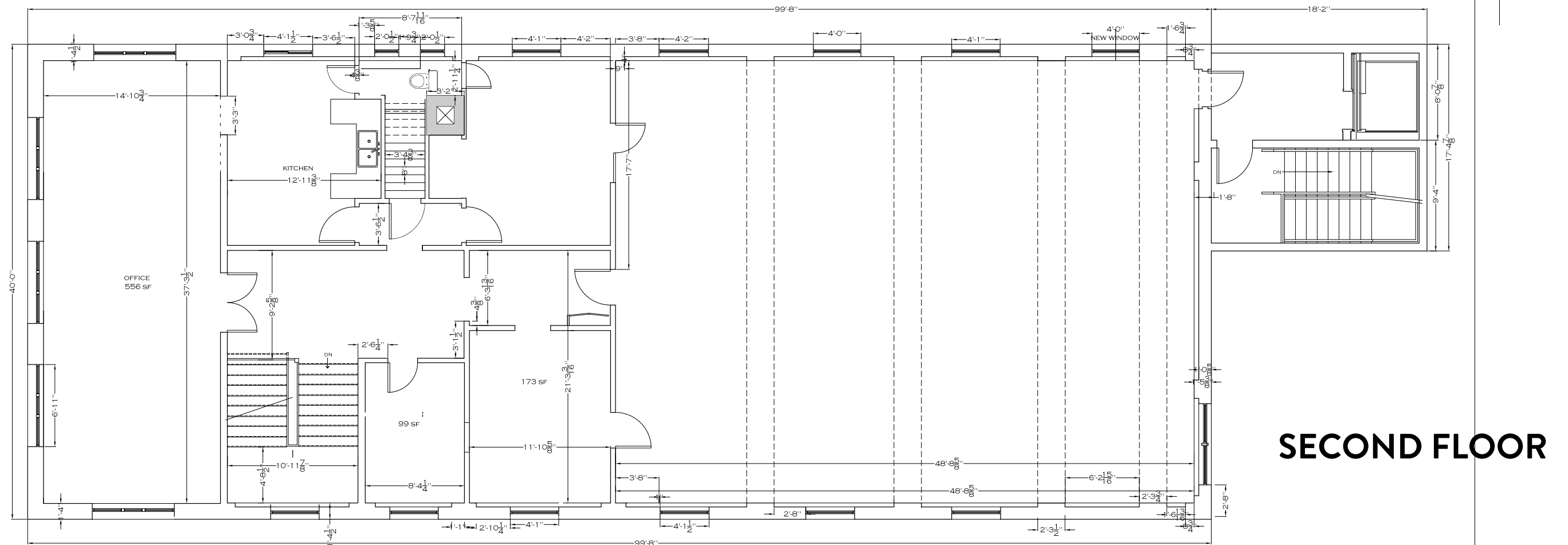
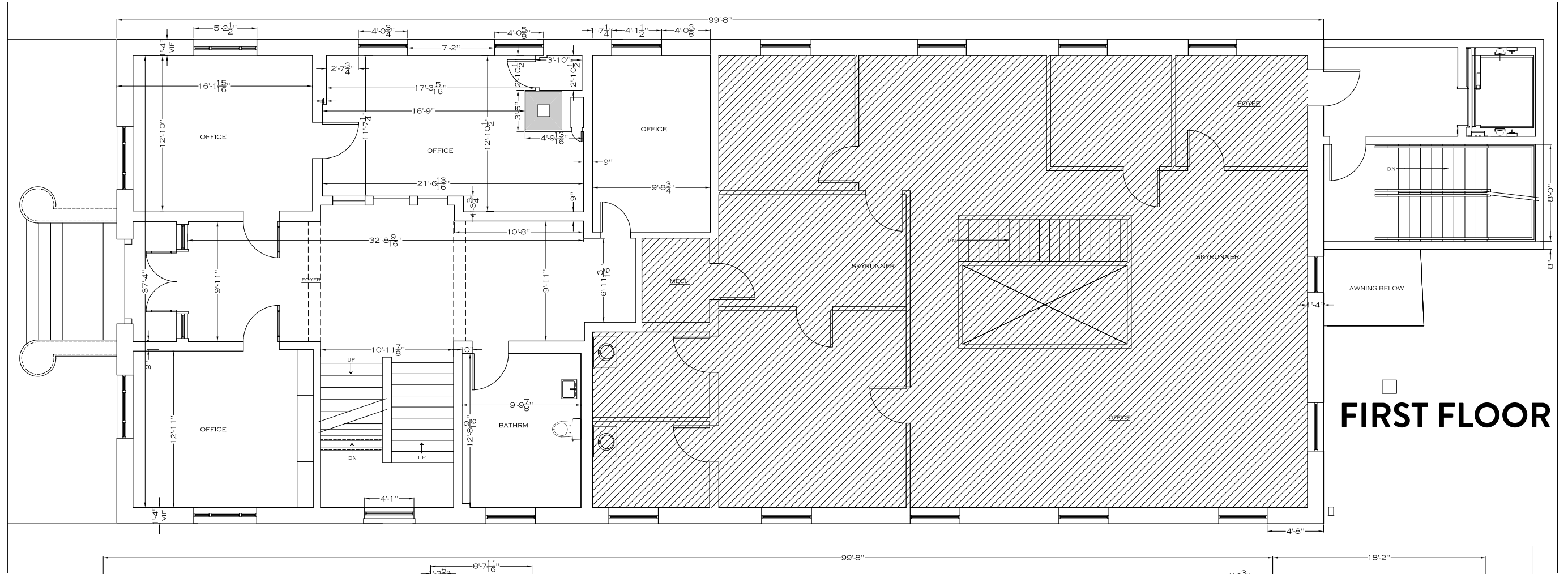
BURNS ALDRIDGE | HURLEY & ASSOCIATES REAL ESTATE
828.231.4894 BURNSALDRIDGE@GMAIL.COM



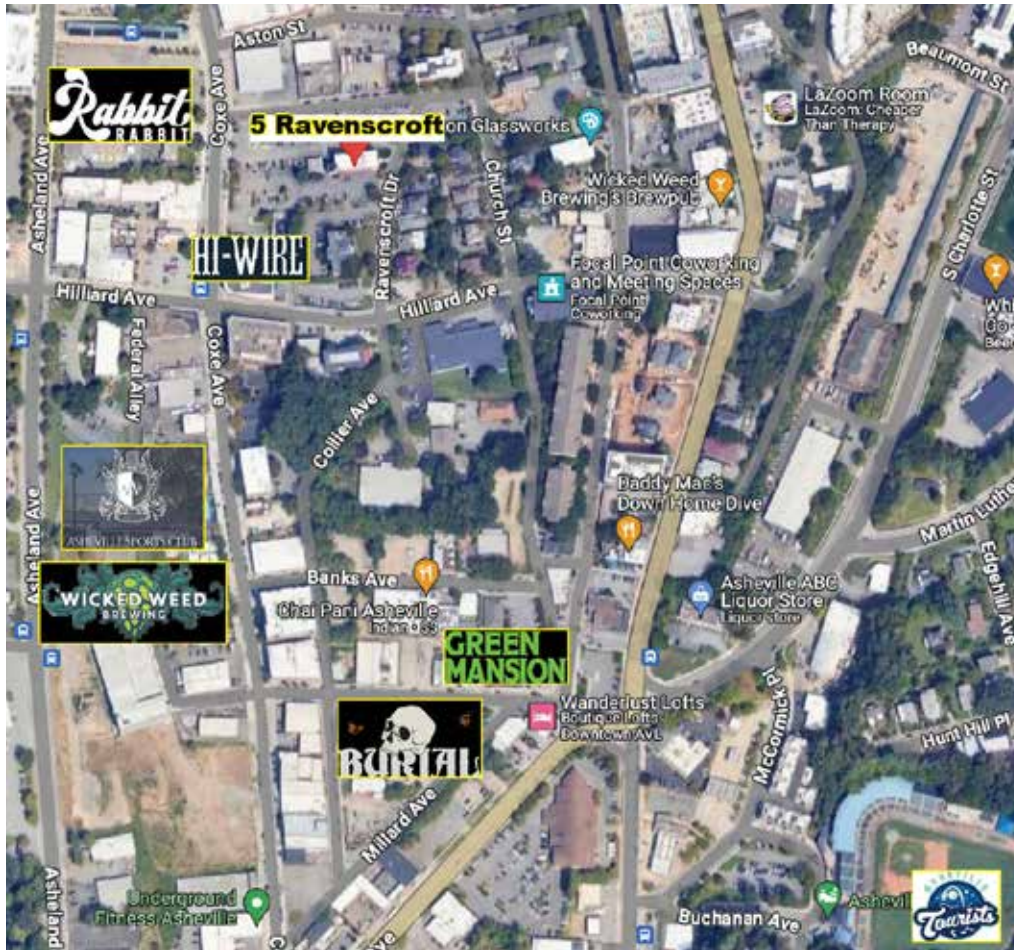
BURNS ALDRIDGE | HURLEY & ASSOCIATES REAL ESTATE
828.231.4894 BURNSALDRIDGE@GMAIL.COM

5 RAVENSCROFT DRIVE
ASHEVILLE, NC 28801

5 RAVENSCROFT DRIVE FLOORPLANS



5 RAVENSCROFT DRIVE INCREDIBLE DOWNTOWN ASHEVILLE LOCATION



5 Ravenscroft Drive is ideally located in walking distance to downtown Asheville & the South Slope Brewery District with some of Asheville's best restaurants, breweries, & retail. Tucked away on a side street, it is as close to everything you want it to be but in a quieter spot.

Walking Distance to:

- Rabbit Rabbit concerts - 3 minutes
- Hi-Wire Brewing - 4 minutes
- Ben's Tune Up - 4 minutes
- Asheville Sports Club - 4 minutes
- Wicked Weed - 5 minutes
- Green Man Brewery - 6 minutes



- Burial Beer - 6 minutes
- Asheville Tourists Baseball Stadium - 12 minutes
- Chai Pani - 5 minutes
- Catawba Brewing - 5 minutes
- USPS - 5 minutes

