

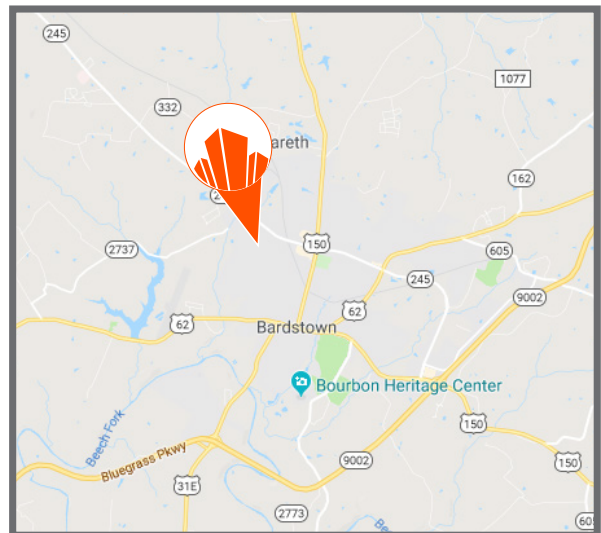


**919-935 Chambers Blvd**  
Bardstovwn, KY 40004

## FOR LEASE MEDICAL OFFICE SUITES **1,100 - 1,650 SF ±**

**LEASE RATE:** \$11-13 SF Modified Gross

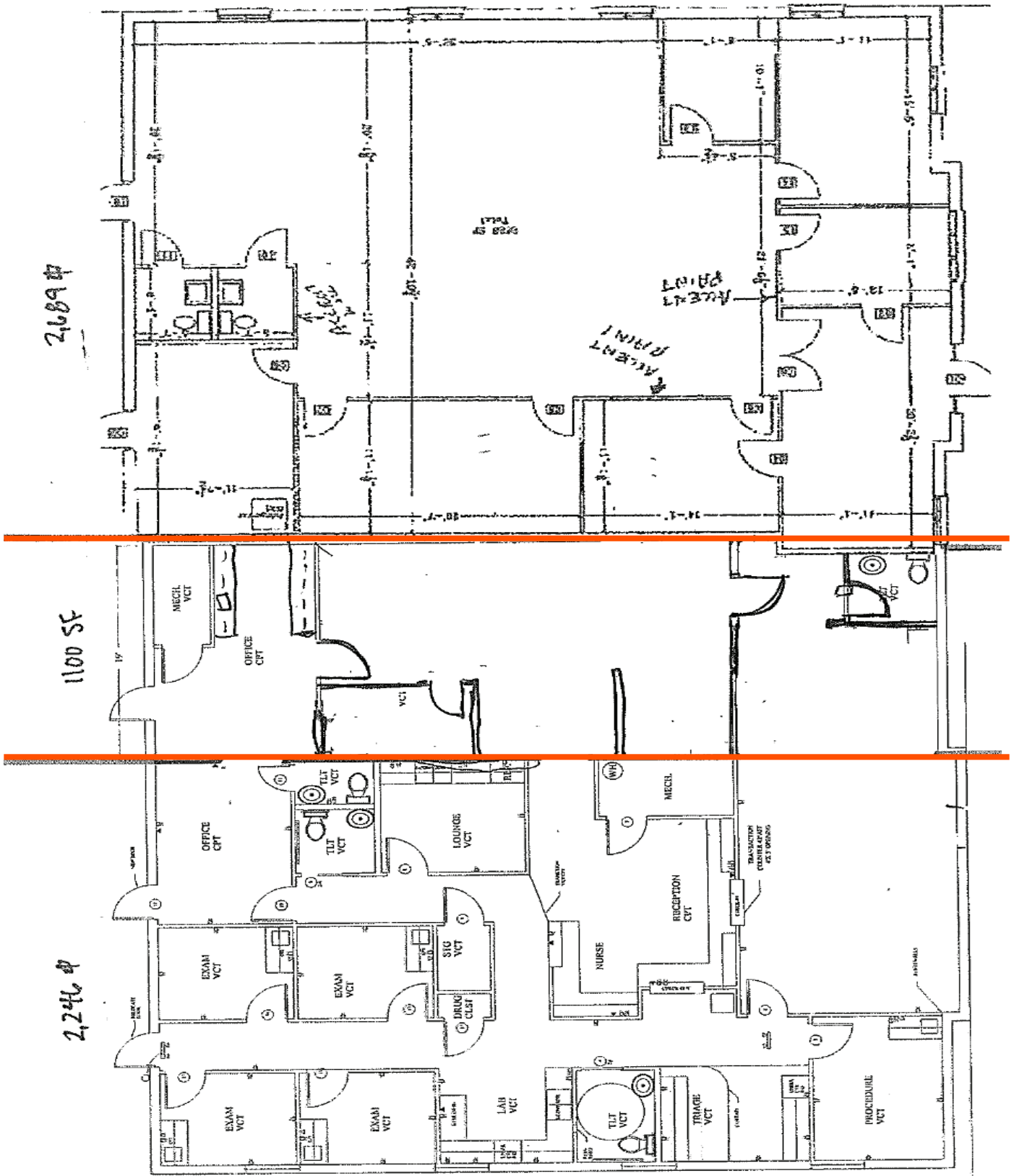
- Building 935: 1,100 SF  
-Space contains general office
- Building 919: 1,650 SF  
- Space includes waiting room, receptions, two exam rooms, one procedure room, two offices, and four restrooms
- Located on Chambers Blvd, just off John Rowan Blvd in one of Bardstovwn's medical / office corridors
- Functional layout for medical or office users



**Seth Edens**  
502.454.5611  
sedens@triocpg.com



935- SUITE 100



919- SUITE 200

