

AVAILABLE FOR LEASE



BUILDING SPECIFICATIONS

Total Square Footage:	16,951
Available Square Feet:	8,500 SF
Clear Ceiling Height:	15'
Parking:	3/1,000
Power:	400 amp service
Sprinkler System:	Wet
Construction:	Masonry & Steel
Column Spacing	28' X 44'

PROPERTY HIGHLIGHTS

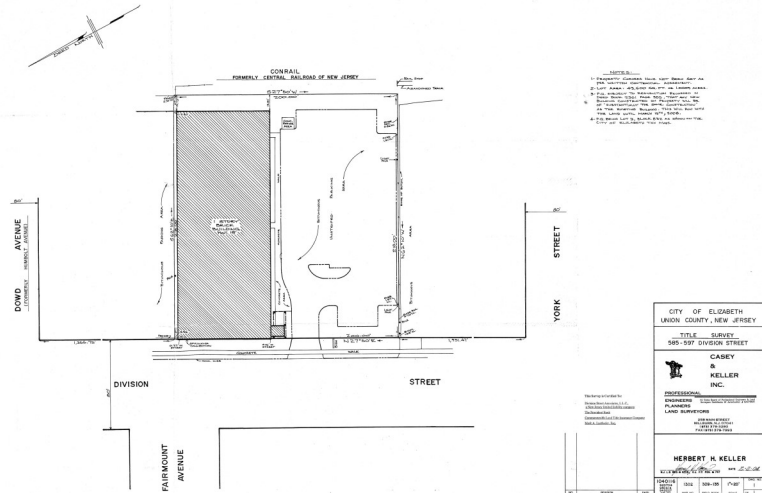
- ◆ **Urban Enterprise Zone**

ACCESSIBILITY

- ◆ **Routes 1 & 9 - approx. 1/2 a mile**
- ◆ **Newark Liberty Int'l Airport - approx. 1 mile**
- ◆ **Port Elizabeth/Newark - 2 miles**
- ◆ **I-95/NJ Turnpike Exit 13A - 2 miles**
- ◆ **I-78 - approx. 3 miles**
- ◆ **I-95/NJ Turnpike Exit 14 - 4 miles**
- **Access to Public Transportation (NJ Transit Bus #62 & #112)**

For more information please contact:
Terry Armstrong | Broker of Record
Portview Realty Services, LLC
(o) 908.272.7555 (c) 201.446.3613
terry@portviewrealty.com
Licensed Real Estate Broker

FLOOR PLAN & SURVEY



AERIAL



For more information please contact:
Terry Armstrong | Broker of Record
Portview Realty Services, LLC
(o) 908.272.7555 (c) 201.446.3613
terry@portviewrealty.com
Licensed Real Estate Broker