



## OFFERING SUMMARY

<b>Lease Rate:</b>	\$20.00 SF/yr
<b>Available SF:</b>	963 SF
<b>Lot Size:</b>	0.69 Acres
<b>Lease Type:</b>	Full Service
<b>Parking:</b>	2/1,000 SF
<b>Zoning:</b>	CG
<b>Ceiling Height:</b>	20'

## PROPERTY OVERVIEW

Previous dentist space with ideal layout with reception, room for 4 dental chairs, private restroom and private office. The building also offers a shared kitchenette and the second floor space is elevator served.

## LOCATION OVERVIEW

Ideal medical building located conveniently off Multnomah Blvd. Access immediately off Barbur Blvd. Directly located off of I-5.

## PROPERTY HIGHLIGHTS

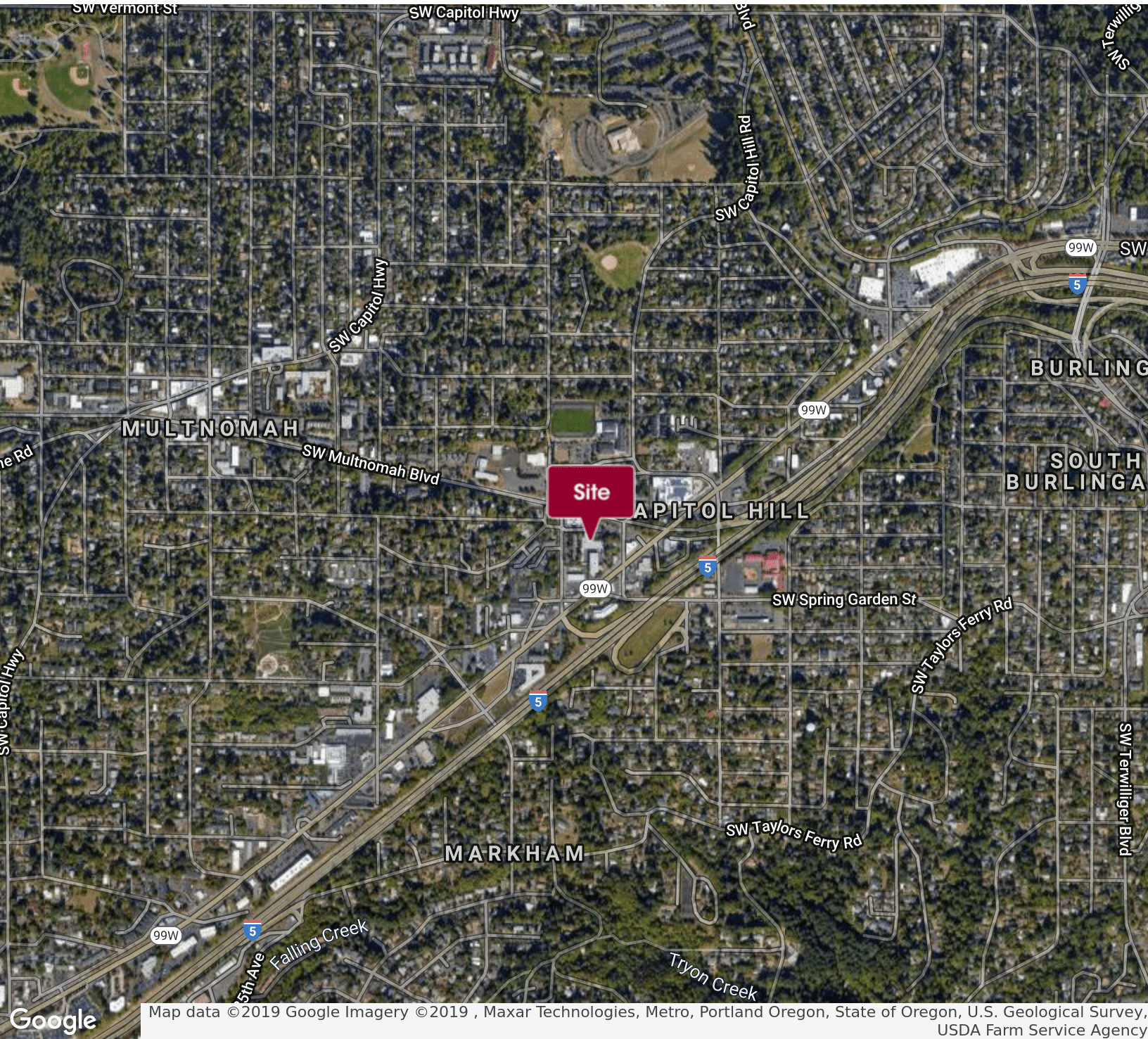
- Suite is elevator served
- 4 stations within suite plumbed and with sinks
- Ensuite restroom and storage
- Common area kitchen adjacent to suite
- Ample on-site parking
- Monument signage possible



**Megan McElmurry**  
503.972.7274  
megan@macadamforbes.com  
Licensed in OR

FOR LEASE

2350 SW Multnomah Blvd Portland, OR 97219



**Megan McElmurry**  
503.972.7274  
megan@macadamforbes.com  
Licensed in OR

All of the information contained herein was obtained either from the owner or other parties we consider reliable. We have no reason to doubt its accuracy, however we do not guarantee it.

MACADAMFORBES.COM | 503.227.2500