

FOR LEASE



NEW MIXED-USE DEVELOPMENT

408 LASKIN ROAD
VIRGINIA BEACH, VA 23451

FOR MORE INFORMATION, PLEASE CONTACT:

MARTIN MURDEN
SENIOR ASSOCIATE
757.640.2265

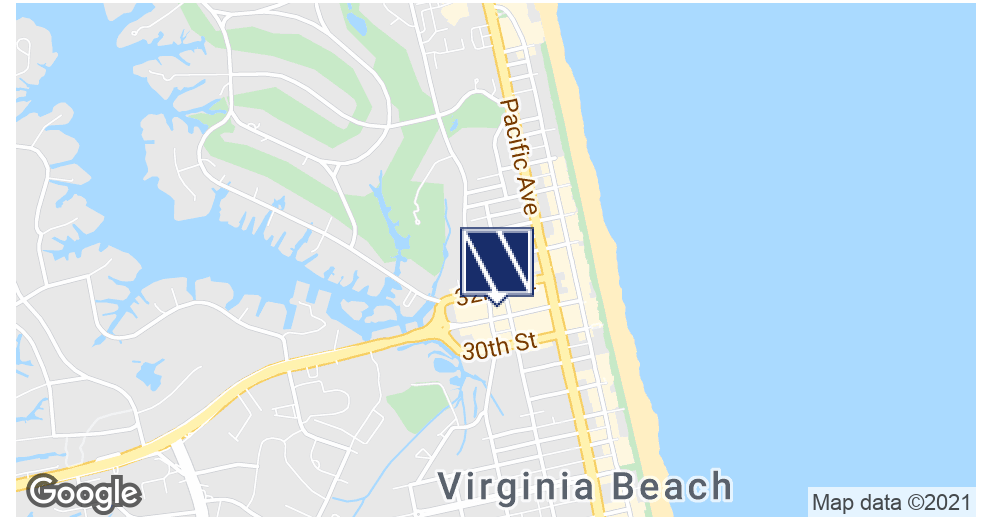
MMURDEN@SLNUSBAUM.COM

C. CHEYNEY COLE, JR., CCIM
VICE PRESIDENT
757.270.5323
CCOLE@SLNUSBAUM.COM

BILL OVERMAN, CCIM
COMMERCIAL BROKERAGE & DEVELOPMENT
757.640.2254
BOVERMAN@SLNUSBAUM.COM

PROPERTY SUMMARY

408 LASKIN ROAD, VIRGINIA BEACH, VA 23451



OFFERING SUMMARY

Lease Rate:	\$45.00 SF/yr (Net of Electric and Janitorial)
Available SF:	6,720 SF
Lot Size:	0.43 Acres
Submarket:	Oceanfront Ret

PROPERTY HIGHLIGHTS

- ±13,320 SF mixed-use building with 6,720 SF office space available on the 2nd Floor with private entrance
- Join Virginia ABC Store, occupying the bottom floor retail space
- Near 31 Ocean Mixed-Use Development, Hilton Hotel, and new Farm Fresh Development
- Located on prime signalized corner of Laskin Road and Holly Road
- Naming rights to building available for the entire second floor
- Space can be subdivided
- Ample parking with additional off-site parking available
- DELIVERY DATE SUMMER 2021

FOR MORE INFORMATION, PLEASE CONTACT:

MARTIN MURDEN
SENIOR ASSOCIATE
757.640.2265
MMURDEN@SLNUSBAUM.COM

C. CHEYNEY COLE, JR., CCIM
VICE PRESIDENT
757.270.5323
CCOLE@SLNUSBAUM.COM

BILL OVERMAN, CCIM
COMMERCIAL BROKERAGE & DEVELOPMENT
757.640.2254
BOVERMAN@SLNUSBAUM.COM

AREA RETAIL

408 LASKIN ROAD, VIRGINIA BEACH, VA 23451



S.L. NUSBAUM REALTY CO. | 1700 WELLS FARGO CENTER, 440 MONTICELLO AVENUE, NORFOLK, VA 23510 | 757.627.8611 | SLNUSBAUM.COM

AREA RETAIL | 3

FOR MORE INFORMATION, PLEASE CONTACT:

MARTIN MURDEN
SENIOR ASSOCIATE
757.640.2265
MMURDEN@SLNUSBAUM.COM

C. CHEYNEY COLE, JR., CCIM
VICE PRESIDENT
757.270.5323
CCOLE@SLNUSBAUM.COM

BILL OVERMAN, CCIM
COMMERCIAL BROKERAGE & DEVELOPMENT
757.640.2254
BOVERMAN@SLNUSBAUM.COM

ADDITIONAL PHOTOS

408 LASKIN ROAD, VIRGINIA BEACH, VA 23451

 S.L. NUSBAUM Realty Co.
Since 1906.



S.L. NUSBAUM REALTY CO. | 1700 WELLS FARGO CENTER, 440 MONTICELLO AVENUE, NORFOLK, VA 23510 | 757.627.8611 | SLNUSBAUM.COM

ADDITIONAL PHOTOS | 4

FOR MORE INFORMATION, PLEASE CONTACT:

MARTIN MURDEN
SENIOR ASSOCIATE
757.640.2265
MMURDEN@SLNUSBAUM.COM

C. CHEYNEY COLE, JR., CCIM
VICE PRESIDENT
757.270.5323
CCOLE@SLNUSBAUM.COM

BILL OVERMAN, CCIM
COMMERCIAL BROKERAGE & DEVELOPMENT
757.640.2254
BOVERMAN@SLNUSBAUM.COM

VIEW FROM SECOND FLOOR OFFICE



408 LASKIN ROAD, VIRGINIA BEACH, VA 23451



S.L. NUSBAUM REALTY CO. | 1700 WELLS FARGO CENTER, 440 MONTICELLO AVENUE, NORFOLK, VA 23510 | 757.627.8611 | SLNUSBAUM.COM

ADDITIONAL PHOTOS | 5

FOR MORE INFORMATION, PLEASE CONTACT:

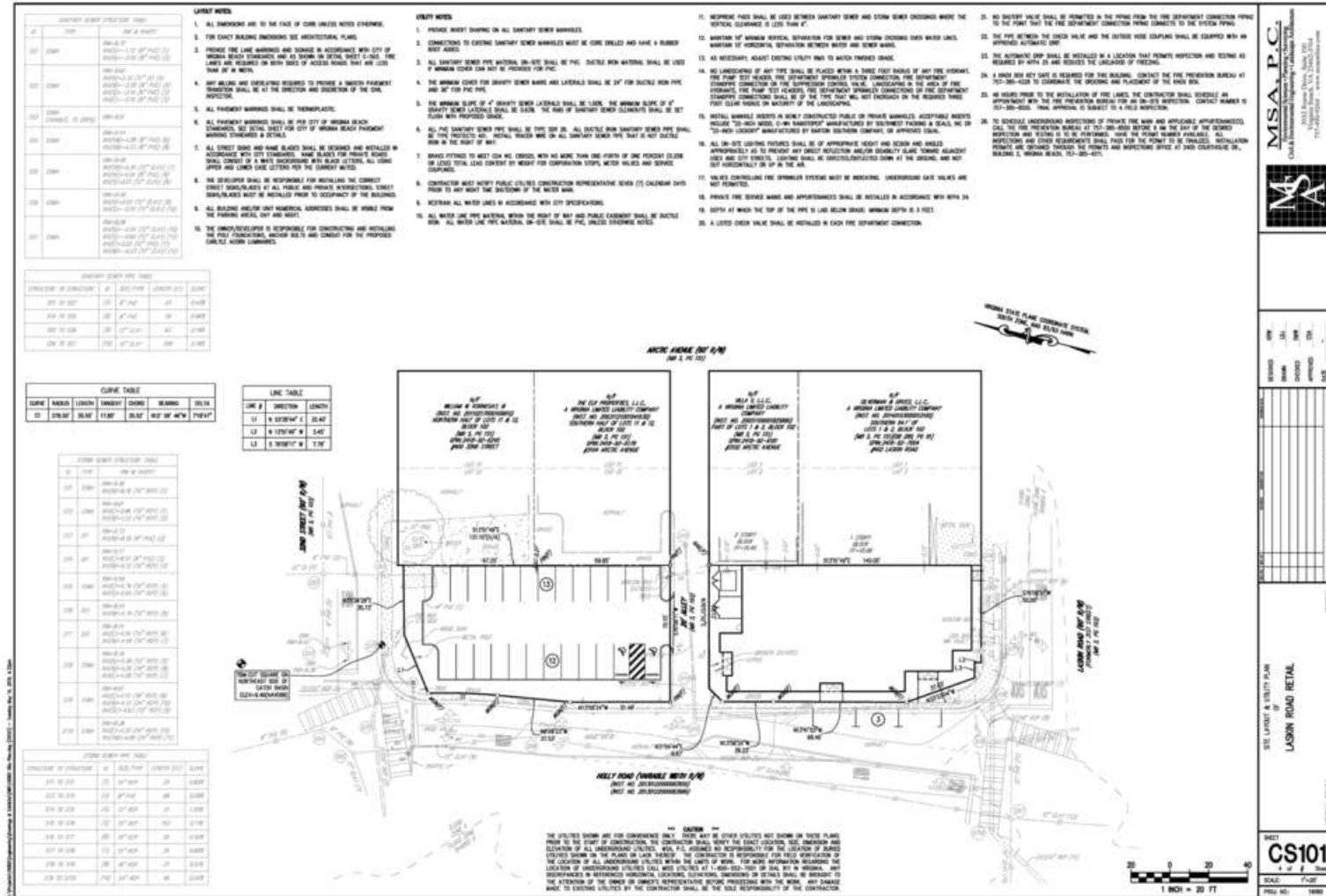
MARTIN MURDEN
SENIOR ASSOCIATE
757.640.2265
MMURDEN@SLNUSBAUM.COM

C. CHEYNEY COLE, JR., CCIM
VICE PRESIDENT
757.270.5323
CCOLE@SLNUSBAUM.COM

BILL OVERMAN, CCIM
COMMERCIAL BROKERAGE & DEVELOPMENT
757.640.2254
BOVERMAN@SLNUSBAUM.COM

SITE PLAN

408 LASKIN ROAD, VIRGINIA BEACH, VA 23451



S.L. NUSBAUM REALTY CO. | 1700 WELLS FARGO CENTER, 440 MONTICELLO AVENUE, NORFOLK, VA 23510 | 757.627.8611 | SLNUSBAUM.COM

SITE PLAN | 6

FOR MORE INFORMATION, PLEASE CONTACT:

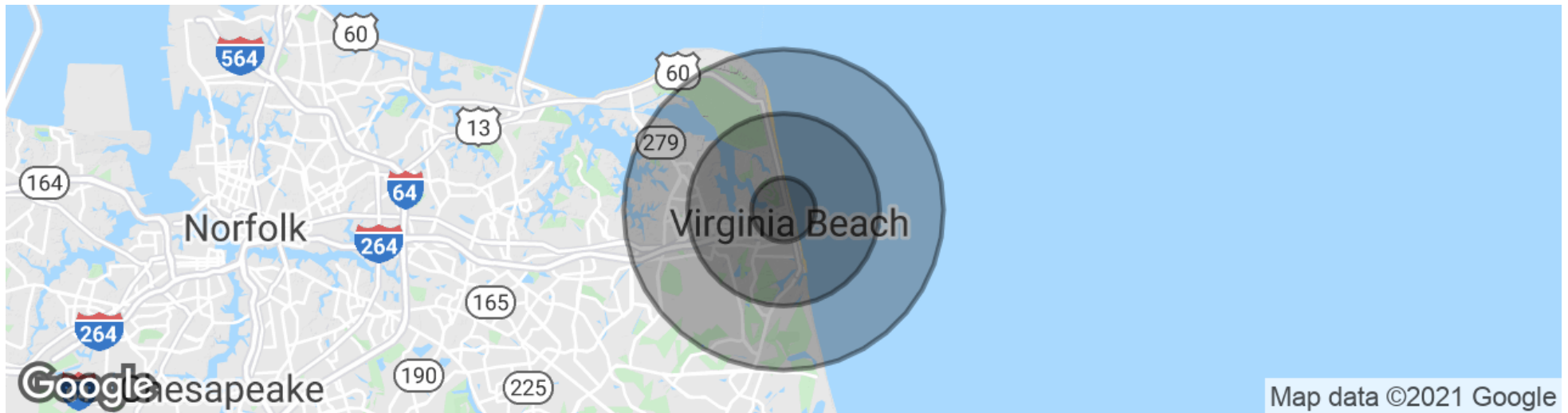
MARTIN MURDEN
SENIOR ASSOCIATE
757.640.2265
MMURDEN@SLNUSBAUM.COM

C. CHEYNEY COLE, JR., CCIM
VICE PRESIDENT
757.270.5323
CCOLE@SLNUSBAUM.COM

BILL OVERMAN, CCIM
COMMERCIAL BROKERAGE & DEVELOPMENT
757.640.2254
BOVERMAN@SLNUSBAUM.COM

DEMOGRAPHICS MAP & REPORT

408 LASKIN ROAD, VIRGINIA BEACH, VA 23451



POPULATION	1 MILE	3 MILES	5 MILES
Total Population	9,101	44,220	77,754
Average Age	40.3	39.5	38.4
HOUSEHOLDS & INCOME	1 MILE	3 MILES	5 MILES
Total Households	4,833	20,288	32,420
# Of Persons Per HH	1.9	2.1	2.3
Average HH Income	\$88,954	\$95,863	\$97,753
Average House Value	\$447,345	\$411,682	\$381,719

* Demographics derived from 2020 CoStar data

FOR MORE INFORMATION, PLEASE CONTACT:

MARTIN MURDEN
SENIOR ASSOCIATE
757.640.2265
MMURDEN@SLNUSBAUM.COM

C. CHEYNEY COLE, JR., CCIM
VICE PRESIDENT
757.270.5323
CCOLE@SLNUSBAUM.COM

BILL OVERMAN, CCIM
COMMERCIAL BROKERAGE & DEVELOPMENT
757.640.2254
BOVERMAN@SLNUSBAUM.COM

CONTACT US

MARTIN MURDEN

SENIOR ASSOCIATE

757.640.2265

MMURDEN@SLNUSBAUM.COM

C. CHEYNEY COLE, JR., CCIM

VICE PRESIDENT

757.270.5323

CCOLE@SLNUSBAUM.COM

BILL OVERMAN, CCIM

COMMERCIAL BROKERAGE & DEVELOPMENT

757.640.2254

BOVERMAN@SLNUSBAUM.COM

S.L. NUSBAUM REALTY CO.

1700 WELLS FARGO CENTER, 440 MONTICELLO AVENUE, NORFOLK, VA 23510

757.627.8611

SLNUSBAUM.COM

DISCLAIMER:

No warranty or representation, expressed or implied, is made to the accuracy or completeness of the information contained herein, and same is submitted subject to errors, omissions, change of price, rental or other conditions, withdrawal without notice, and to any special listing conditions imposed by the property owner(s). As applicable, we make no representation as to the condition of the property (or properties) in question.

