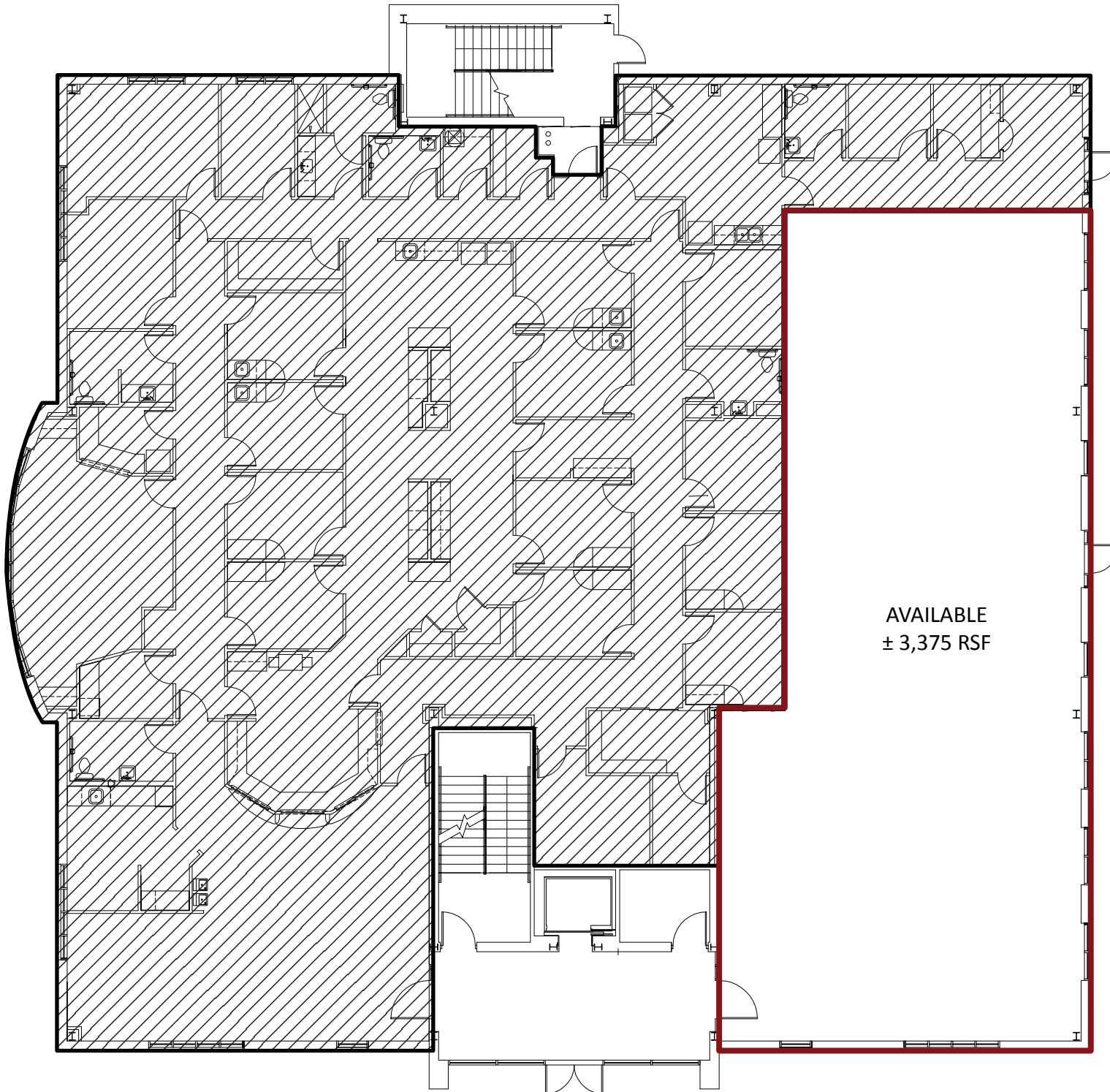


MEDICAL PARK PLAZA  
FIRST FLOOR AVAILABILITY  
128 Medical Park Road  
 Mooresville, North Carolina



AVAILABLE  
± 3,375 RSF



Flagship Healthcare Properties  
2701 Coltsgate Road, Suite 300  
Charlotte, North Carolina 28211  
p. 704-442-0222 | f. 704-367-0196  
[www.FlagshipHP.com](http://www.FlagshipHP.com)