

±26,768 SF
FOR LEASE



5

GOODYEAR

IRVINE, CA 92618

[CLICK HERE
TO TOUR](#)



CORPORATE
HEADQUARTERS
FACILITY

CBRE

PROPERTY FEATURES



Freestanding Corporate
Headquarters,
HVAC in Office & Warehouse



±13,768 SF of Completely
Refurbished, Open Ceiling
Two-Story Office



±13,000 of Warehouse Space



±22' Minimum Warehouse
Clearance



Four (4) Ground Level Doors



Office & Warehouse
Fire Sprinklered



New Drought Resistant
Landscaping



Natural Gas on Premises



±2,000 AMPS, 277/480 Volts, 3
Phase Panel (Verify)



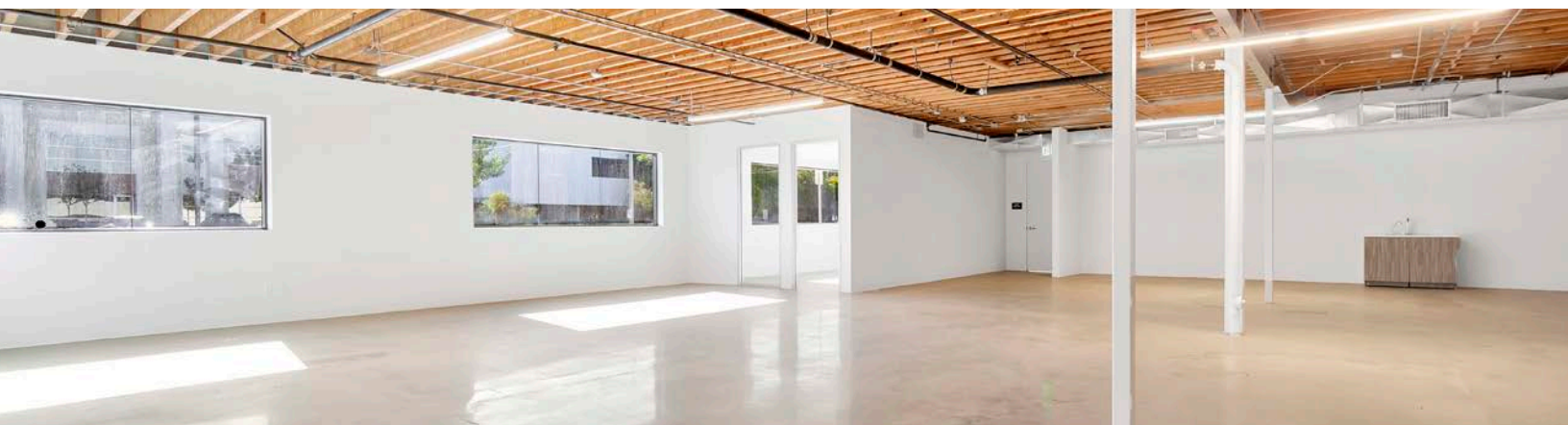
±2.4:1,000 Parking Ratio
(64 Stalls)



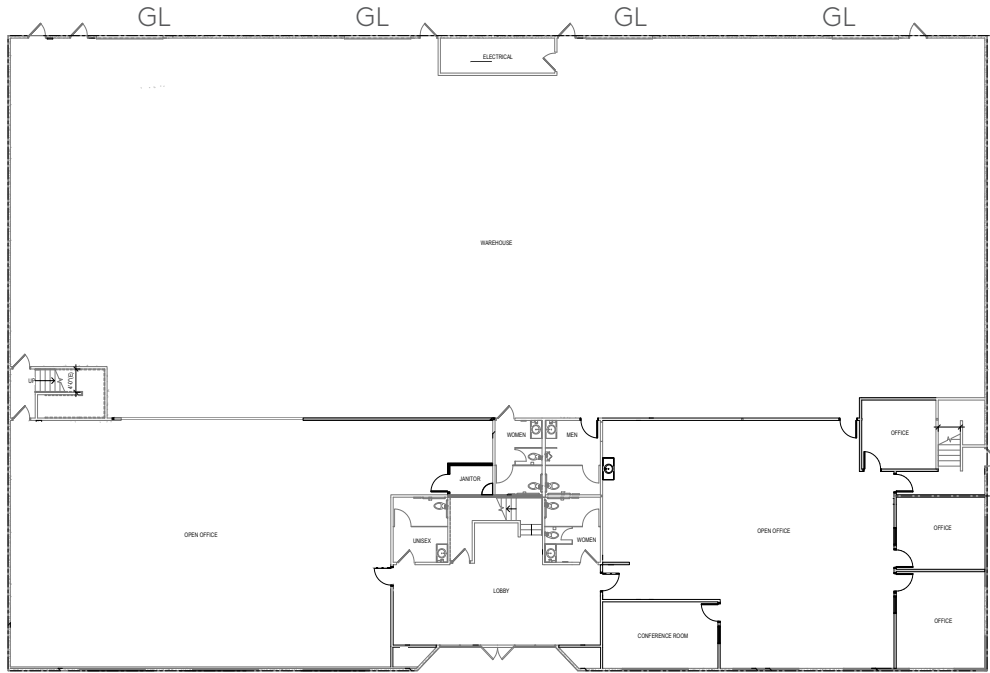
Close Proximity to the Irvine
Spectrum Center, Southern
California's most Popular
Entertainment and Shopping
Destination



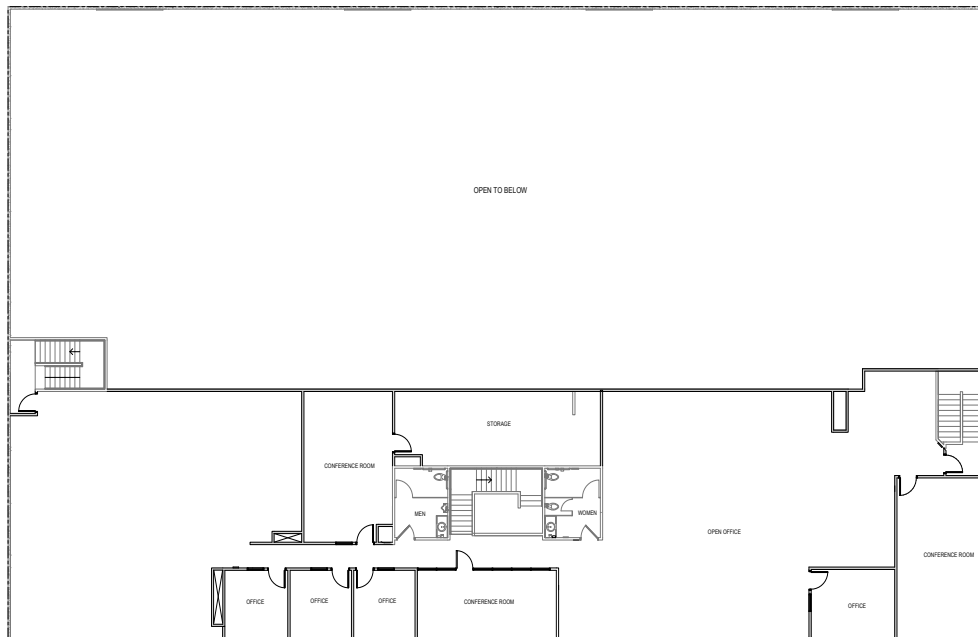
Excellent Access to the 5, 405
and 133 Freeways

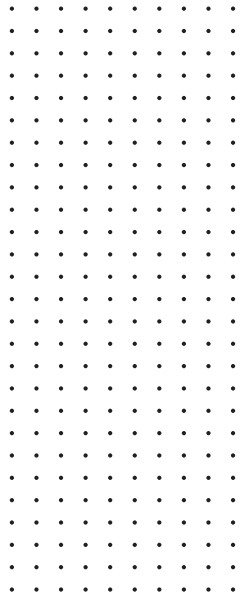


FIRST FLOOR



SECOND FLOOR







IRVINE CENTER DRIVE

BARRANCA PKWY.

5

GOODYEAR

IRVINE, CA 92618



ALTON PARKWAY

JERONIMO

GOODYEAR

BAKE PARKWAY

HUGHES

TRABUCO

CONTACT US

GREGG HALY

Lic. 00937913
+1 949 725 8632
gregg.haly@cbre.com

CHIP WRIGHT

Lic. 00899669
+1 949 725 8526
chip.wright@cbre.com

JEFF CARR

Lic. 01009600
+1 949 725 8631
jeff.carr@cbre.com

±26,768 SF FOR LEASE

CBRE

© 2021 CBRE, Inc. All rights reserved. This information has been obtained from sources believed reliable, but has not been verified for accuracy or completeness. You should conduct a careful, independent investigation of the property and verify all information. Any reliance on this information is solely at your own risk. CBRE and the CBRE logo are service marks of CBRE, Inc. All other marks displayed on this document are the property of their respective owners, and the use of such logos does not imply any affiliation with or endorsement of CBRE.

