

FOR LEASE

URBAN
WORKS

SOUTHEAST
SPACE | 921 SF



RETAIL



CREATIVE

SUNROSE BUILDING

2805 SE ANKENY ST

TYLER BRUSS | DAN BOZICH | 503.228.3080
WWW.URBANWORKSREALESTATE.COM

SUNROSE BUILDING

URBAN
WORKS



ADDRESS | 2805 SE ANKENY ST

SPACE | 921 SF

USES | RETAIL / CREATIVE OFFICE

AREA | LAURELHURST NEIGHBORHOOD

AVAILABLE | NOW

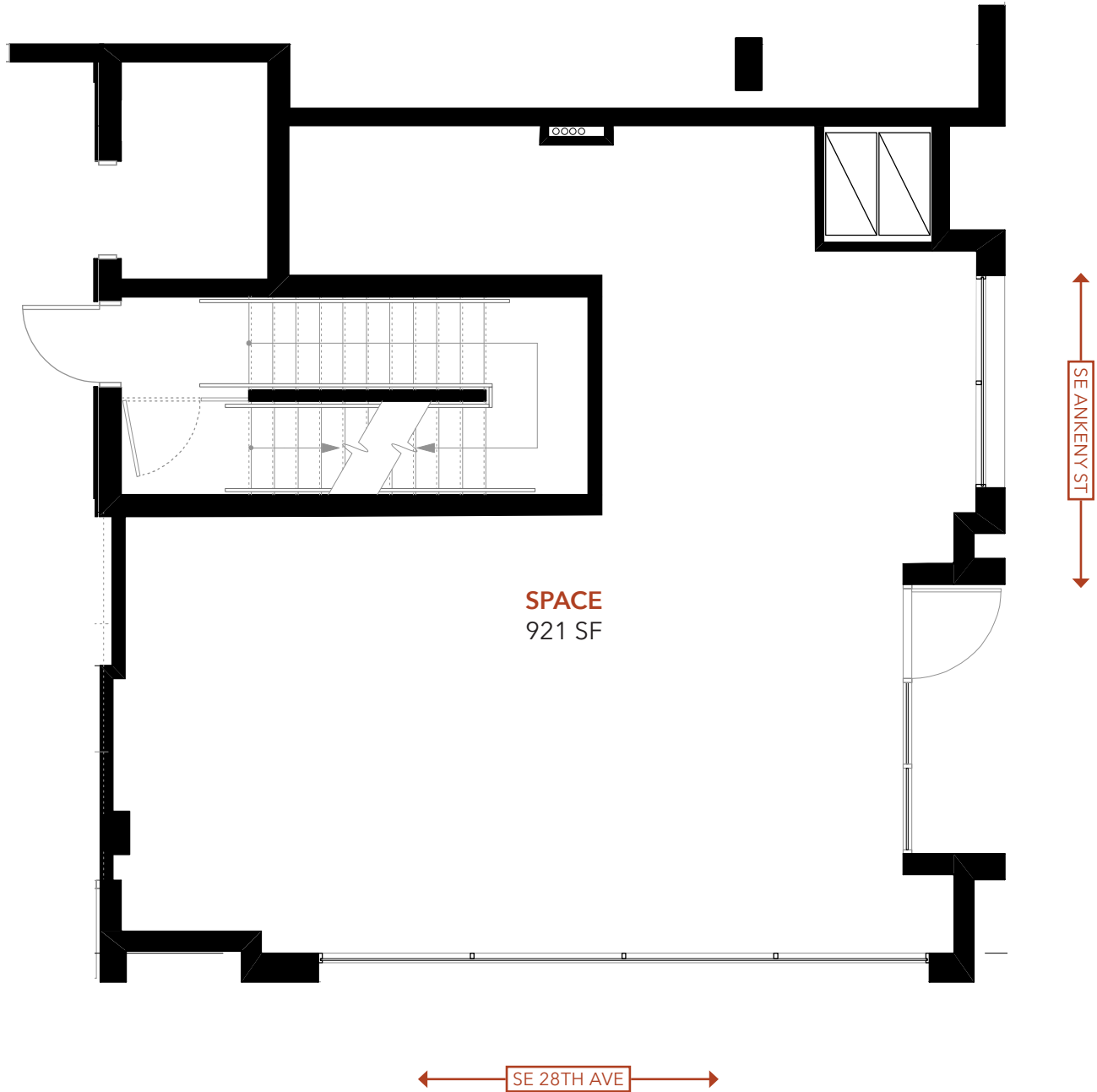
SUNROSE BUILDING

- Designed by Holst Architecture in 2009, the Sunrose Condominiums were built with the idea of urban living in Portland's vibrant inner eastside.
- The 8,261 SF building is one of the premiere "mixed-use" projects in Portland's eastside, which consists of 32 units coupled with ground floor retail.
- The 921 square foot retail space is ideal for any local or regional retailer looking to make its mark in the Laurelhurst, Buckman, Kerns and Sunnyside neighborhoods.
- This is a second generation space with large glass windows and excellent storefront exposure along SE 28th and Ankeny.
- This space is a unique and perfect opportunity for any retail/service looking to happily coexist with local/national retailers, and benefit from high traffic counts, close in location and proximity to many forms of transportation.



FLOOR PLAN

URBAN
WORKS

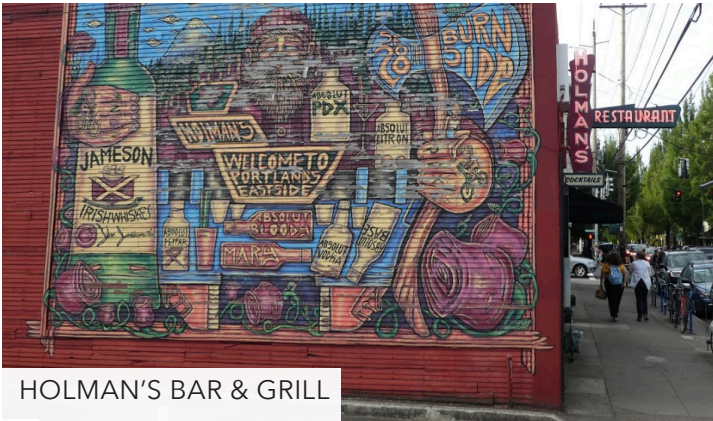


AREA RETAIL & DEMOS

	.25 MILES	.5 MILES	1 MILE
2019 POPULATION	2,917	9,769	34,597
TOTAL EMPLOYEES	1,687	4,548	21,025
TOTAL BUSINESSES	279	741	2,938
MEDIAN HH INCOME	\$73,454	\$69,889	\$72,703
MEDIAN AGE	32.5	33.7	35
SOME COLLEGE	87.7%	88.4%	88.9%



FIFTY LICKS



HOLMAN'S BAR & GRILL



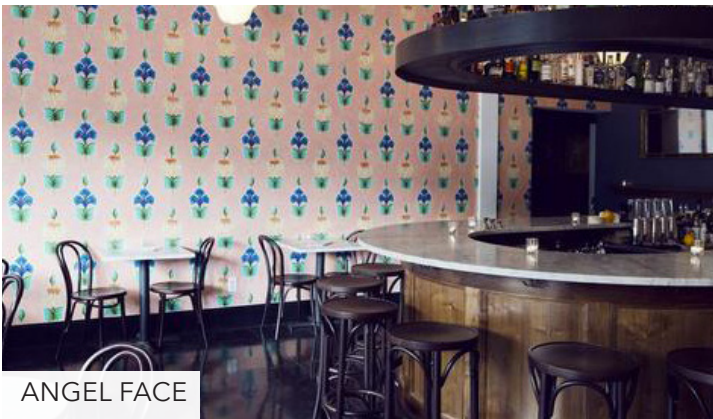
STARBUCKS



THE GOOSE



CHEESE & CRACK



ANGEL FACE



LAURELHURST THEATER

RETAIL MAP

