

DELIVERING SPRING 2024

**70,050 SF
AVAILABLE**



1250 Oakdale Road
GRAND PRAIRIE, TX 75050

OWNED BY:

 **Alliuz**[®]

LUKE DAVIS
214.267.0420
ldavis@streamrealty.com

CHARLES BREWER
214.560.2960
charles.brewer@streamrealty.com

LEASED BY:


STREAM

1250 Oakdale Road

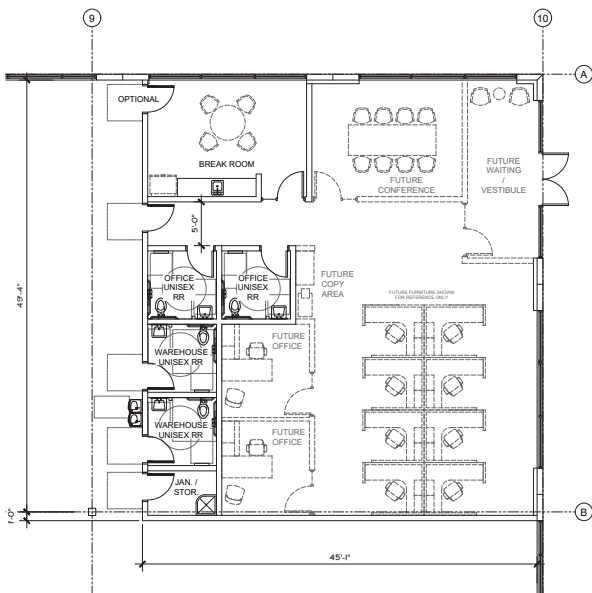
GRAND PRAIRIE, TX 75050

BUILDING DETAILS

- 70,050 SF Available
- 2,270 SF Spec Office
- 28' Clear Height
- 36 Car Parks
- 24 Dock High (9' x 10')
- 2 Ramps (12' x 14')
- Ability to fully fence and secure
- ESFR Sprinkler System

PROPERTY FEATURES

- Access to SH-161 + I-30
- Close proximity to DFW Airport
- Centrally located in DFW metroplex



LUKE DAVIS

214.267.0420

ldavis@streamrealty.com

CHARLES BREWER

214.560.2960

charles.brewer@streamrealty.com



1250 Oakdale Road

GRAND PRAIRIE, TX 75050



LOCATION HIGHLIGHTS

DALLAS CBD:	16 MILES
FORT WORTH CBD:	20 MILES
DFW AIRPORT:	6 MILES
STATE HIGHWAY 161:	.1 MILES
INTERSTATE 30:	3 MILES



LUKE DAVIS

214.267.0420

ldavis@streamrealty.com

CHARLES BREWER

214.560.2960

charles.brewer@streamrealty.com



1250 Oakdale Road

GRAND PRAIRIE, TX 75050



LUKE DAVIS

214.267.0420

ldavis@streamrealty.com

CHARLES BREWER

214.560.2960

charles.brewer@streamrealty.com

