

STAPLES

**408 PERRY STREET
BIG RAPIDS | MICHIGAN**



FOR MORE INFORMATION, CONTACT:

BOB RICHARDSON

**OFFICE
(248) 855-1221**

**FAX
(248) 855-1261**

brichardson@armadarealestate.com

COMMERCIAL REAL ESTATE EXPERTS

Visit our website:
ARMADAREALESTATE.COM



PROPERTY DETAILS

- North Side of Perry Street, East of US-131
- 8,000 - 24,000 Sq. Ft. Available
- Located in the heart of Big Rapids Retail Trade Area
- Adjacent to Ferris State University Campus
- Excellent Visibility



2011 DEMOGRAPHICS

	1 MILE
Total Population	7,998
Average Household Income	\$46,226
	5 MILE
Total Population	19,079
Average Household Income	\$49,495
	10 MILE
Total Population	27,321
Average Household Income	\$49,583

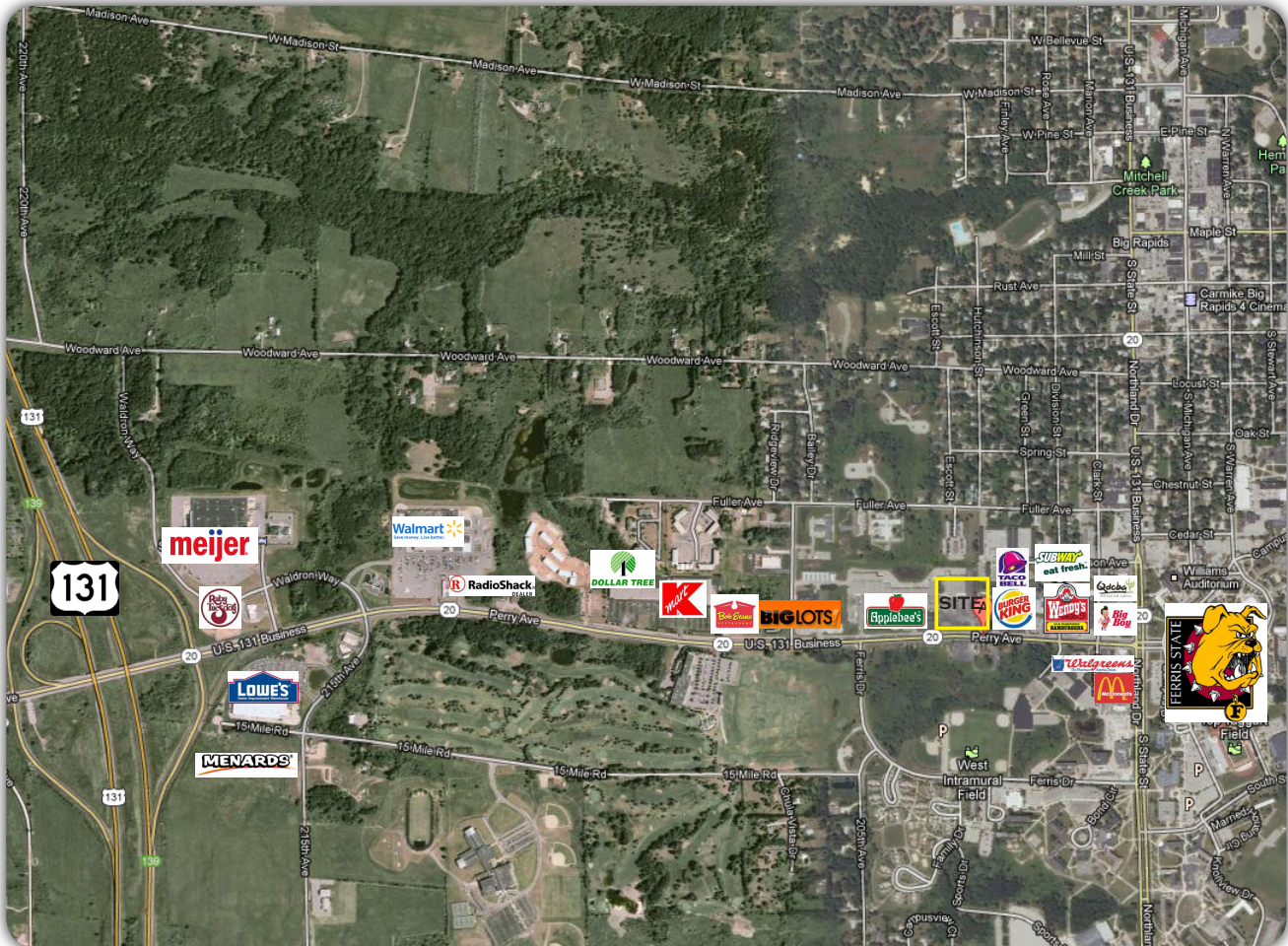


ARMADA REAL ESTATE SERVICES

7001 ORCHARD LAKE ROAD | SUITE 110 | WEST BLOOMFIELD | MI 48322

STAPLES

408 PERRY STREET | BIG RAPIDS | MICHIGAN



DEMOGRAPHIC DETAIL REPORT



Radius	1 Mile	5 Mile	10 Mile
Population			
2016 Projection	8,578	19,822	28,113
2011 Estimate	7,998	19,079	27,321
2010 Census	7,797	18,907	27,153
Growth 2011 - 2016	7.30%	3.90%	2.90%
Growth 2010 - 2011	2.60%	0.90%	0.60%

2011 Population by Age	7,998	19,079	27,321
Age 0 - 4	221 2.76%	873 4.58%	1,351 4.94%
Age 5 - 9	164 2.05%	825 4.32%	1,353 4.95%
Age 10 - 14	145 1.81%	809 4.24%	1,354 4.96%
Age 15 - 19	1,909 23.87%	2,736 14.34%	3,284 12.02%
Age 20 - 24	3,434 42.94%	5,073 26.59%	5,500 20.13%
Age 25 - 34	664 8.30%	1,969 10.32%	2,800 10.25%
Age 35 - 44	273 3.41%	1,357 7.11%	2,313 8.47%
Age 45 - 49	176 2.20%	875 4.59%	1,516 5.55%
Age 50 - 54	177 2.21%	921 4.83%	1,596 5.84%
Age 55 - 59	205 2.56%	924 4.84%	1,538 5.63%
Age 60 - 64	160 2.00%	750 3.93%	1,331 4.87%
Age 65 - 74	222 2.78%	1,037 5.44%	1,926 7.05%
Age 75 - 84	158 1.98%	643 3.37%	1,049 3.84%
Age 85 and over	91 1.14%	287 1.50%	411 1.50%
Age 65 and over	471 5.89%	1,967 10.31%	3,386 12.39%
Median Age	22.30	24.20	27.60
Average Age	27.50	33.10	35.40

All information contained herein was obtained from sources we deem to be reliable but is not guaranteed. This copyrighted report contains research licensed to Armada Real Estate - 66132.

DEMOGRAPHIC DETAIL REPORT

Radius	1 Mile	5 Mile	10 Mile
2011 Population By Race	7,998	19,079	27,321
White	7,058 88.25%	17,366 91.02%	25,300 92.60%
Black or African American	528 6.60%	858 4.50%	937 3.43%
American Indian and Alaska Native	57 0.71%	106 0.56%	154 0.56%
Asian	138 1.73%	233 1.22%	253 0.93%
Native Hawaiian and Pacific Islander	4 0.05%	6 0.03%	6 0.02%
Other Race	45 0.56%	86 0.45%	105 0.38%
Two or More Races	167 2.09%	426 2.23%	567 2.08%
2011 Population by Hispanic Origin	7,997	19,081	27,322
Not Hispanic or Latino	7,817 97.75%	18,680 97.90%	26,821 98.17%
Hispanic or Latino	180 2.25%	401 2.10%	501 1.83%
2011 Age 5+ Language at Home	8,689	17,892	25,642
Speak Only English	8,131 93.58%	17,009 95.06%	24,551 95.75%
Speak Asian or Pacific Island	212 2.44%	253 1.41%	257 1.00%
Speak IndoEuropean	133 1.53%	215 1.20%	291 1.13%
Speak Spanish	152 1.75%	307 1.72%	420 1.64%
Speak Other Language	61 0.70%	108 0.60%	123 0.48%
2011 Median Age, Male	22.30	23.90	25.80
2011 Average Age, Male	26.20	31.50	34.30
Median Age, Female	22.30	24.70	29.80
Average Age, Female	28.90	34.70	36.60
2011 Population by Occupation Classification (Age 16+)	3,326	7,470	10,852
Blue Collar	458 13.77%	1,465 19.61%	2,516 23.18%
White Collar	1,880 56.52%	4,305 57.63%	5,944 54.77%
Service	988 29.71%	1,700 22.76%	2,392 22.04%
2011 Population by Marital Status (Age 15+)	8,375	16,342	22,903
Total, Never Married	6,711 80.13%	9,091 55.63%	10,499 45.84%
Married	1,381 16.49%	5,714 34.97%	9,725 42.46%
Widowed	65 0.78%	556 3.40%	886 3.87%
Divorced	218 2.60%	981 6.00%	1,793 7.83%

All information contained herein was obtained from sources we deem to be reliable but is not guaranteed. This copyrighted report contains research licensed to Armada Real Estate - 66132.

DEMOGRAPHIC DETAIL REPORT

Radius	1 Mile	5 Mile	10 Mile
2011 Population by Education	2,365	8,505	14,033
Less Than 9th Grade	6 0.25%	115 1.35%	284 2.02%
Some High School, No Diploma	392 16.58%	969 11.39%	1,515 10.80%
High School Grad (Incl Equivalency)	703 29.73%	2,787 32.77%	5,057 36.04%
Some College, No Degree	424 17.93%	1,553 18.26%	2,760 19.67%
Associate Degree	332 14.04%	827 9.72%	1,241 8.84%
Bachelor Degree	264 11.16%	1,291 15.18%	1,900 13.54%
Advanced Degrees	244 10.32%	963 11.32%	1,276 9.09%

2011 Population by Occupation (Age 16+)	4,312	9,170	13,244
Management, Business, & Financial	814 18.88%	1,839 20.05%	2,609 19.70%
Professional & Related Occupations	103 2.39%	215 2.34%	327 2.47%
Services	2,721 63.10%	5,142 56.07%	7,143 53.93%
Sales & Office	371 8.60%	807 8.80%	1,106 8.35%
Farming, Fishing, and Forestry	1 0.02%	16 0.17%	44 0.33%
Construction and Extraction, Maint	18 0.42%	235 2.56%	471 3.56%
Production & Transportation	284 6.59%	916 9.99%	1,544 11.66%

2011 Workers by Travel Time to Work (Age 16+)	3,134	7,142	10,460
Less Than 15 Minutes	2,481 79.16%	4,444 62.22%	5,303 50.70%
15 to 29 Minutes	381 12.16%	1,540 21.56%	2,969 28.38%
30 to 44 Minutes	60 1.91%	283 3.96%	596 5.70%
45 to 59 Minutes	32 1.02%	224 3.14%	397 3.80%
60+ Minutes	180 5.74%	651 9.12%	1,195 11.42%

2000 Households by HH Size	2,059	6,568	9,786
1-Person Households	648 31.47%	1,935 29.46%	2,682 27.41%
2-Person Households	669 32.49%	2,273 34.61%	3,584 36.62%
3-Person Households	317 15.40%	1,015 15.45%	1,493 15.26%
4-Person Households	336 16.32%	925 14.08%	1,306 13.35%
5-Person Households	48 2.33%	261 3.97%	432 4.41%
6-Person Households	31 1.51%	110 1.67%	187 1.91%
7 or more Person Households	10 0.49%	49 0.75%	102 1.04%

2011 Average Household Size	2.36	2.37	2.43
------------------------------------	-------------	-------------	-------------

All information contained herein was obtained from sources we deem to be reliable but is not guaranteed. This copyrighted report contains research licensed to Armada Real Estate - 66132.

DEMOGRAPHIC DETAIL REPORT

Households

2016 Projection	2,415	6,991	10,246
2011 Estimate	2,149	6,642	9,860
2010 Census	2,060	6,567	9,787
Growth 2011 - 2016	12.40%	5.20%	3.90%
Growth 2010 - 2011	4.30%	1.10%	0.80%

2011 Households by HH Income **2,150** **6,643** **9,861**

Income: Less than \$15,000	455 21.16%	1,406 21.17%	1,966 19.94%
Income: \$15,000 - \$24,999	397 18.47%	1,038 15.63%	1,487 15.08%
Income: \$25,000 - \$34,999	335 15.58%	904 13.61%	1,353 13.72%
Income: \$35,000 - \$49,999	324 15.07%	937 14.11%	1,470 14.91%
Income: \$50,000 - \$74,999	289 13.44%	1,078 16.23%	1,689 17.13%
Income: \$75,000 - \$99,999	120 5.58%	533 8.02%	849 8.61%
Income: \$100,000 - \$149,999	170 7.91%	526 7.92%	753 7.64%
Income: \$150,000 - \$199,999	28 1.30%	119 1.79%	159 1.61%
Income: \$200,000+	32 1.49%	102 1.54%	135 1.37%

2011 Avg Household Income	\$46,226	\$49,495	\$49,583
2011 Med Household Income	\$30,918	\$34,613	\$35,918
2011 Per Capita Income	\$17,970	\$19,795	\$19,763

2011 Occupied Housing **2,149** **6,642** **9,861**

Owner Occupied	657 30.57%	3,497 52.65%	6,185 62.72%
Renter Occupied	1,492 69.43%	3,145 47.35%	3,676 37.28%

2000 Housing Units **2,355** **7,196** **11,450**

1 Unit Attached	57 2.42%	150 2.08%	176 1.54%
1 Unit Detached	803 34.10%	4,007 55.68%	7,334 64.05%
2 Units	168 7.13%	300 4.17%	333 2.91%
3 - 19 Units	1,119 47.52%	1,680 23.35%	1,689 14.75%
20 - 49 Units	141 5.99%	211 2.93%	211 1.84%
50 or more Units	23 0.98%	52 0.72%	52 0.45%
Mobile Home or Trailer	44 1.87%	784 10.89%	1,639 14.31%
Boat, RV, Van, Etc.	0 0.00%	12 0.17%	16 0.14%

All information contained herein was obtained from sources we deem to be reliable but is not guaranteed. This copyrighted report contains research licensed to Armada Real Estate - 66132.

DEMOGRAPHIC DETAIL REPORT

2011 Housing Value - Owner Occupied	512	3,409	6,137
Value Less than \$20,000	1 0.20%	133 3.90%	246 4.01%
Value \$20,000 - \$39,999	11 2.15%	167 4.90%	321 5.23%
Value \$40,000 - \$59,999	7 1.37%	145 4.25%	313 5.10%
Value \$60,000 - \$79,999	41 8.01%	231 6.78%	484 7.89%
Value \$80,000 - \$99,999	50 9.77%	388 11.38%	769 12.53%
Value \$100,000 - \$149,999	204 39.84%	1,066 31.27%	1,804 29.40%
Value \$150,000 - \$199,999	138 26.95%	646 18.95%	1,060 17.27%
Value \$200,000 - \$299,999	44 8.59%	481 14.11%	810 13.20%
Value \$300,000 - \$399,999	6 1.17%	86 2.52%	202 3.29%
Value \$400,000 - \$499,999	9 1.76%	42 1.23%	71 1.16%
Value \$500,000 - \$749,999	1 0.20%	21 0.62%	40 0.65%
Value \$750,000 - \$999,999	0 0.00%	0 0.00%	10 0.16%
Value \$1,000,000 or more	0 0.00%	3 0.09%	7 0.11%

2011 Med Housing Val-Owner Occupied	\$130,106	\$128,589	\$123,420
--	------------------	------------------	------------------

2011 Housing Units by Yr Built	2,355	7,195	11,448
Built 2005 to Present	96 4.08%	307 4.27%	367 3.21%
Built 2000 to 2004	226 9.60%	544 7.56%	925 8.08%
Built 1990 to 1999	290 12.31%	1,001 13.91%	1,775 15.50%
Built 1980 to 1989	221 9.38%	953 13.25%	1,609 14.05%
Built 1970 to 1979	191 8.11%	1,116 15.51%	2,068 18.06%
Built 1960 to 1969	475 20.17%	1,123 15.61%	1,623 14.18%
Built 1950 to 1959	240 10.19%	602 8.37%	860 7.51%
Built 1940 to 1949	174 7.39%	432 6.00%	635 5.55%
Built 1939 or Earlier	442 18.77%	1,117 15.52%	1,586 13.85%

2011 Median Year Built	1967	1973	1975
-------------------------------	-------------	-------------	-------------

All information contained herein was obtained from sources we deem to be reliable but is not guaranteed. This copyrighted report contains research licensed to Armada Real Estate - 66132.