



**MOUNTAIN WEST**  
COMMERCIAL REAL ESTATE



# PAYSON INDUSTRIAL CONDOS

1689 SOUTH AMERICAN WAY • PAYSON • UTAH

## FOR SALE OR LEASE

### PROPERTY SPECS

- Q3 2023 est. Delivery
- Direct access to I-15 via 800 S.
- 24' Clear Height
- 14'x14' Ground level doors
- 200 amp 3-phase to each unit
- Sale Price - \$250 PSF
- Lease Rate:  
Warehouse \$1.25 PSF/NNN  
Office \$1.50 PSF/NNN

BUILDING	SPACE AVAILABLE
Building A	2,365 SF – 13,215 SF
Building B	2,365 SF – 15,934 SF
Building C	2,635 SF – 13,207 SF
Building D	2,635 SF – 10,587 SF
Building E	2,635 SF – 21,217SF

### CONTACT:

#### NIC WOODS

nwoods@mntwest.com  
direct 801.719.4309  
[View Profile](#)

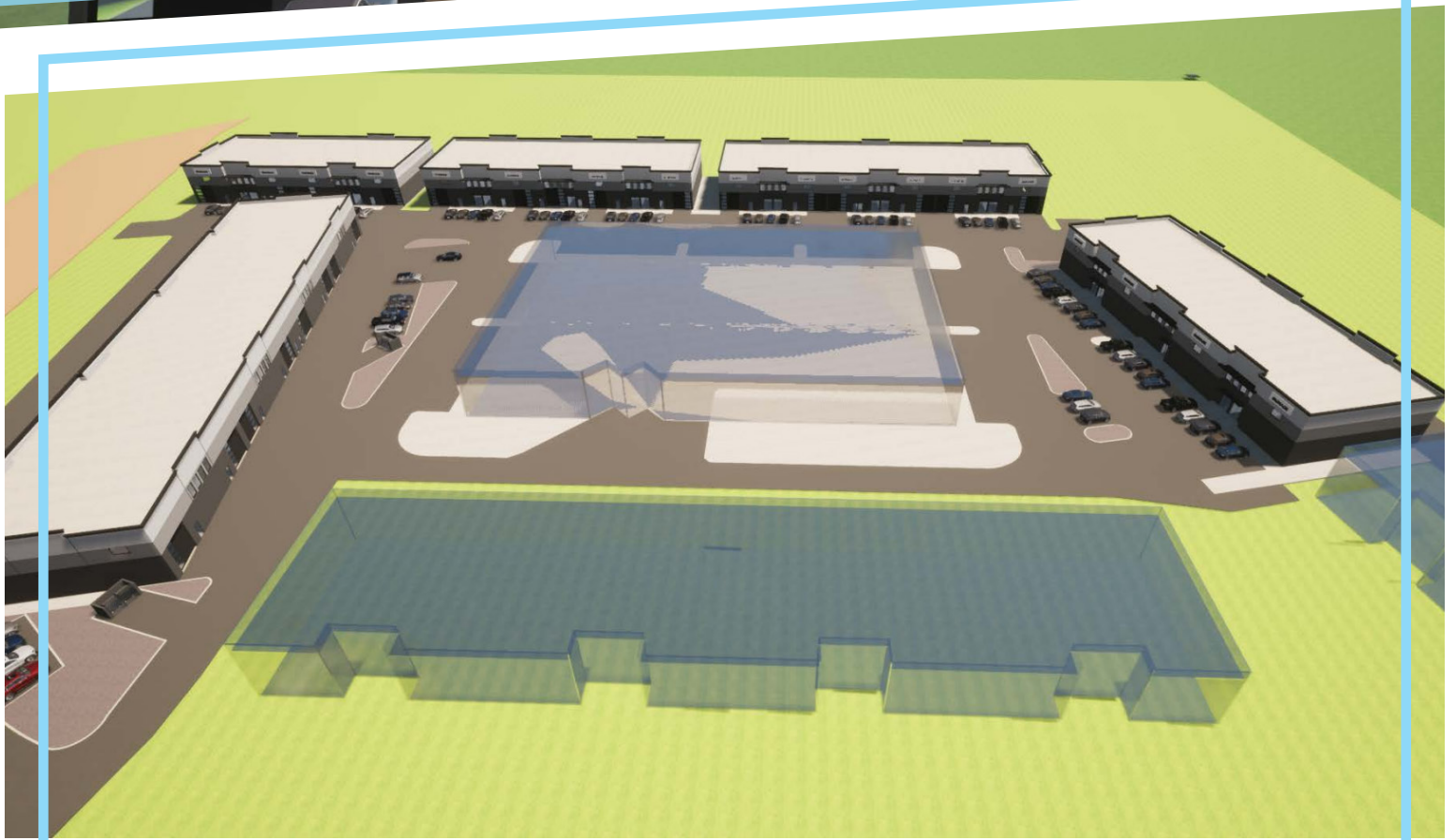
#### ZACH ANDERSON

zanderson@mntwest.com  
direct 801.558.6630  
[View Profile](#)



FULL SERVICE COMMERCIAL REAL ESTATE

# PAYSON INDUSTRIAL CONDOS



## CONTACT:

### NIC WOODS

nwoods@mtwest.com  
direct 801.719.4309  
[View Profile](#)

### ZACH ANDERSON

zanderson@mtwest.com  
direct 801.558.6630  
[View Profile](#)

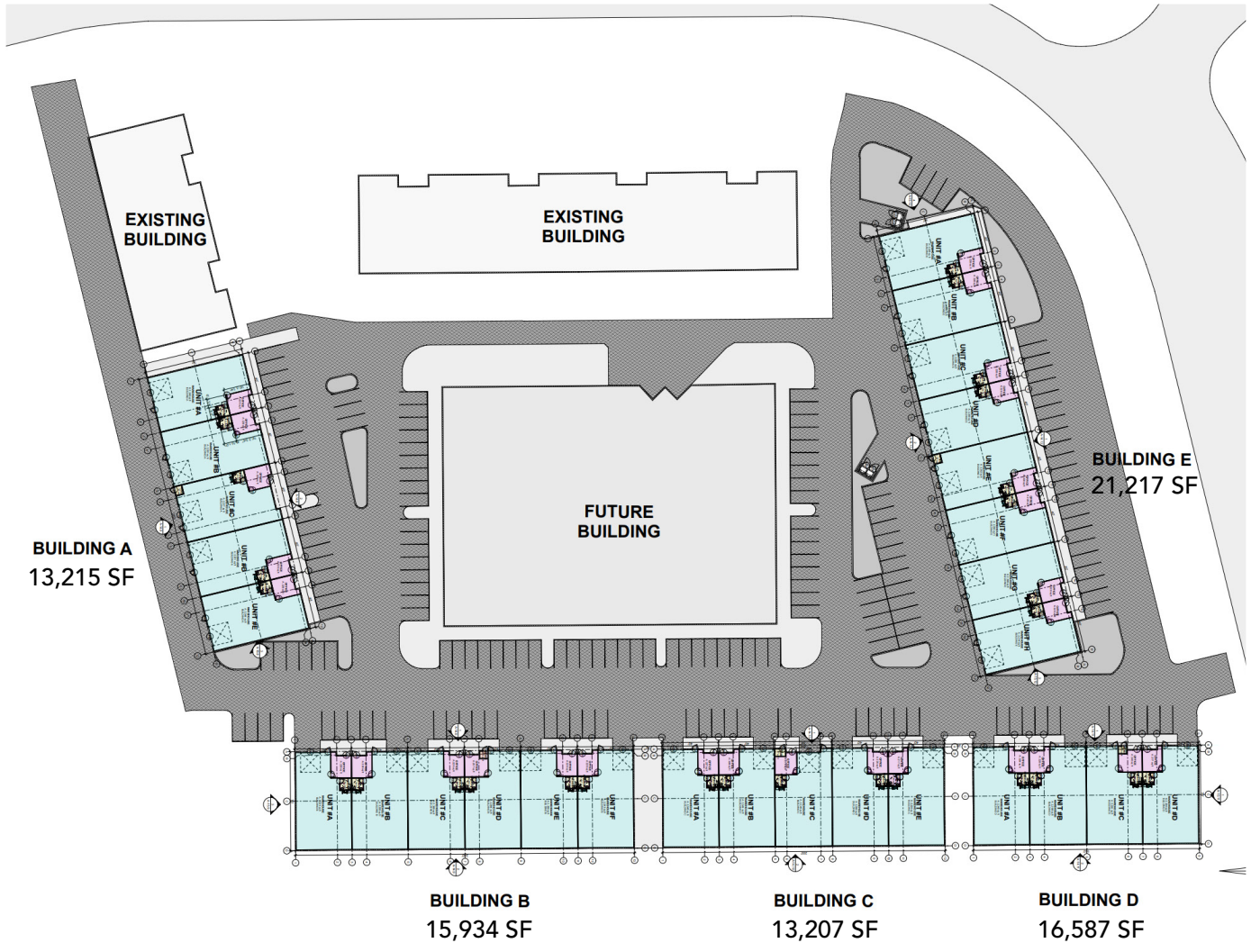


FULL SERVICE COMMERCIAL REAL ESTATE

215 W. Grove Pkwy., Suite J | Pleasant Grove, UT 84062 | Office 385.233.9140 | [www.mtwest.com](http://www.mtwest.com)

This statement with the information it contains is given with the understanding that all negotiations relating to the purchase, renting or leasing of the property described above shall be conducted through this office. The above information while not guaranteed has been secured from sources we believe to be reliable.

# PAYSON INDUSTRIAL CONDOS



## CONTACT:

### NIC WOODS

nwoods@mtnwest.com  
direct 801.719.4309  
[View Profile](#)

### ZACH ANDERSON

zanderson@mtnwest.com  
direct 801.558.6630  
[View Profile](#)



FULL SERVICE COMMERCIAL REAL ESTATE

# PAYSON INDUSTRIAL CONDOS



## CONTACT:

**NIC WOODS**

nwoods@mtwest.com

direct 801.719.4309

[View Profile](#)

**ZACH ANDERSON**

zanderson@mtwest.com

direct 801.558.6630

[View Profile](#)

