



# FOR LEASE

## ±10,000 SF INDUSTRIAL BUILDING OPPORTUNITY

24 Concourse Way  
Greer, SC 29650



LEE & ASSOCIATES  
GREENVILLE/SPARTANBURG

**Andrew Harrill, CCIM**

Senior Vice President  
864.607.7223

[aharrill@lee-associates.com](mailto:aharrill@lee-associates.com)

**Jordan Skellie, SIOR**

EVP/Principal  
864.238.2188

[jskellie@lee-associates.com](mailto:jskellie@lee-associates.com)

**Joey Schirripa**

Associate  
864.569.6951

[jschirripa@lee-associates.com](mailto:jschirripa@lee-associates.com)

**864.704.1040**

[LeeUpstate.com](http://LeeUpstate.com)

PRICING/RATE:

**\$15.00/SF  
NNN**

Interactive PDF



- ±6,350 SF Warehouse
- ±3,650 SF Office
- Docks: 2 (10' x 10')
- Drive-Ins: 2 (10' x 10')
- Clear Height: 16-17'



**I-85**  
±0.5 MILES



**DOCK DOORS**  
2 (TWO) 10' X 10'



**ACREAGE**  
±1.29 ACRES



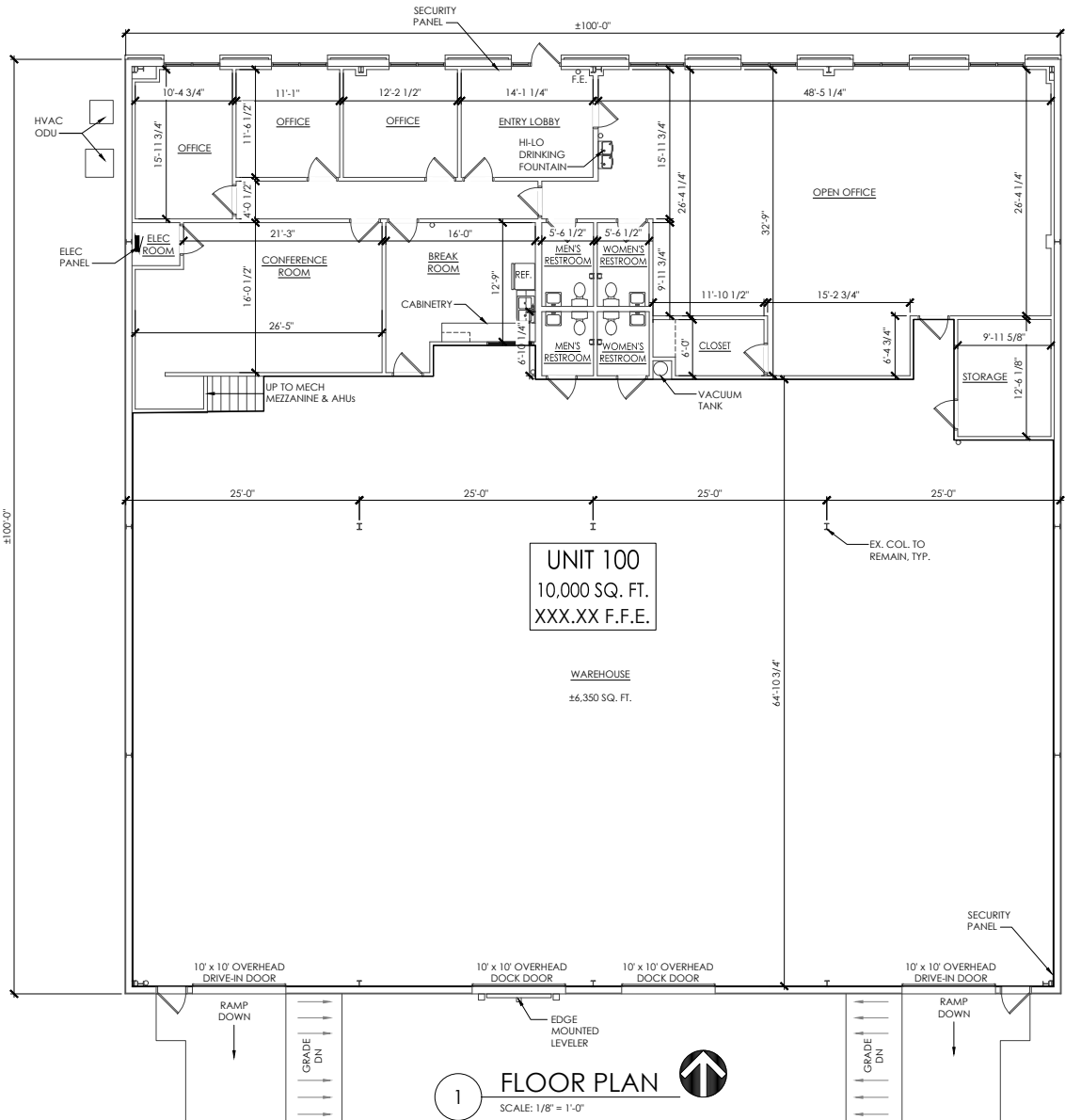
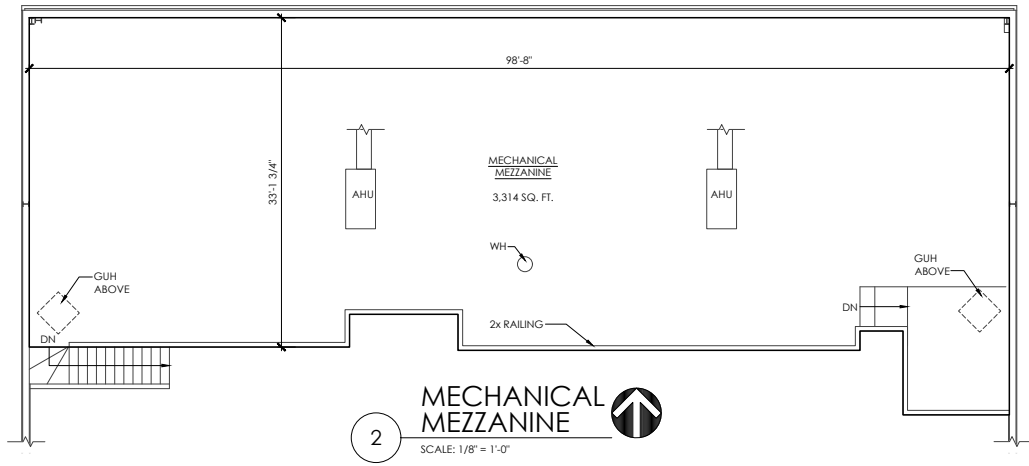
**DRIVE-INS**  
2 (TWO) 10' X 10'

# PROPERTY OVERVIEW & PHOTOS

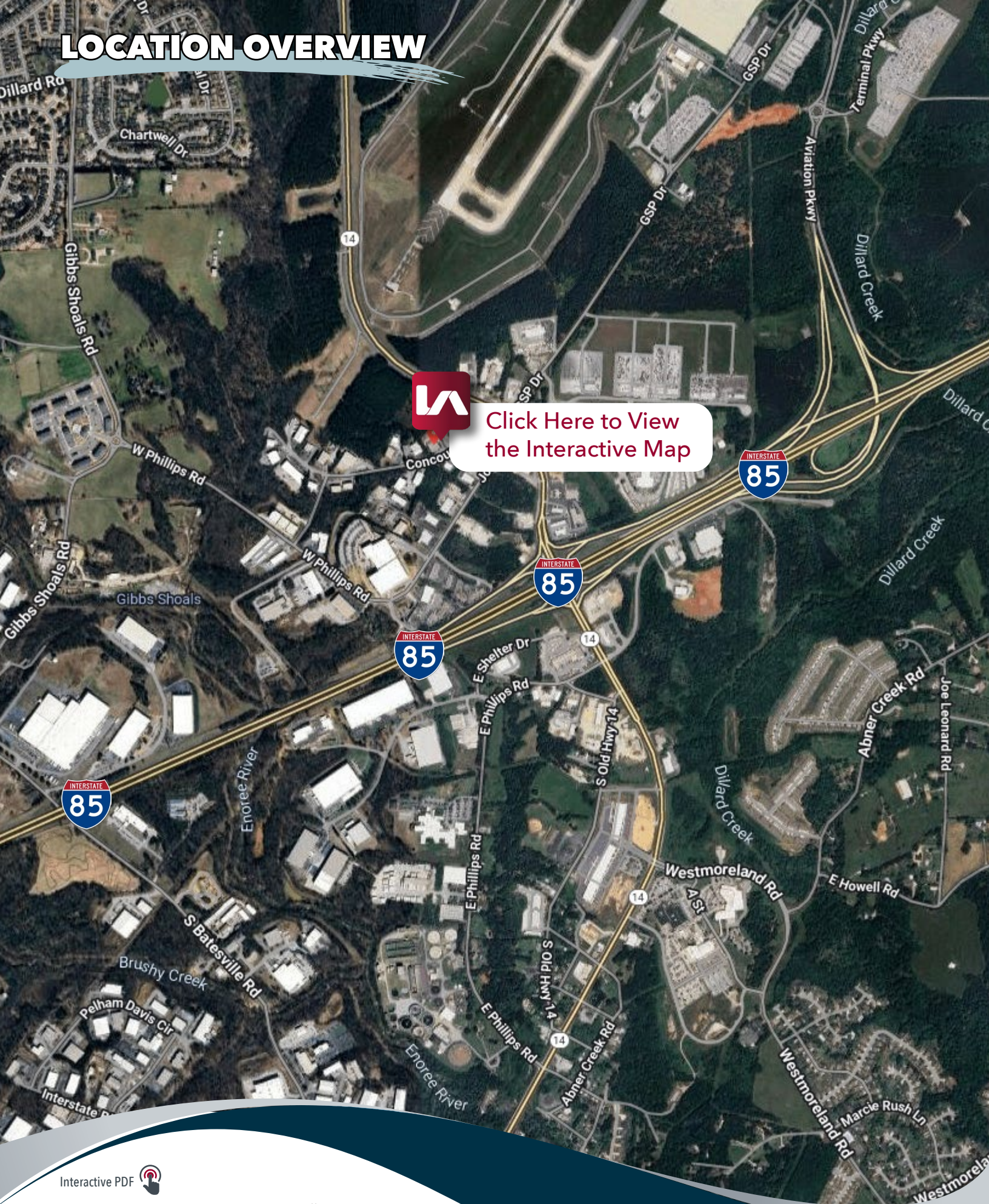
TYPE	Industrial
TOTAL AVAILABLE SF	±10,000 SF
TOTAL BUILDING SF	±10,000 SF
TAX MAP #	0529030101606
ZONING	S-1 (GSP Environs)
COUNTY	Greenville
CITY LIMITS	No
WAREHOUSE SF	±6,350 SF
OFFICE SF	±3,650 SF
CLEAR HEIGHT	16'-17'
DOCK DOORS	2 (Two) 10'x10'
DRIVE-IN DOORS	2 (Two) 10'x10'
LIGHTING	LED
PARKING	10 Spaces
POWER	3 Phase; 225 Amps



# FLOOR PLAN



# LOCATION OVERVIEW



Click Here to View  
the Interactive Map

Interactive PDF 

201 W. McBee Ave, Suite 400, Greenville, SC 29601  
320 E. Main Street, Suite 430, Spartanburg, SC 29302  
**LeeUpstate.com | 864.704.1040**



Interactive PDF 

# LEARN MORE CALL TODAY



LEE & ASSOCIATES  
GREENVILLE/SPARTANBURG

**864.704.1040**  
**LeeUpstate.com**

**GREENVILLE OFFICE**  
201 W. McBee Ave, Suite 400  
Greenville, SC 29601

**SPARTANBURG OFFICE**  
320 E. Main Street, Suite 430  
Spartanburg, SC 29302

All information furnished regarding the properties and information in this packet is from sources deemed reliable, but no warranty or representation is made to the accuracy thereof and same is submitted to errors, omissions, change of price, rental or other conditions prior to sale, lease or financing or withdrawal without notice. No liability of any kind is to be imposed on the broker herein.



**Andrew  
Harrill,  
CCIM**



 **864.607.7223**

Senior Vice President  
aharrill@lee-associates.com



**Jordan  
Skellie,  
SIOR**



 **864.238.2188**

EVP/Principal  
jskellie@lee-associates.com



**Joey  
Schirripa**



 **864.569.6951**

Associate  
jschirripa@lee-associates.com