



**2417 ATRIUM DR**

**RALEIGH, NC 27607**

**OFFICE SPACE**

**FOR  
LEASE**

**LISTING BROKER:**

**FRED DICKENS**

**919.227.5508 (O) | 919.673.4775 (M)**

**FDICKENS@TRADEMARKPROPERTIES.COM**



**1001 WADE AVENUE SUITE 300, RALEIGH, NC 27605  
TRADEMARKPROPERTIES.COM | 919-782-5552**

**2417 ATRIUM DRIVE  
RALEIGH, NC 27607**

## PROPERTY HIGHLIGHTS

- » **Class A Medical Office**
- » **Availability:**
  - » **Suite 101: 8,397 SF** (08/01/2026)
  - » **Suite 150: 8,838 SF**
  - » **Suite 200 : 3,181 SF**
  - » **Suite 202: 3,231 SF**
  - » **Suite 250: 4,762 SF**
- » **Premier location on Atrium Drive across Blue Ridge Road from Rex Hospital**
- » **Near I-440 and Wade Avenue**
- » **Building has free covered parking and surface parking on-site**
- » **Recently renovated lobby**
- » **Monument signage available**
- » **Secure, conditioned storage on-site**
- » **Brand new HVAC and controls**



2417 ATRIUM DRIVE  
RALEIGH, NC 27607

## PROPERTY PHOTOS

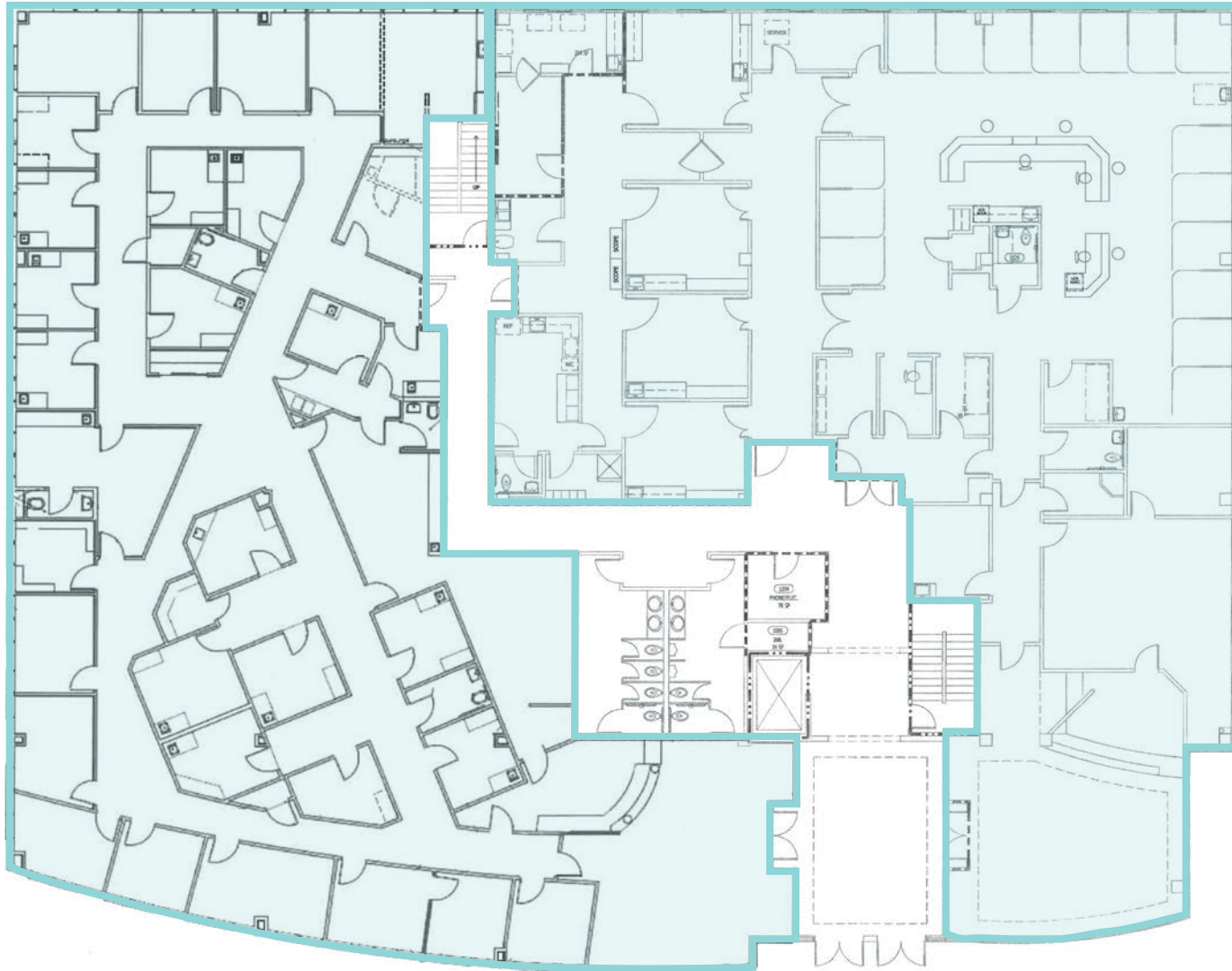


2417 ATRIUM DRIVE  
RALEIGH, NC 27607

# FLOOR PLAN



SUITE 101  
8,397 SF



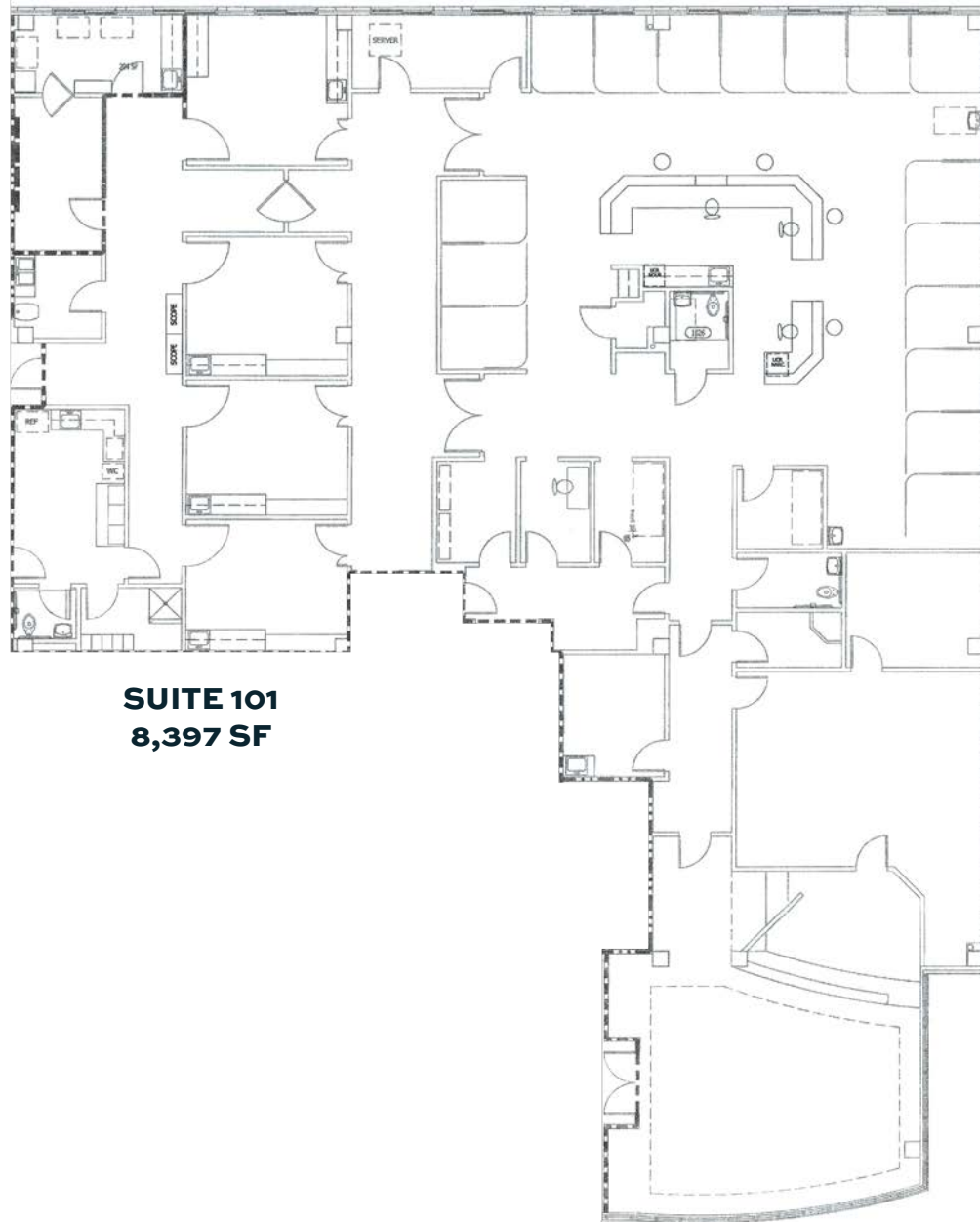
SUITE 150  
8,838 SF

**\*FLOOR PLANS ARE REPRESENTATIVE ONLY AND NOT TO SCALE.**

FRED DICKENS  
919.227.5508 DIRECT | 919.673.4775 MOBILE  
FDICKENS@TRADEMARKPROPERTIES.COM

2417 ATRIUM DRIVE  
RALEIGH, NC 27607

## FLOOR PLAN



**SUITE 101**  
**8,397 SF**

**\*FLOOR PLANS ARE REPRESENTATIVE ONLY AND NOT TO SCALE.**

# FLOOR PLAN

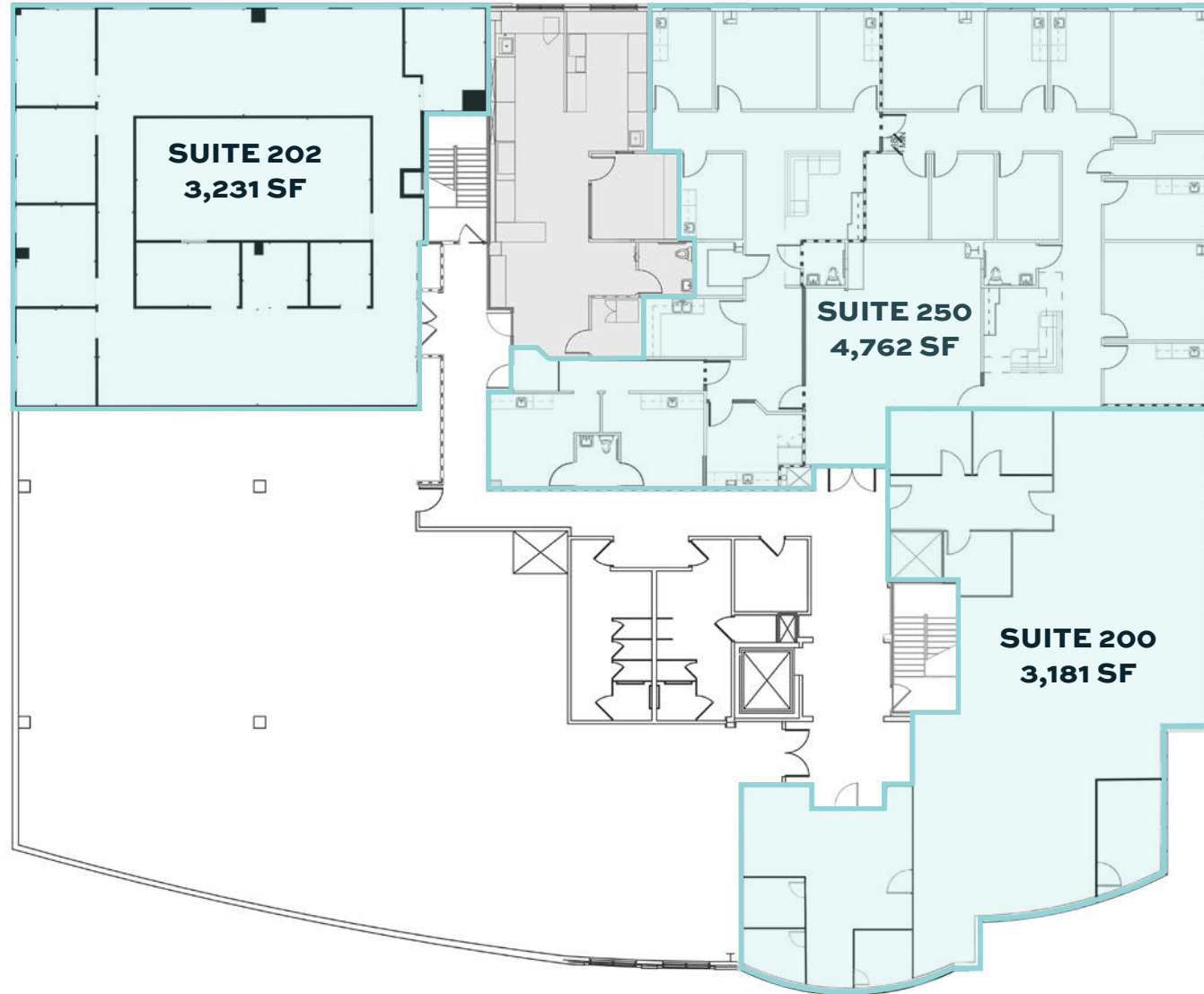
**SUITE 150**  
**8,838 SF**



**\*FLOOR PLANS ARE REPRESENTATIVE ONLY AND NOT TO SCALE.**

2417 ATRIUM DRIVE  
RALEIGH, NC 27607

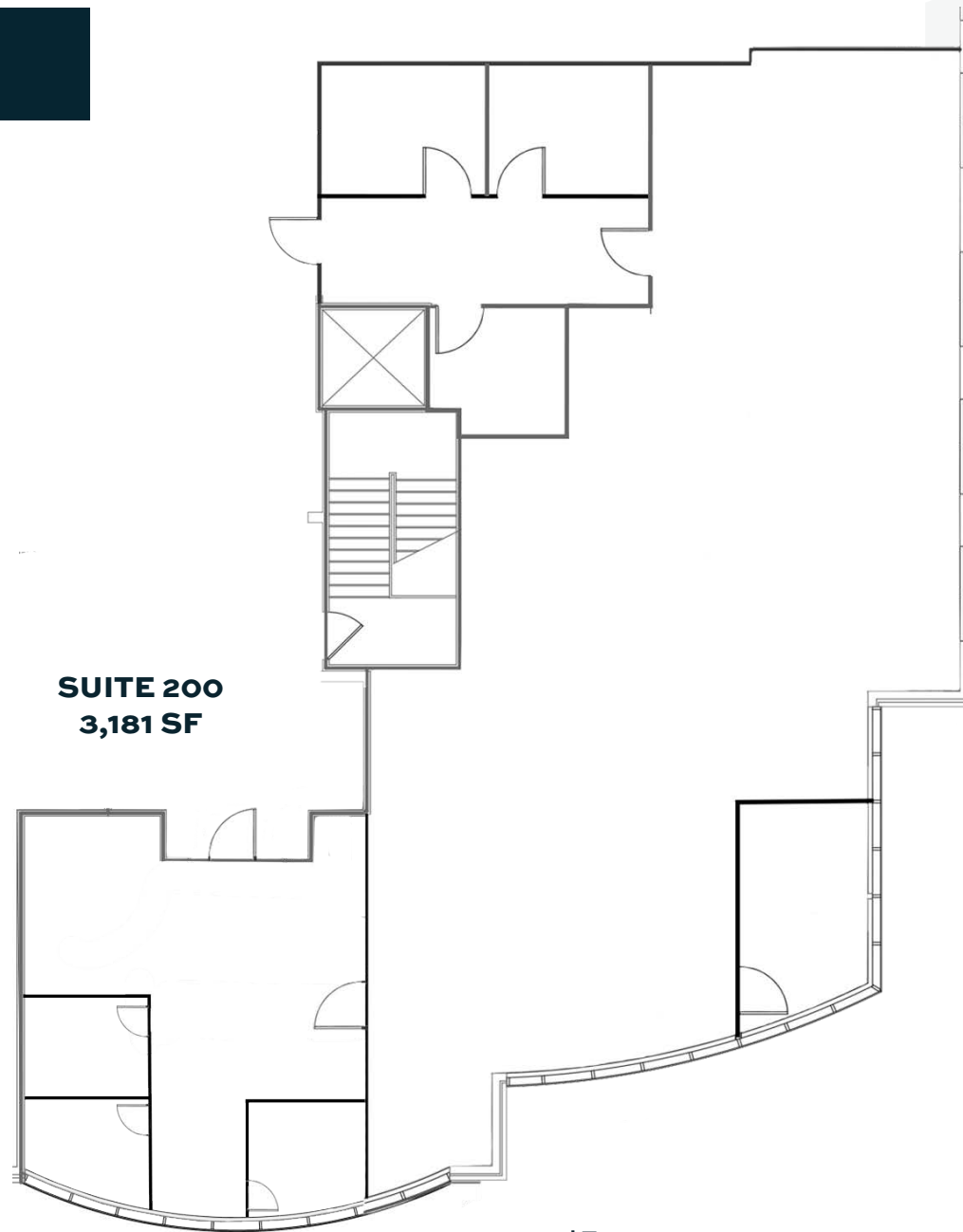
## FLOOR PLAN



**\*FLOOR PLANS ARE REPRESENTATIVE ONLY AND NOT TO SCALE.**

2417 ATRIUM DRIVE  
RALEIGH, NC 27607

# FLOOR PLAN



**SUITE 200**  
**3,181 SF**

**\*FLOOR PLANS ARE REPRESENTATIVE ONLY AND NOT TO SCALE.**

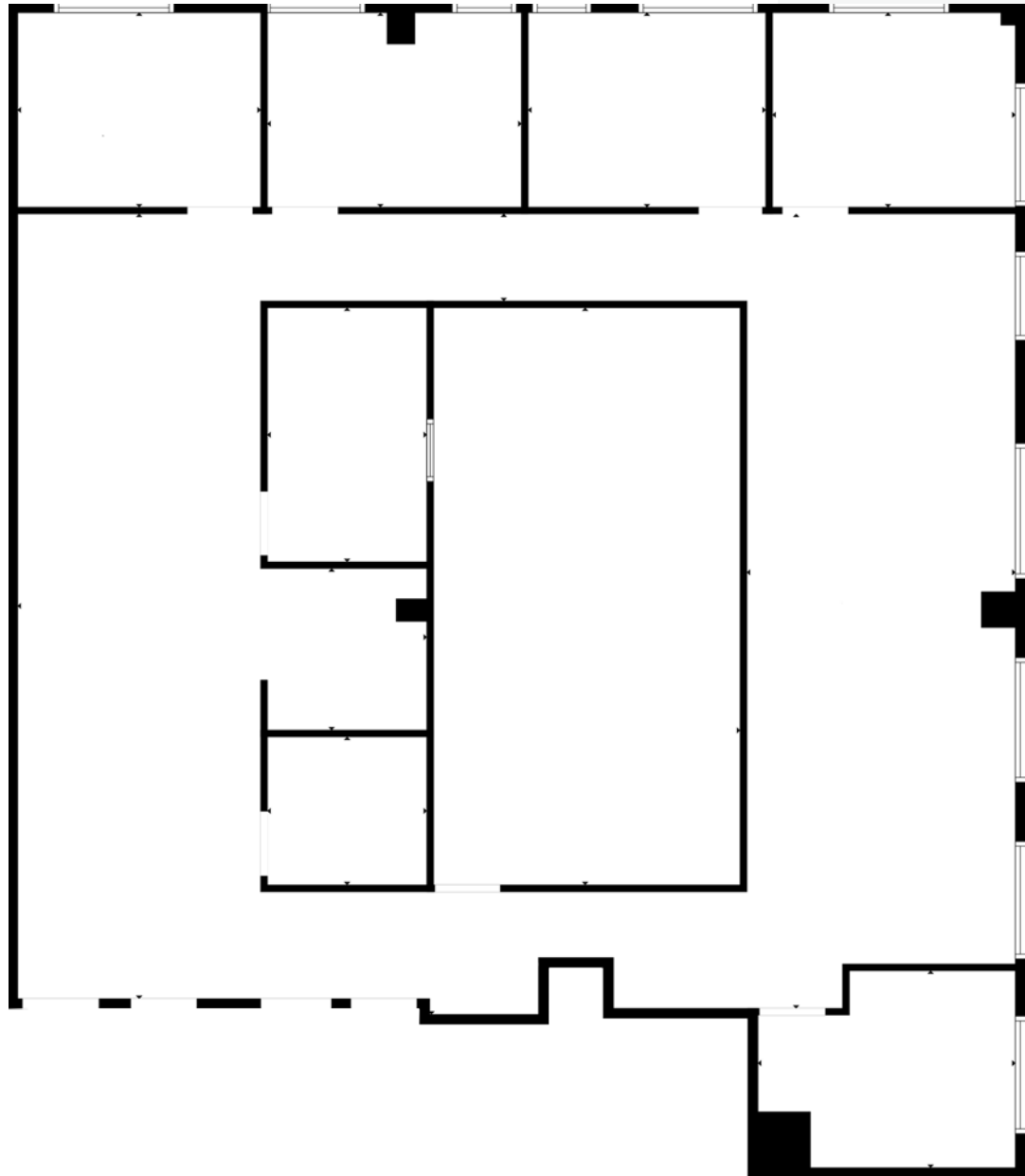


**FRED DICKENS**  
919.227.5508 DIRECT | 919.673.4775 MOBILE  
FDICKENS@TRADEMARKPROPERTIES.COM

2417 ATRIUM DRIVE  
RALEIGH, NC 27607

# FLOOR PLAN

SUITE 202  
3,231 SF

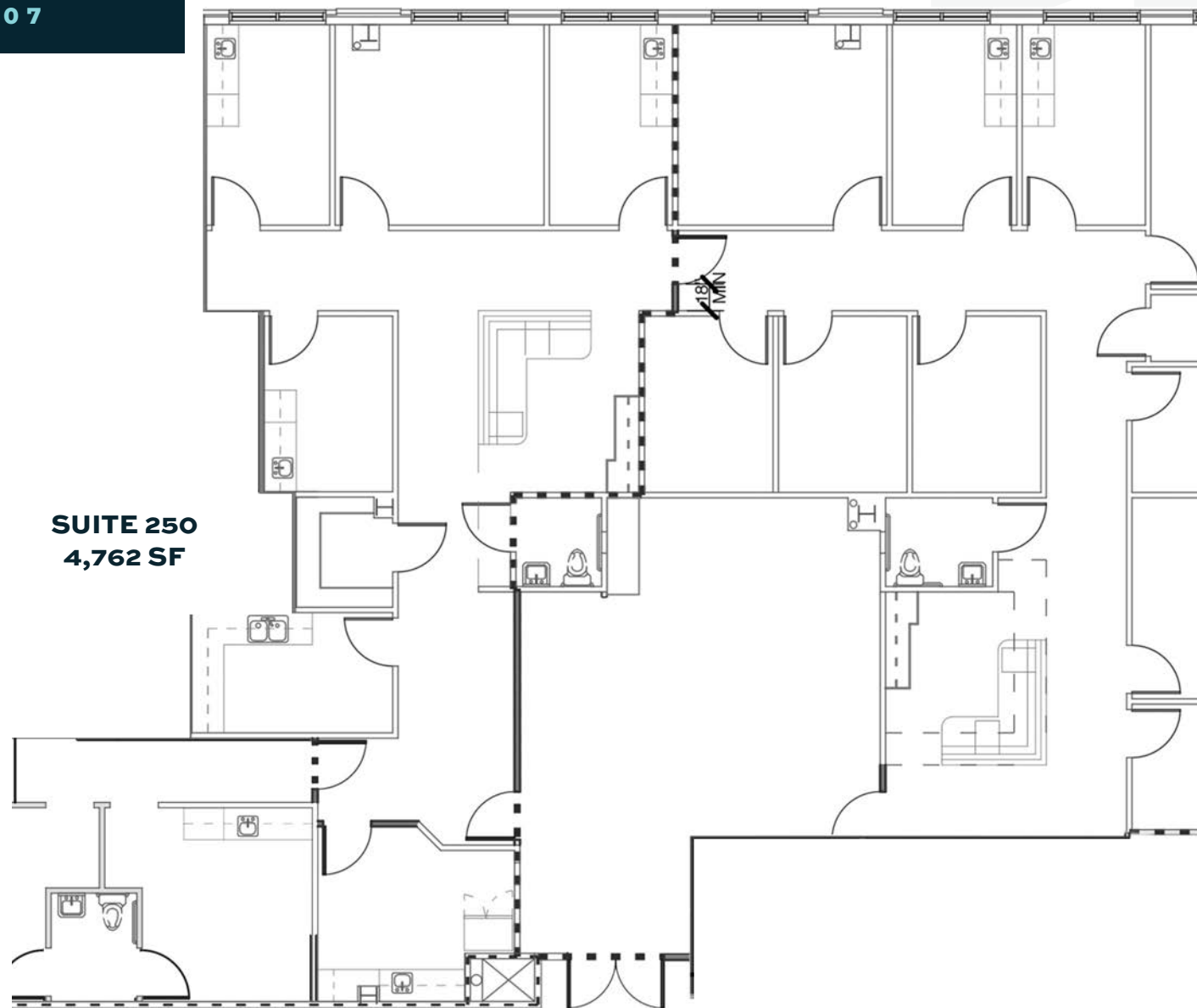


\*FLOOR PLANS ARE REPRESENTATIVE ONLY AND NOT TO SCALE.

FRED DICKENS  
919.227.5508 DIRECT | 919.673.4775 MOBILE  
FDICKENS@TRADEMARKPROPERTIES.COM

2417 ATRIUM DRIVE  
RALEIGH, NC 27607

# FLOOR PLAN





**2417 ATRIUM DRIVE  
RALEIGH, NC 27607**

## **LOCATION MAP**



**UNC REX  
HEALTHCARE**

**DOWNTOWN  
RALEIGH**

**2417 ATRIUM DRIVE**

**FRED DICKENS**  
919.227.5508 DIRECT | 919.673.4775 MOBILE  
FDICKENS@TRADEMARKPROPERTIES.COM

LISTING BROKER:

FRED DICKENS

919.227.5508 DIRECT | 919.673.4775 MOBILE  
FDICKENS@TRADEMARKPROPERTIES.COM



THIS IS OUR TRADEMARK

THE INFORMATION CONTAINED HEREIN WAS OBTAINED FROM SOURCES BELIEVED RELIABLE; HOWEVER, TRADEMARK PROPERTIES MAKES NO GUARANTEES, WARRANTIES, OR REPRESENTATIONS AS TO THE COMPLETENESS OR ACCURACY THEREOF. THE PRESENTATION OF THIS PROPERTY IS SUBMITTED SUBJECT TO ERRORS, OMISSIONS, CHANGES OF PRICE OR CONDITIONS PRIOR TO SALE OR LEASE, OR WITHDRAWAL WITHOUT NOTICE.