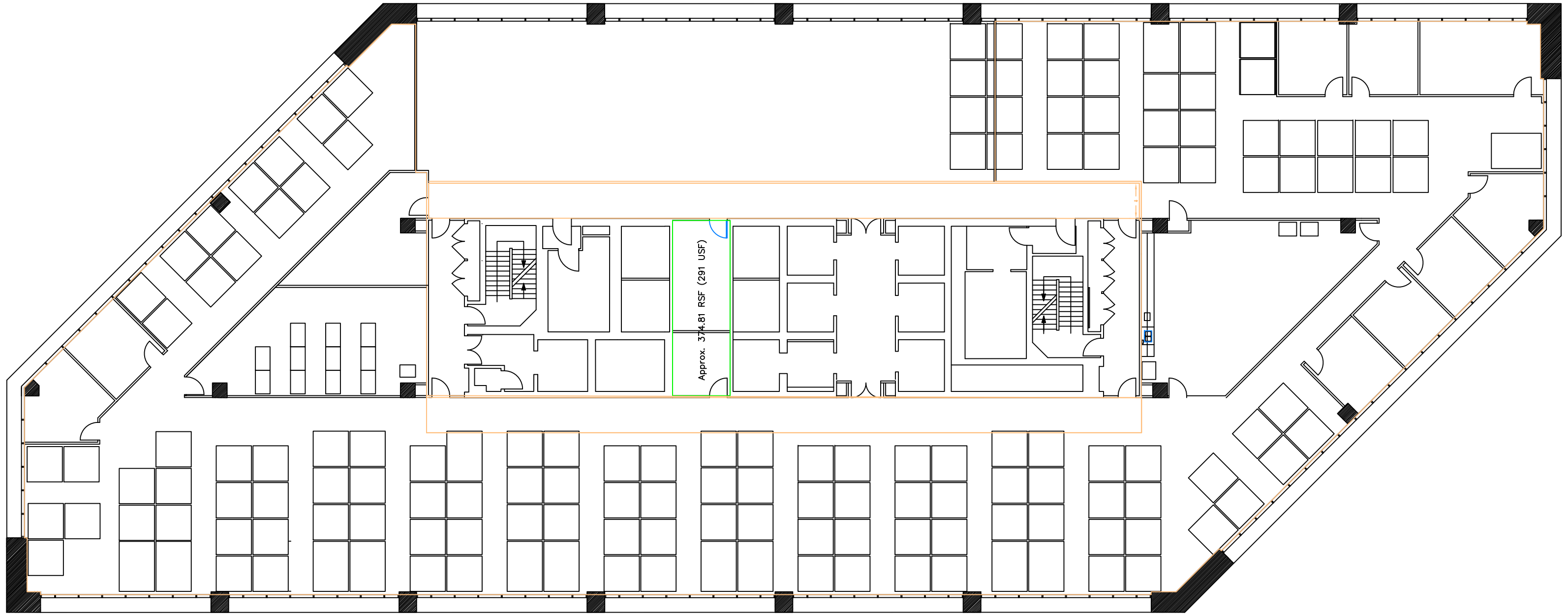


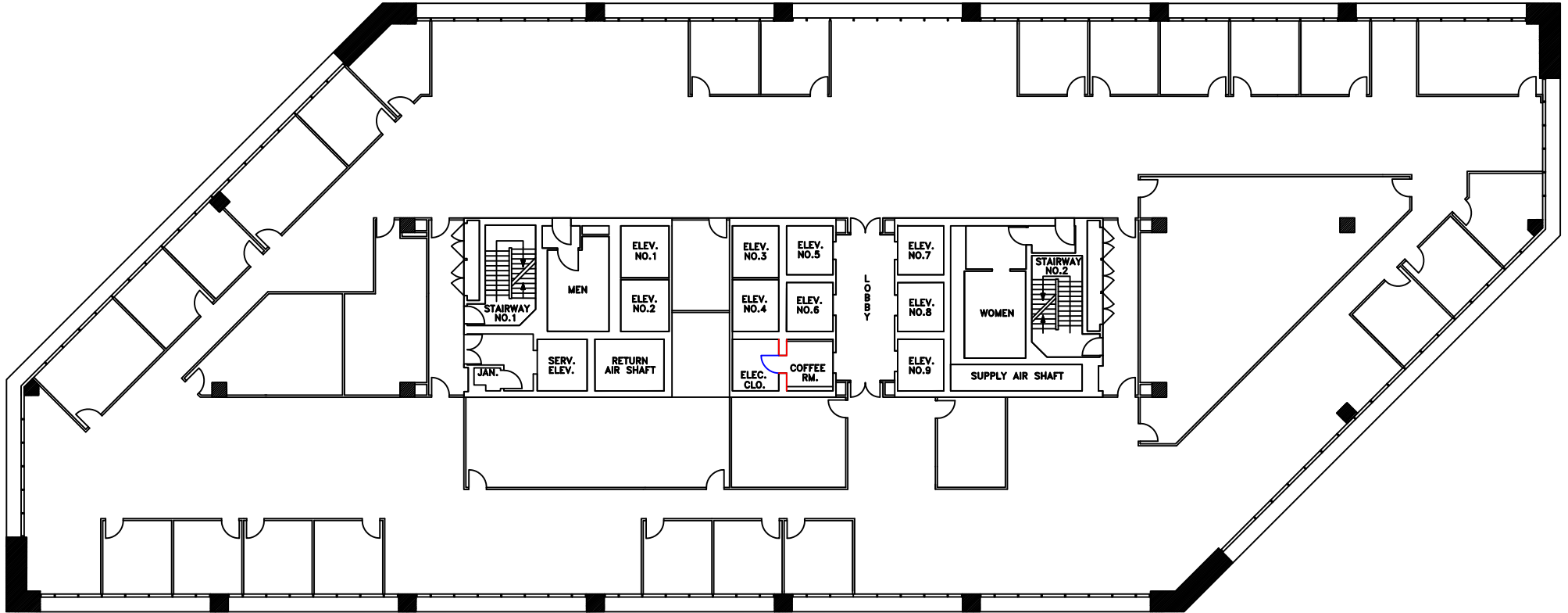


1 0 0   S T A N T O N   T O W E R





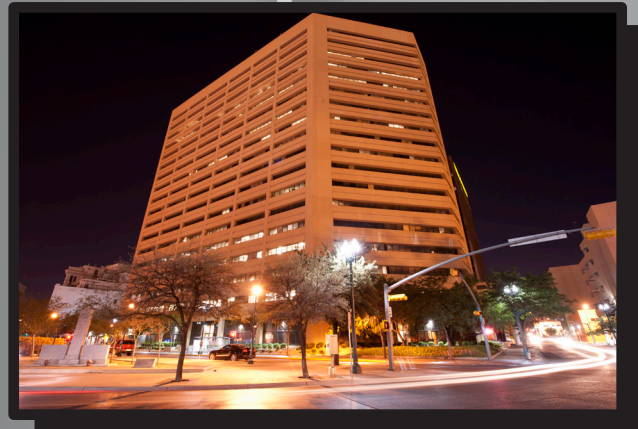
100 Stanton Tower - 3rd Floor  
Approx. 16,294 USF Available EOY  
*(cubicle location and quantity not exact)*



100 Stanton Tower - 8th Floor

# Benefits...

- 24 HOUR SECURITY CARD ACCESS
- STATE-OF-THE-ART FIBER OPTIC CONNECTIVITY
- SECURED LOADING DOCK
- COVERED PARKING AVAILABLE
- FULLY AUTOMATED FIRE CONTROL SYSTEM
- ON-SITE MANAGEMENT
- ON-SITE MAINTENANCE
- JANITORIAL SERVICE
- WALKING DISTANCE TO COURTHOUSE, CIVIC CENTER AND FEDERAL BUILDING
- EASY ACCESS TO INTERSTATE 10
- EASY ACCESS TO MEXICO PORT OF ENTRY
- FULL AND PARTIAL FLOORS AVAILABLE
- OPEN FLOOR PLANS WITH PANORAMIC VIEWS
- COMPETITIVE LEASE RATES







## 100 STANTON TOWER

A "Class A" high-rise and one of the premier buildings located in the heart of downtown El Paso.

This building has been masterfully planned to deliver state-of-the-art operating efficiencies and strategic business advantages in a sophisticated corporate setting.