

# US-45 PAD SITE

5556 US-45 ALT, WEST POINT, MS 39773



## SUMMARY

Sale Price:	Subject to Offer
Available SF:	~ 1.5 Acres
Zoning:	C-3

## PROPERTY OVERVIEW

Approximately 1.5 acres across from Wal-Mart in West Point, Clay County, Mississippi. US-45 serves as the main north/south arterial road for West Point. Adjacent tenants include Burger King, KFC, Waffle House, Popeyes, Anytime Fitness, McAlister's Deli, and more.

West Point's economy is primarily driven by manufacturing, with significant employers including Yokohama Tire Corporation, Mississippi Steel Processing, Mossy Oak, and Bryan Foods. The city is also home to the West Point Consolidated School District, which serves over 2,500 students across four schools.



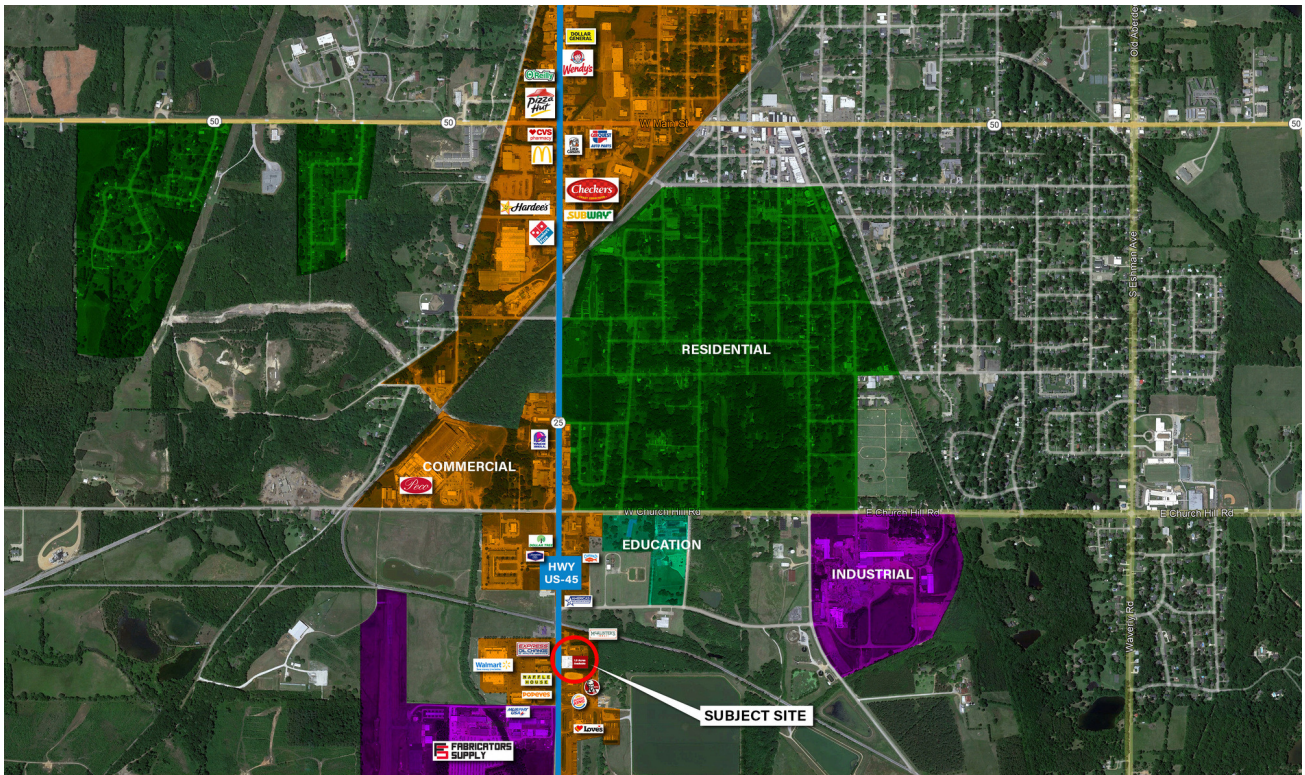
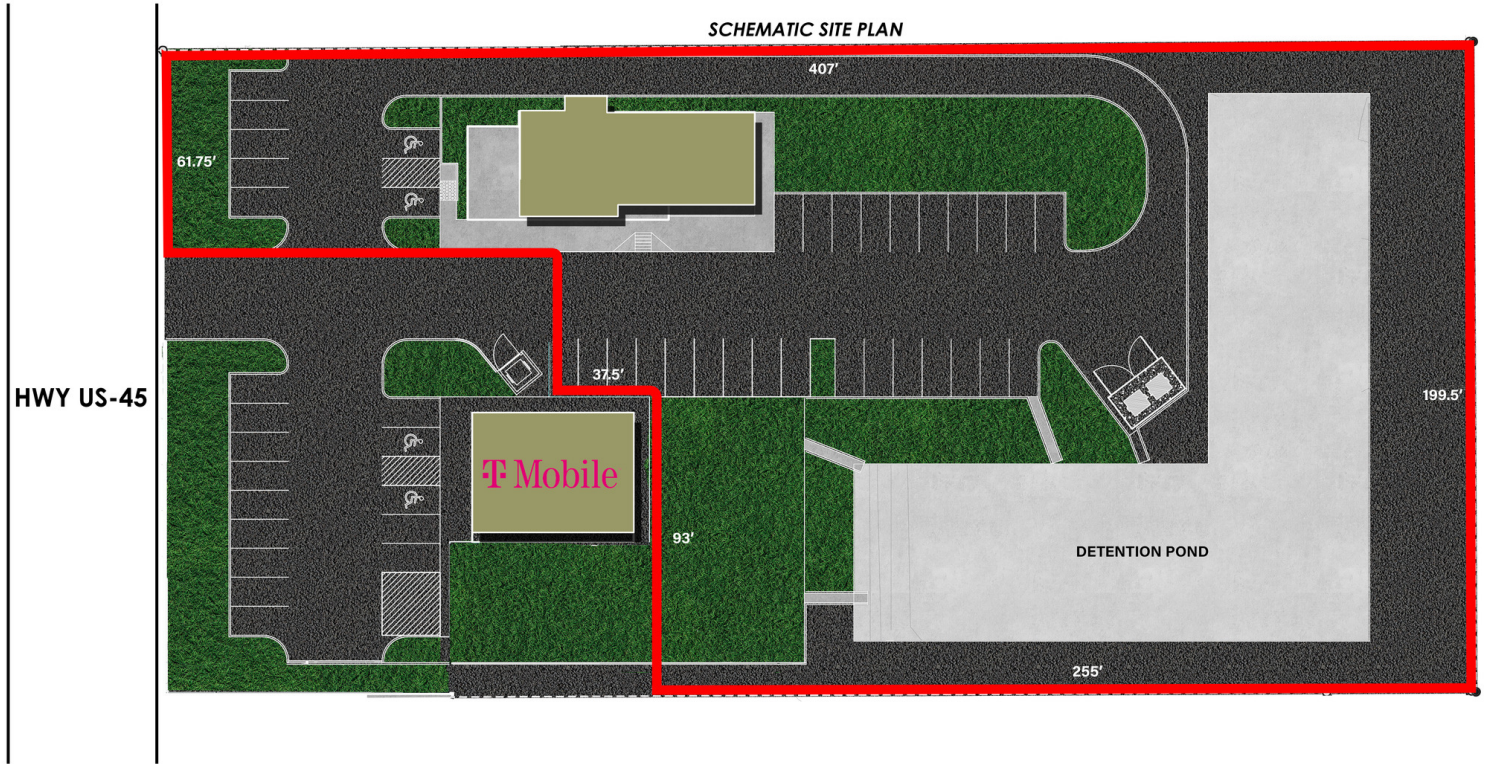
**GARY ANDREWS**

gary@gracorealestate.com  
806.745.9718  
graco.dev

**GRACO**  
REAL ESTATE DEVELOPMENT, INC.

# US-45 PAD SITE

5556 US-45 ALT, WEST POINT, MS 39773



**GARY ANDREWS**

[gary@gracorealestate.com](mailto:gary@gracorealestate.com)

806.745.9718

[graco.dev](http://graco.dev)

**GRACO**  
REAL ESTATE DEVELOPMENT, INC.