

Office Building For Lease

Offices At 33rd Street

853 E. 33rd Street, Edmond, OK 73013



Newmark Grubb
Levy Strange Beffort

Vicki Knotts
Ben Knotts

o. 405-879-4761
o. 405-879-4766

f. 405-286-6109
f. 405-463-3232

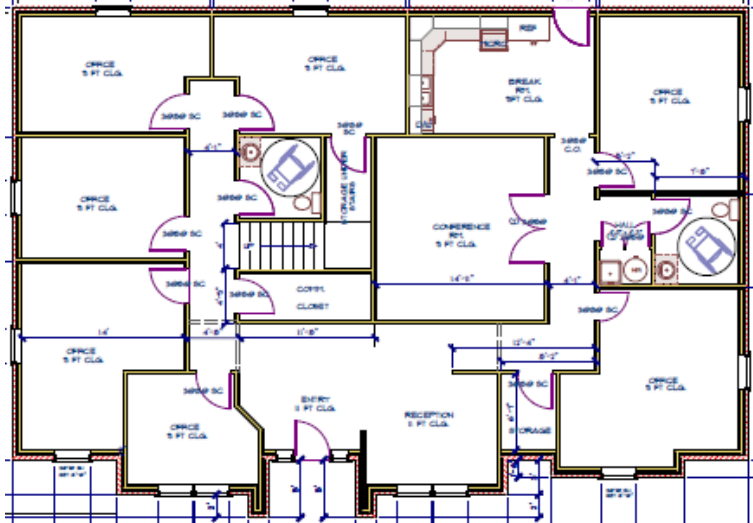
vknotts@newmarklsb.com
bknotts@newmarklsb.com

MORE INFORMATION
AVAILABLE ONLINE:
www.newmarklsb.com

Office Building For Lease

Offices At 33rd Street

853 E. 33rd Street, Edmond, OK 73013



Details

Available	3,215 SF
Lease Rate	\$18.00/SF Plus Utilities & Janitorial
Lease Type	Modified Gross
Lease Term	3 - 5 Years

Property Overview

Offices At 33rd Street is located in a quiet setting with an abundance of lush trees and landscaping between S. Boulevard and S. Bryant. Broadway Extension is 1 1/2 miles west and I-35 provides north/south bound access 2 1/2 miles east. The immediate area offers banks, fast food, retail and restaurants.

Property Highlights

- 7 Offices
- Large Reception Area & Conference Room
- Private Restroom & Breakroom
- Signage Available On Building
- Quiet Landscaped Setting
- Drive-Up Parking
- Security System
- Access to Broadway Extension & I-35

Newmark Grubb

Levy Strange Beffort

www.newmarklsb.com

OKLAHOMA CITY

204 N. Robinson, Suite 700, Oklahoma City, OK 73102

405-840-1500

TULSA

110 W. 7th Street, Suite 2600, Tulsa, OK 74119

918-481-3200

The information contained herein was obtained from sources believed reliable; however, Newmark Grubb Levy Strange Beffort makes no guarantees, warranties or representations as to the completeness or accuracy thereof. The presentation of this property is submitted subject to errors, omissions, change of price or conditions prior to sale or lease, or withdrawal without notice. Independently Owned and Operated.