

9400 SOUTH 300 WEST

Sandy | Utah



FOR SALE

BUILD TO SUIT

Property Highlights

- Lot 2: 2.79 Acres
- Zoning: RD
- 797' of Freeway Frontage
- I-15 Daily Traffic Count: 150,155 AADT
- Permitted Land Use:
 - Business and Financial Services
 - Laboratories, Research, Development & Testing
 - Medical and Health Care
 - General Office, Administration or Corporate
- Conditional Land Use:
 - Hotel/Motel
 - Light Industrial
 - Mixed Use - Office / Residential
 - Research Park
 - Schools (General, Private, or Commercial)

Demographics

	1 Mile	3 Miles	5 Miles
Population			
2012 Estimated	7,097	105,782	298,865
2017 Projected	7,527	112,760	319,363
Households			
2012 Estimated	2,805	35,836	97,537
2017 Projected	3,004	38,498	104,817
Income			
2012 Avg. HH	\$50,060	\$70,587	\$79,082
2012 Med. HH	\$40,775	\$57,189	\$64,929
2012 Per Capita	\$19,457	\$24,020	\$25,952

Contact

Luke Burbank
direct 801.578.5522
lburbank@ngacres.com

Zach Anderson
direct 801.578.5501
zanderson@ngacres.com

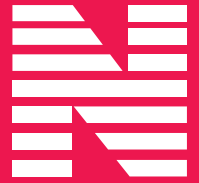
Kelsie Akiyama
direct 801.578.5504
kakiyama@ngacres.com

Newmark Grubb
ACRES

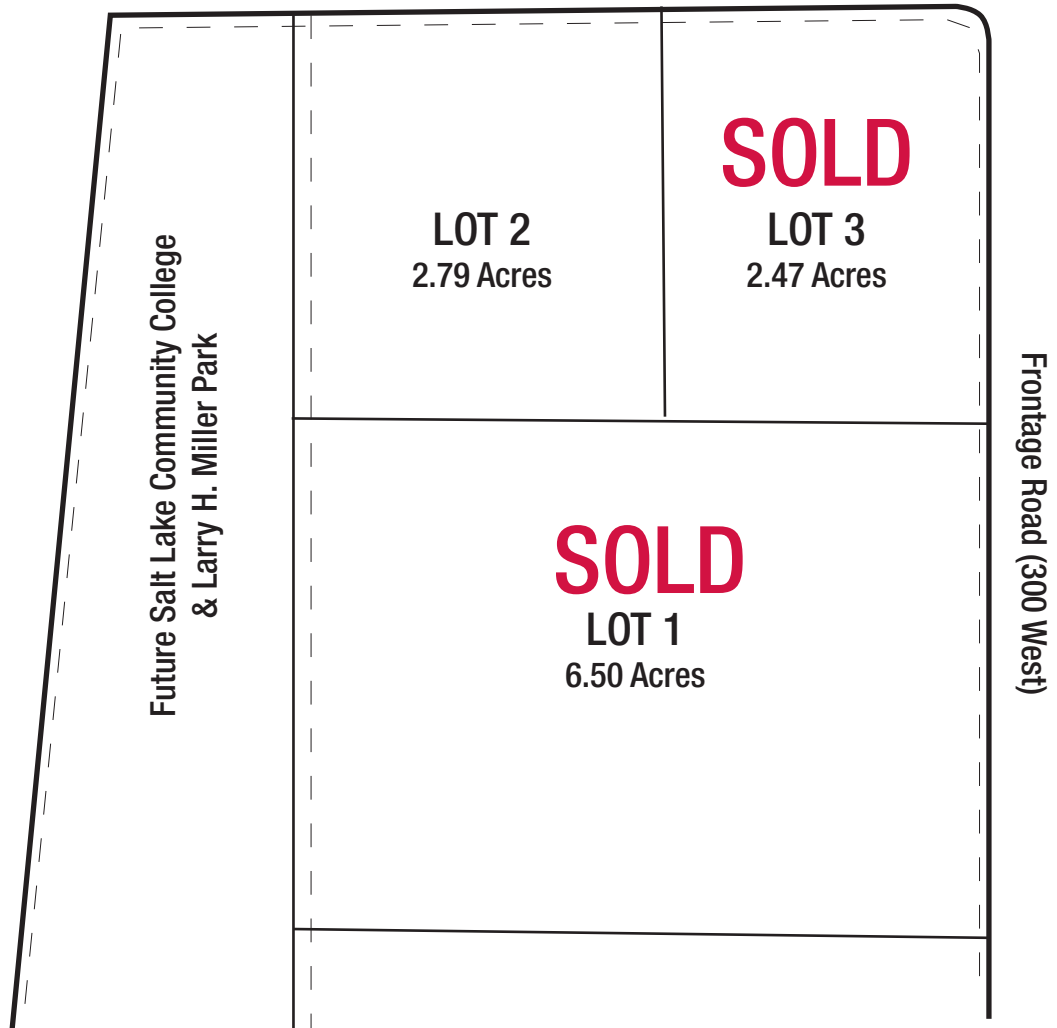
376 East 400 South, Suite 120 | Salt Lake City, Utah 84111
Office 801.578.5555 | Fax 801.578.5500
www.ngacres.com

9400 SOUTH 300 WEST

Sandy | Utah



9400 South



Newmark Grubb
ACRES

376 East 400 South, Suite 120 | Salt Lake City, Utah 84111
Office 801.578.5555 | Fax 801.578.5500

www.ngacres.com