

PROPERTY FEATURES

- 3,179 SF Office Space
- 2 Bathrooms
- 7 Parking Spaces (front)
- Located 100 ft south of the intersection of Marietta and Howell Mill Rd, directly adjacent to Bartaco
- Open Floor Plan
- Common Area Charges: \$1.89 (including water)
- Annual Taxes: \$6,600
- Rate: \$20.00 NNN



PROPERTY DESCRIPTION

955 Marietta Street NW is a one story office space with two entrances. The open floor plan offers 9ft ceilings and is perfect for a tech company, advertising agency, etc. The Westside location offers very good visibility and is close to Georgia Tech.

OPPORTUNITY

Tenant improvement allowance available based on financials.



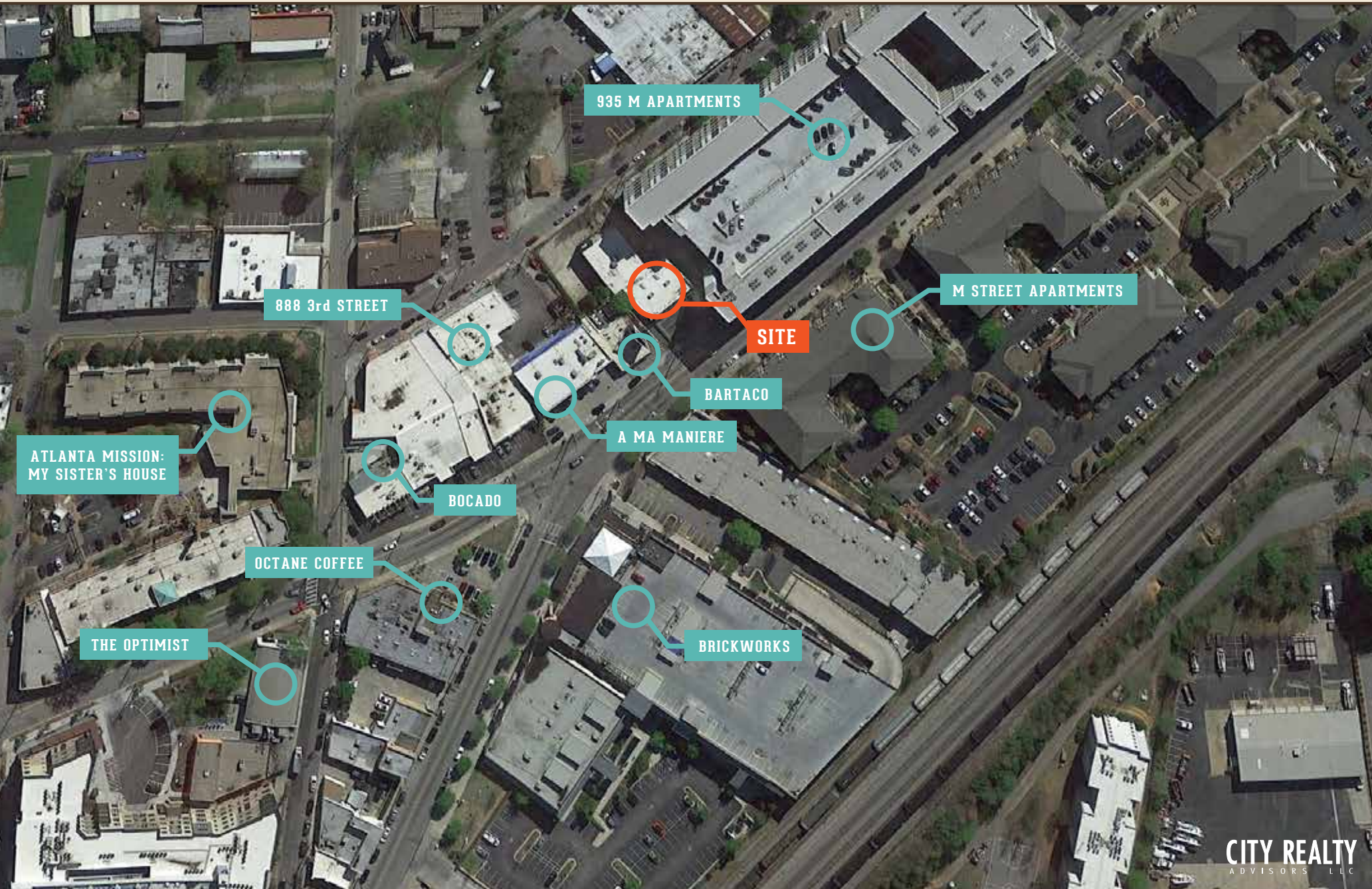
CITYREALTY.NET

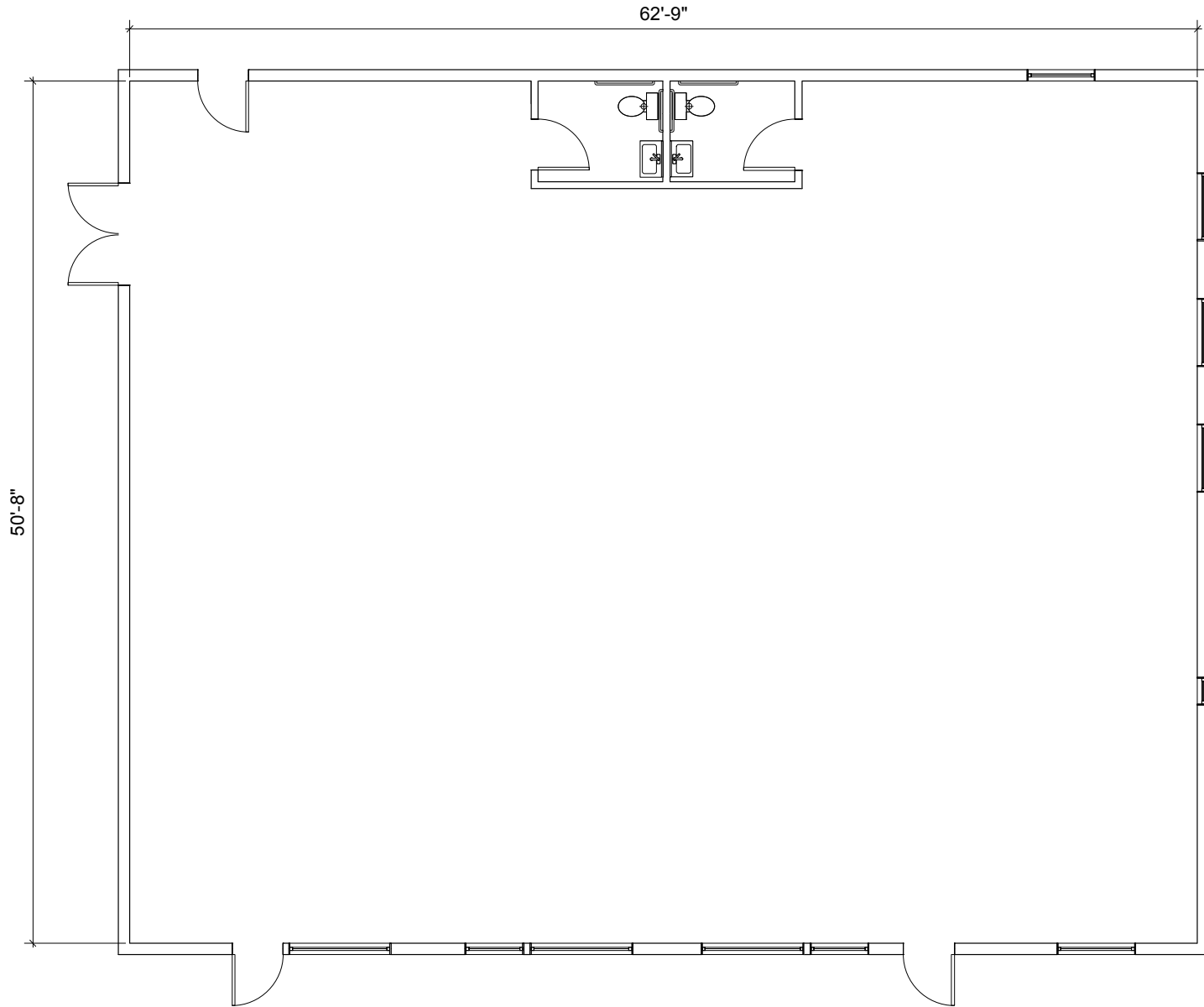
THINK INTOWN. THINK CITY.

955 MARIETTA STREET NW

Atlanta, GA 30318

CONTEXT AREA MAP





NOTE:

TOTAL SQUARE FOOTAGE: 3179 SF

1 FLOOR PLAN 955 MARIETTA ATLANTA, GA
NTS

