

Pleasant View Industrial

1453 Stone Field Way
Ogden, UT 84404

INDUSTRIAL
FOR LEASE



PROPERTY INFORMATION

- > \$.60 NNN psf warehouse, \$1.05 NNN office
- > 6,600 total square feet
1,200 sf office and 5,400 sf warehouse
- > New Construction
- > 1 Grade level door
- > Storage yard
- > 21 foot clear height



NAIPremier

COMMERCIAL REAL ESTATE SERVICES, WORLDWIDE

7455 Union Park Avenue Ste. A,
Midvale, Utah 84047

801 255 3333 | naipremier.com

John Blatter

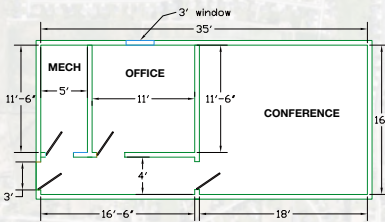
d 801 619 2725

c 801 822 6125

jblatter@naipremier.com



Upstairs Floorplan



Main Level Floorplan

