



DDI Commercial, Inc.

7200 West 132nd Street, Overland Park, KS 66213 913-685-4100

## 130 N. Cherry St., Olathe, KS



**Directly across from the new  
Johnson County Courthouse**

**Locally owned and managed**

**Larger suite divisible**

**Parking adjacent to building**

**Limited reserved spaces available**

### **Current Suite Availability**

**1,907 square feet—2nd Floor**

**2,500—3,000 square feet on top floor**

*Kathy Woodward, SIOR*

**DDI COMMERCIAL, INC.**

7200 West 132nd Street

Suite 300

Overland Park, KS 66213

P: 913.685.4100

F: 913.685.1232

[Elaine@DDIRealty.com](mailto:Elaine@DDIRealty.com)

[KathyW@DDIRealty.com](mailto:KathyW@DDIRealty.com)

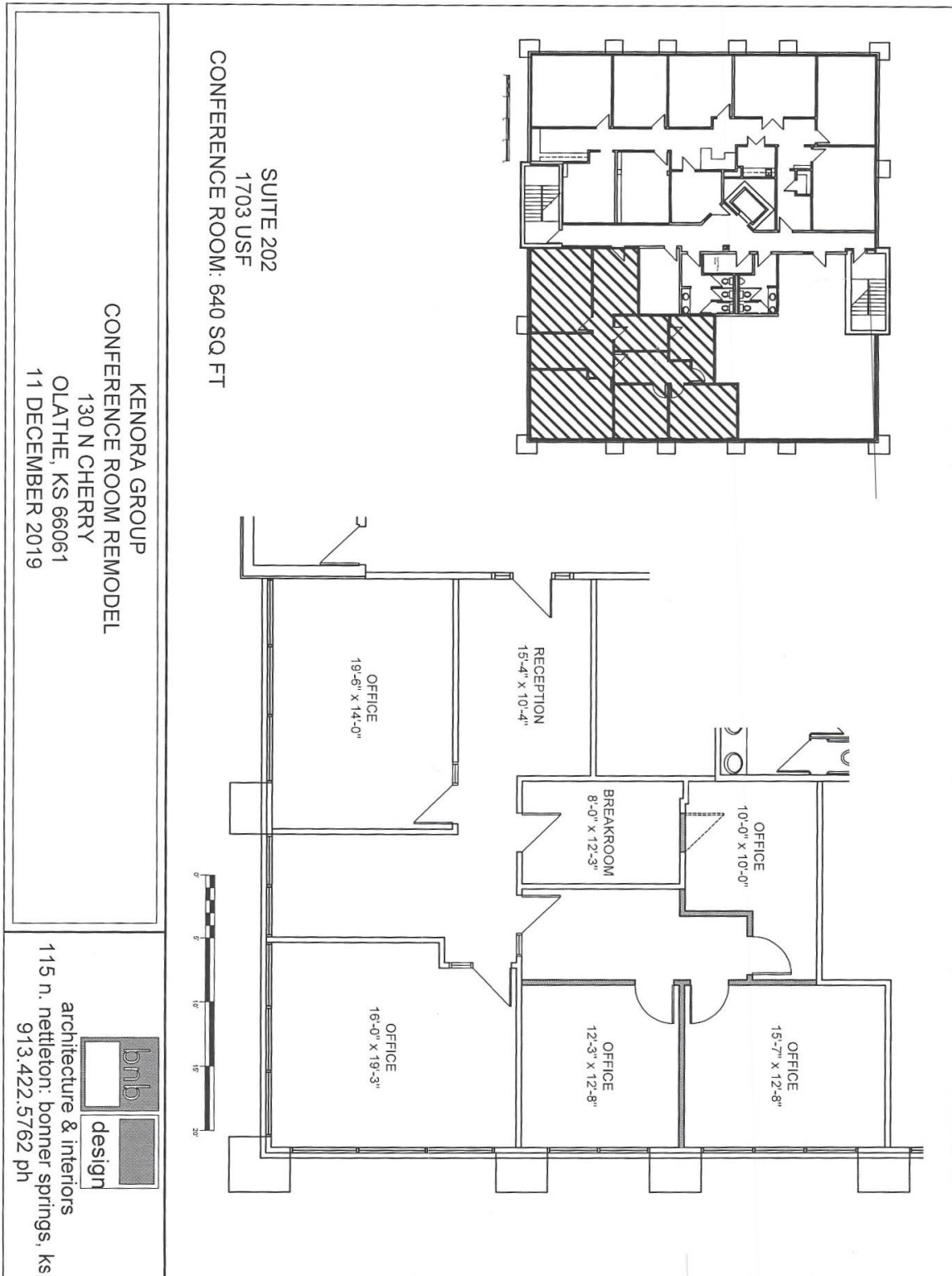
[DDICommercial@DDIRealty.com](mailto:DDICommercial@DDIRealty.com)

[www.SouthcreekOfficePark.com](http://www.SouthcreekOfficePark.com)



DDI Commercial, Inc.

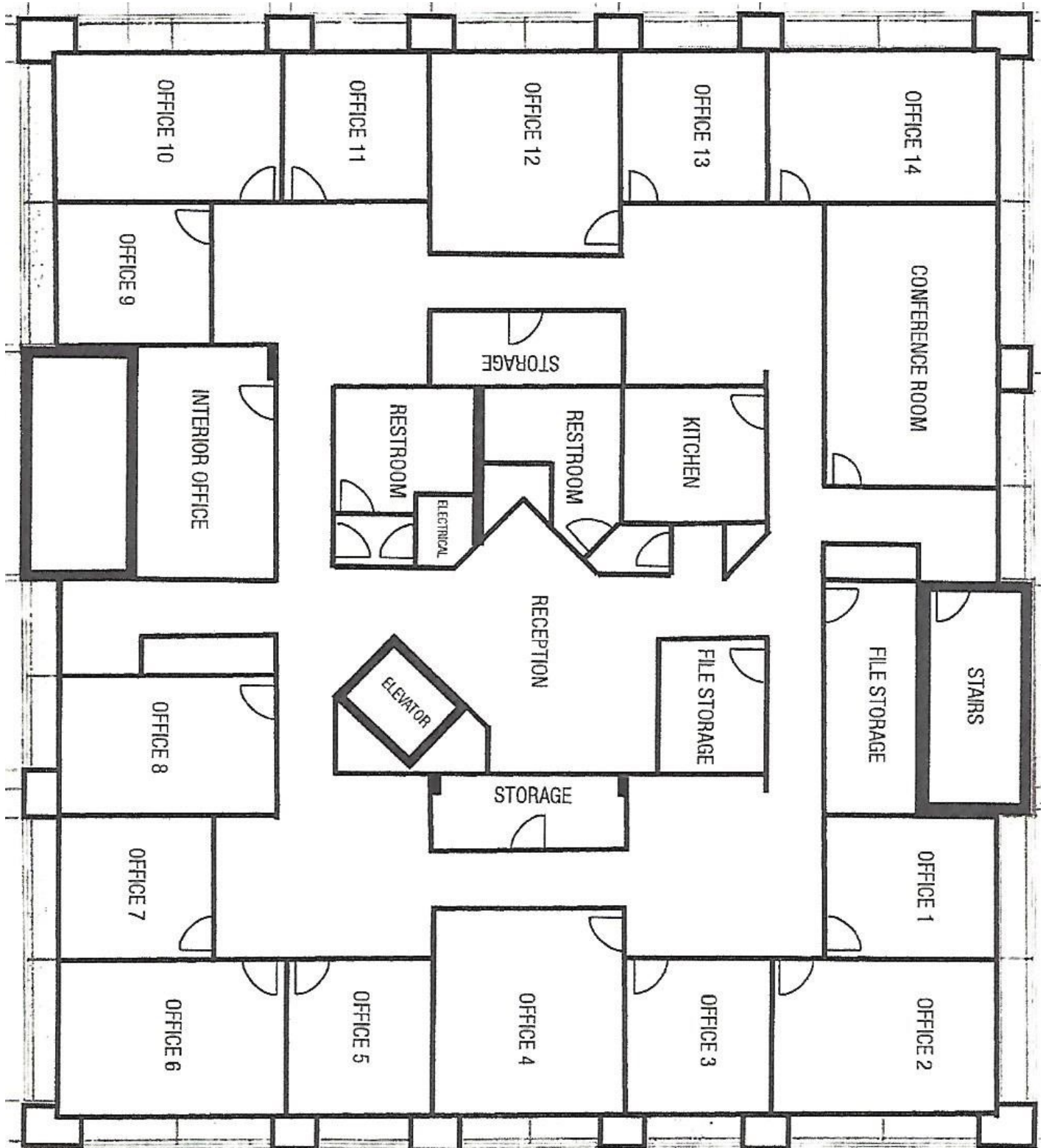
7200 West 132nd Street, Overland Park, KS 66213 913-685-4100





DDI Commercial, Inc.

7200 West 132nd Street, Overland Park, KS 66213 913-685-4100





DDI Commercial, Inc.

7200 West 132nd Street, Overland Park, KS 66213 913-685-4100

