

AVAILABLE FOR LEASE
PROFESSIONAL OFFICE SPACE

2930-3010 N. FRESNO STREET
FRESNO, CA

NEWMARK
PEARSON COMMERCIAL

Phil Souza
Senior Vice President - Office Division
t 559-447-6283
psouza@pearsonrealty.com
CA RE Lic. #00853867

Nick Sorensen
Vice President - Office Division
t 559-447-6240
nsorensen@pearsonrealty.com
CA RE Lic. #02081137

Independently Owned and Operated | Corporate License #00020875 | newmarkpearson.com

FRESNO OFFICE: 7480 N. Palm Ave. #101, Fresno, CA 93711, t 559-432-6200 | **VISALIA OFFICE:** 3447 S. Demaree St., Visalia, CA 93277, t 559-732-7300

The distributor of this communication is performing acts for which a real estate license is required. The information contained herein has been obtained from sources deemed reliable but has not been verified and no guarantee, warranty or representation, either express or implied, is made with respect to such information. Terms of sale or lease and availability are subject to change or withdrawal without notice.

2930-3010 N. FRESNO STREET
FRESNO, CA

PROPERTY
INFORMATION

Availability:	2936 N. Fresno Street 780± SF
Lease Rate:	\$1.00, Modified Gross
Parking Description:	Surface 4:1 Ratio
Zoning:	C-P
Highlight:	All new flooring and lighting

PROPERTY DESCRIPTION

This garden style office houses both medical and general office-use tenants. Great visibility on N. Fresno Street. All new flooring and lighting.

This complex is completely gated with a bus stop.

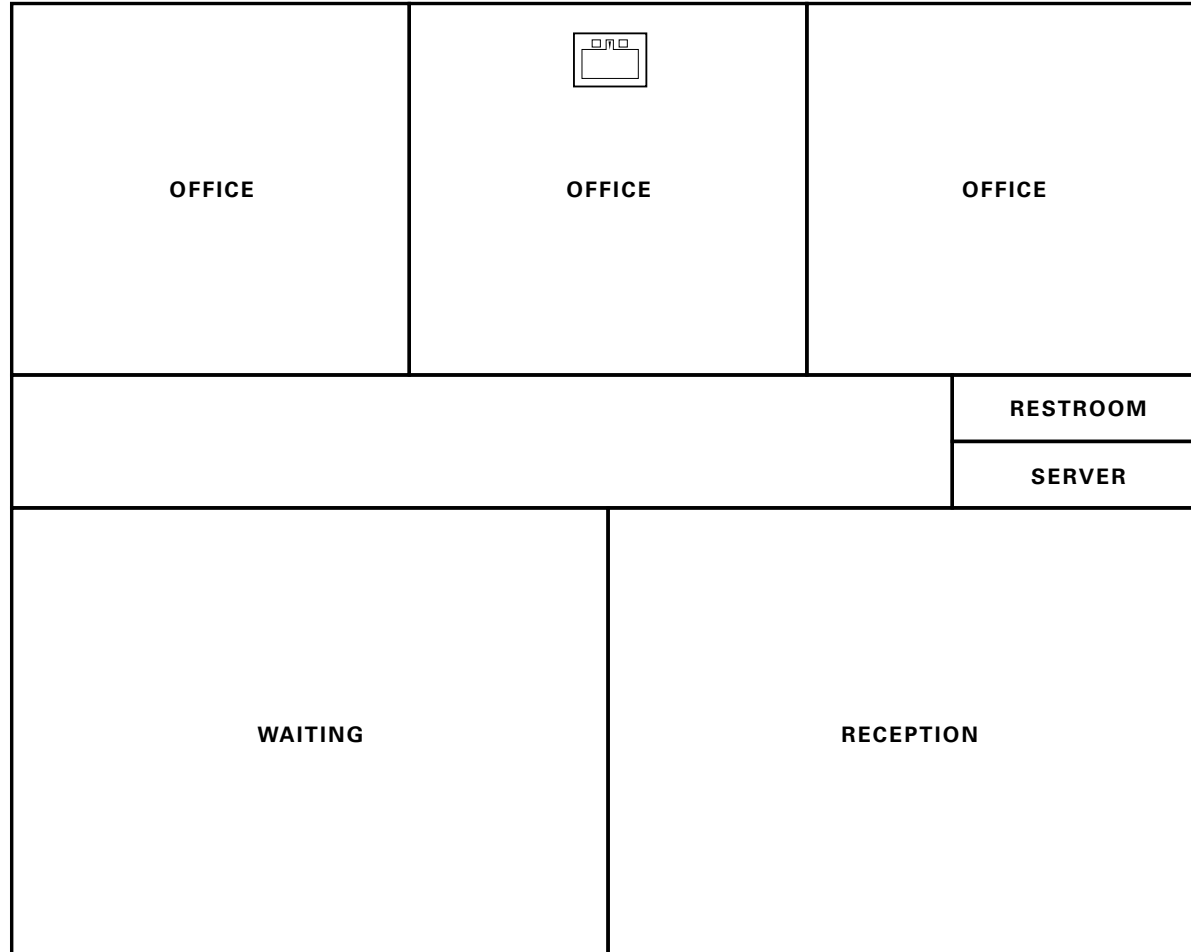
LOCATION DESCRIPTION

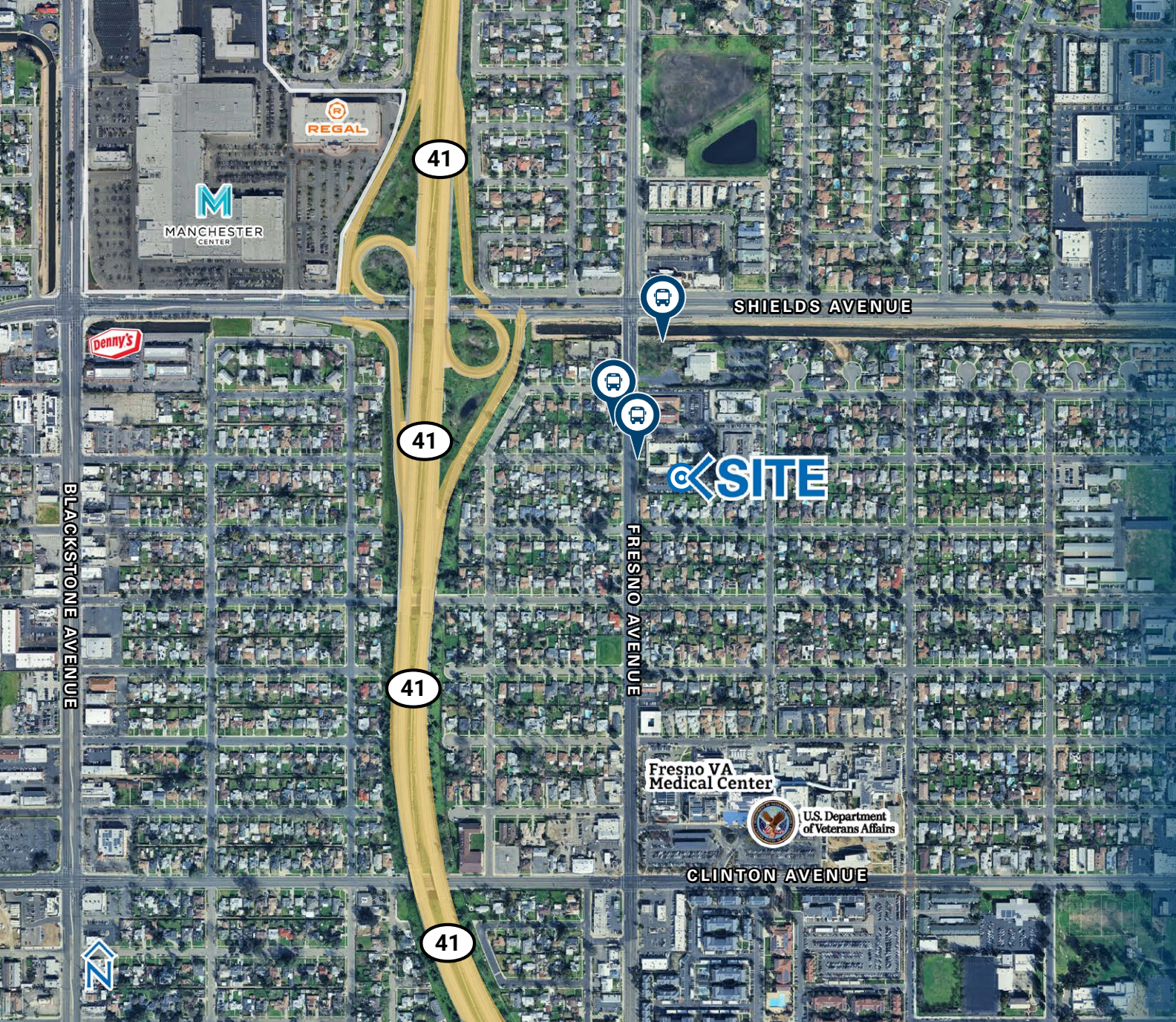
Located on the northeast corner of N. Fresno Street and E. Michigan Avenue in Fresno, California

HIGHLIGHTS

- Dentist
- Doctors
- LabCorp
- American Ambulance
- Therapy Group







For information, please contact:

Phil Souza

Senior Vice President - Office Division

t 559-447-6283

psouza@pearsonrealty.com

CA RE Lic. #00853867

Nick Sorensen

Vice President - Office Division

t 559-447-6240

nsorensen@pearsonrealty.com

CA RE Lic. #02081137

NEWMARK
PEARSON COMMERCIAL

Independently Owned and Operated
Corporate License #00020875
newmarkpearson.com

FRESNO OFFICE
7480 N. Palm Ave. #101
Fresno, CA 93711
t 559-432-6200

VISALIA OFFICE
3447 S. Demaree St.
Visalia, CA 93277
t 559-732-7300

The distributor of this communication is performing acts for which a real estate license is required. The information contained herein has been obtained from sources deemed reliable but has not been verified and no guarantee, warranty or representation, either express or implied, is made with respect to such information. Terms of sale or lease and availability are subject to change or withdrawal without notice.