

FOR LEASE

6 ALIE STREET – 5th FLOOR

4,412 sq ft

GRADE A OFFICE ACCOMODATION

London, E1



CGI renders

A UNIQUE LEASING OPPORTUNITY **ROYAL COLLEGE OF PATHOLOGISTS**

6 Alie Street is a brand new building owned and built by the Royal College of Pathologists as a flagship headquarters due for completion January 2019.

The fifth floor is available by way of a new lease direct from the Landlord and offers high quality CAT A space with stunning views across East London. The building benefits from a number of high quality amenities including a 200 person auditorium, terraced meeting rooms and brand new cycle and shower facilities.



CONTACT US

TOM MEIJER

+ 44 7540 595 379
+ 44 20 7182 2778
Tom.meijer@cbre.com

FELICITY RANGER

+44 7341 079 876
+44 20 7182 2177
Felicity.ranger@cbre.com

www.cbre.co.uk

CBRE

FOR LEASE 6 ALIE STREET – 5th FLOOR

4,412 sq ft
GRADE A OFFICE SPACE
London, E1



TERMS

- + Lease: A new Lease direct from the Landlord
- + Quoting rent: £56.50 per sq ft pa
- + Rates (2018/19): £TBC psf pa
- + Service charge: £TBC psf p.a.



AVAILABLE SPACE

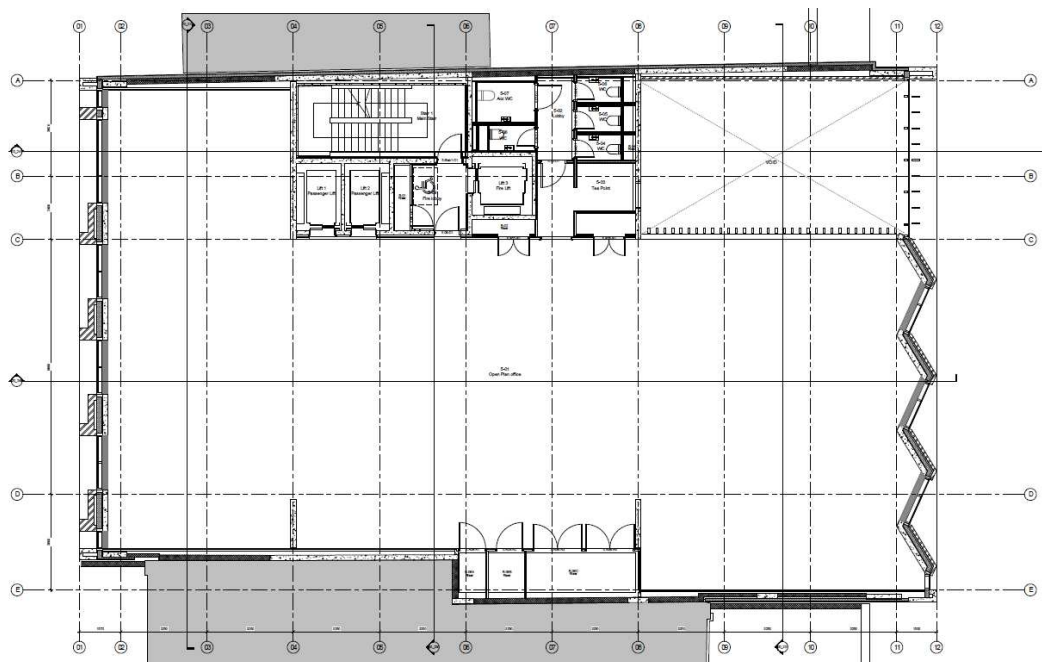
Level	sq ft
5	4,412

LOCATION

- + 3 minutes to Aldgate East Station
- + 4 minutes to Aldgate Station
- + 8 minutes to Tower Hill Station

SPECIFICATION

- + Comprehensively redeveloped HQ building
- + 450mm raised floors
- + New LED lighting
- + 3 x brand new passenger lifts
- + Cycle parking and showers
- + Meeting rooms & auditorium
- + Occupational density up to 1:8 sqm



CBRE Limited on their behalf and for the Vendors or Lessors of this property whose Agents' they are, give notice that:

1. These particulars are set out as a general outline only for guidance to intending Purchasers or Lessees, and do not constitute any part of an offer or contract.
2. Details are given without any responsibility and any intending Purchasers, Lessees or Third Parties should not rely on them as statements or representations of fact, but must satisfy themselves by inspection or otherwise as to the correctness of each of them.
3. No person in the employment of CBRE Limited has any authority to make any representation or warranty whatsoever in relation to this property.
4. Unless otherwise stated, all prices and rents are quoted exclusive of VAT. Subject to contract, November 2018