

Full Building Sublease | 14,666 SF

# 424 Townsend St.



**John Diepenbrock**

Lic. 01911627  
916-296-7185  
John@raise.work

**Chase Larscheid**

Lic. 02035834  
415-713-2232  
Chase@raise.work

[Take a Virtual Tour](#) 

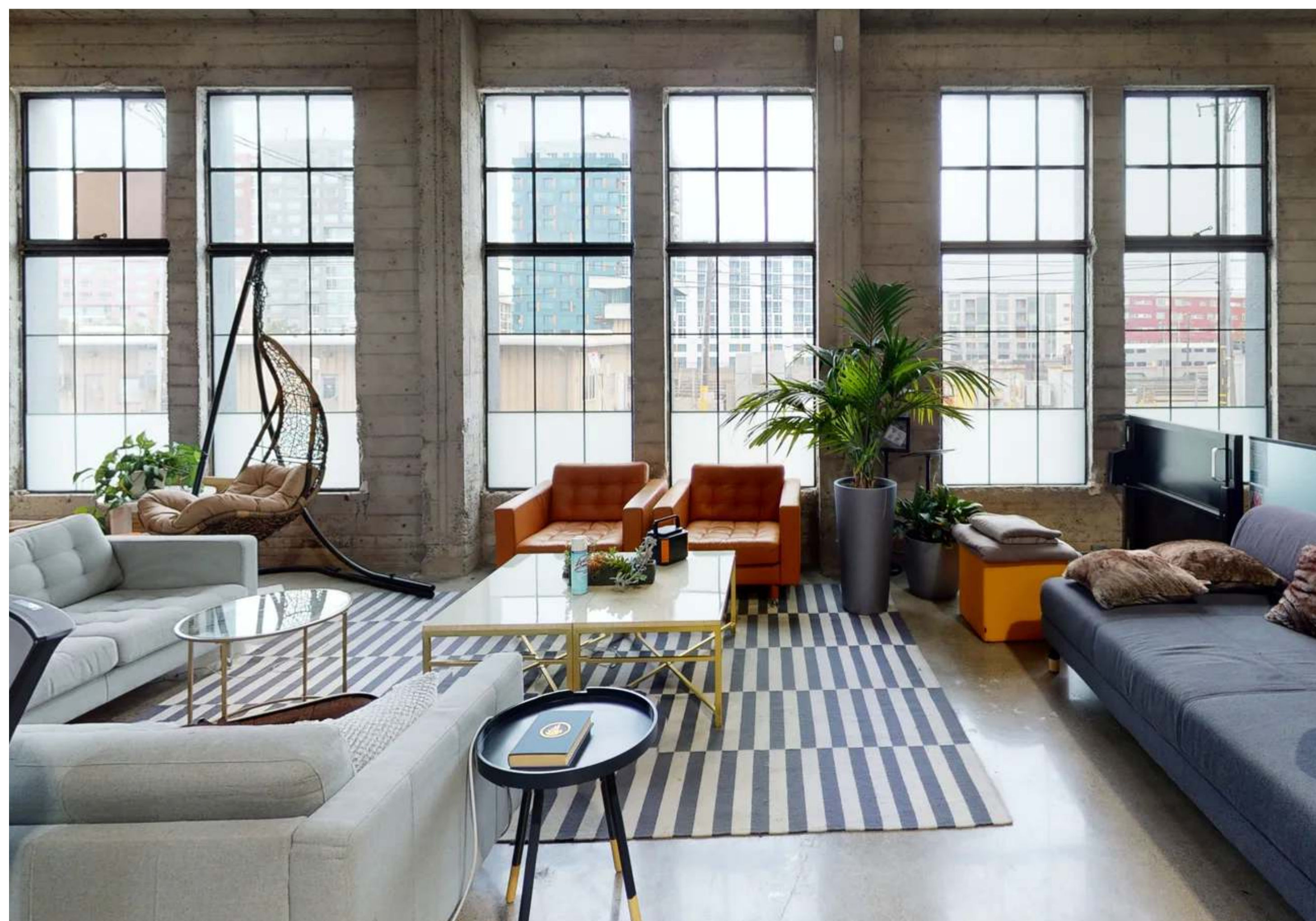


## Full Building Sublease 424 Townsend St.

Sq. Feet	Availability	Rate	Term
14,666 SF	Q1 2023	Negotiable	Through December 31, 2024

- 
- Features**
- Full Building Opportunity across from Caltrain
  - Drive in roll up door access on Bluxome Street
  - Ten Conferences rooms of various sizes including one large boardroom
  - Large Kitchen and All Hands Area
  - Furniture Potentially Available
- 





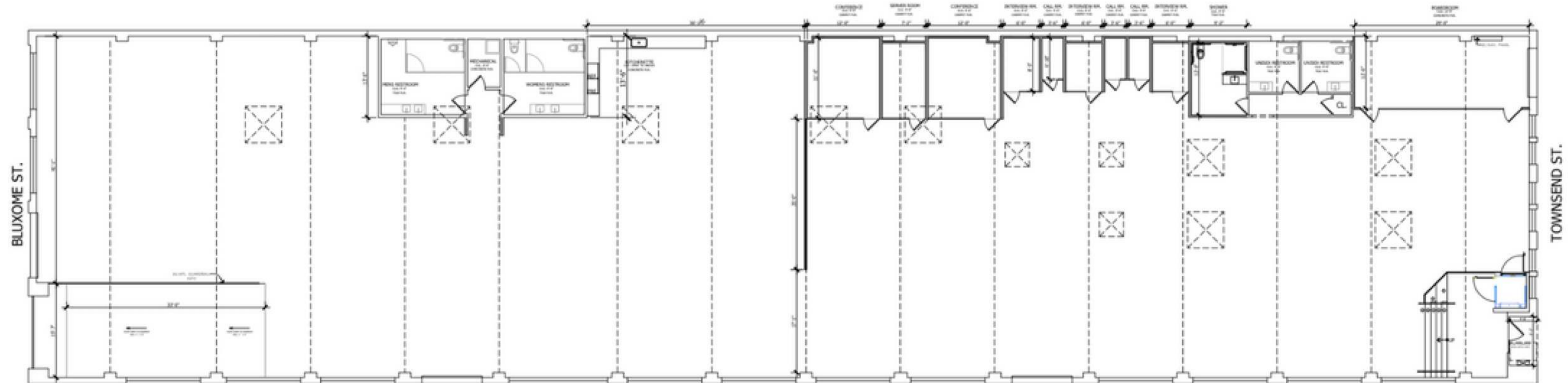
# 424 Townsend St.

Sq. Feet  
14,666 SF

Availability  
12/1/2022

Rate  
Negotiable

Term  
Through December 31, 2024





John Diepenbrock

Lic. 01911627  
916-296-7185  
John@raise.work

Chase Larscheid

Lic. 02035834  
415-713-2232  
Chase@raise.work

[Take a Virtual Tour](#) 

