

**BUILDING FOR LEASE - FORMER BANK BRANCH**  
**655 MAIN STREET - CHATHAM, MA**  
**3,449 SF PLUS FULL BASEMENT w/ DRIVE THRU**



Find Your Place.



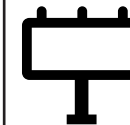
**3,449 SF Plus  
Full Basement**



**10 Parking Spaces  
Municipal lot within  
walking distance**



**Available 5/1/23**



**Monument signage  
visible from  
Main Street / Route 28**



**Intersection sees traffic headed east-west and is also close to  
downtown Chatham which features shops, restaurants & hotels**



**Route 28 ADT is ~13,000 cars per day  
ADT at the Rotary is 13,000 cars per day**

# PROPERTY PHOTOS



# AREA PHOTOS



# AERIAL & DEMOGRAPHICS



## POPULATION

2 Mile: 4,027  
 5 Mile: 13,293  
 20 Min Drive: 23,563



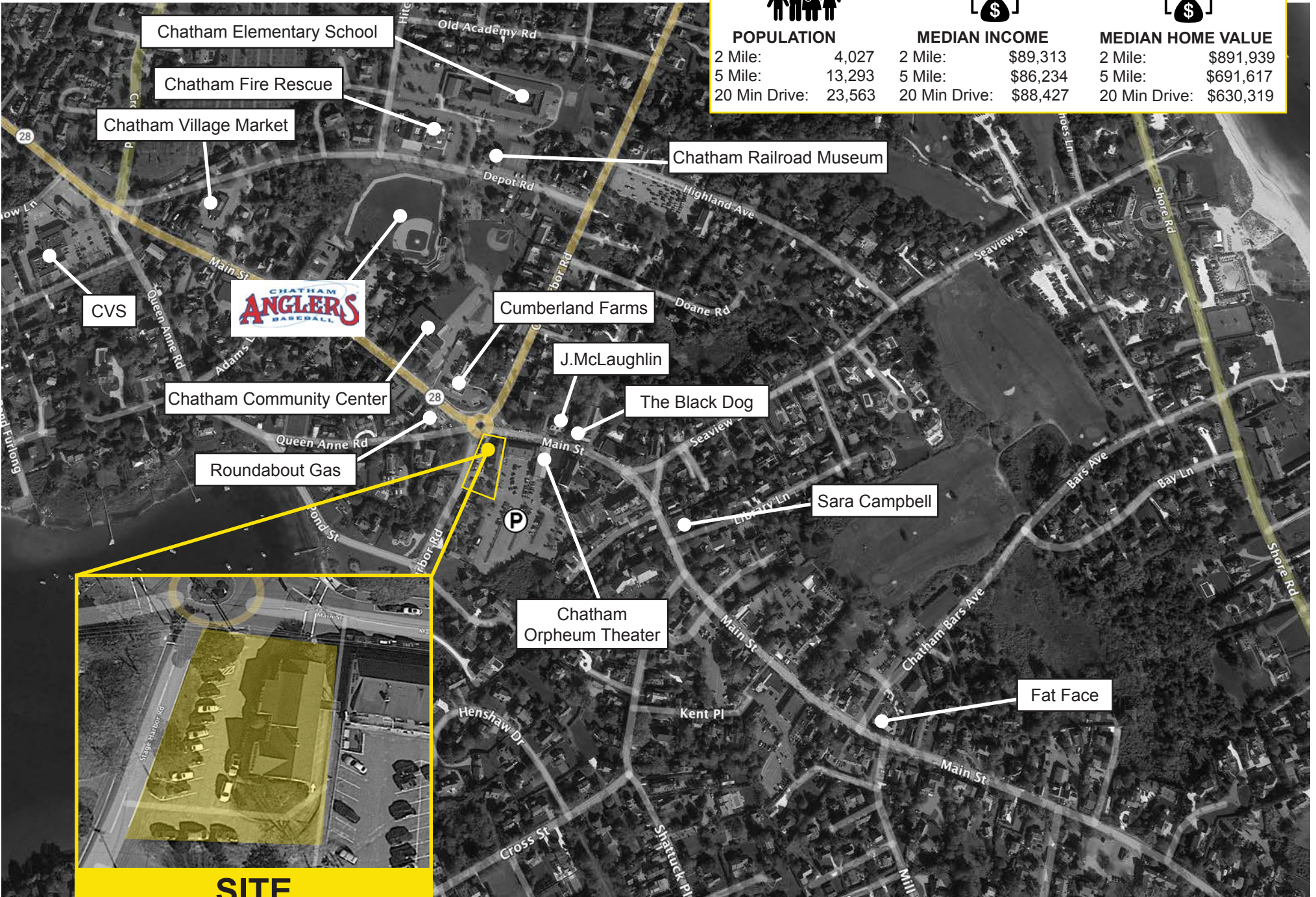
## MEDIAN INCOME

2 Mile: \$89,313  
 5 Mile: \$86,234  
 20 Min Drive: \$88,427



## MEDIAN HOME VALUE

2 Mile: \$891,939  
 5 Mile: \$691,617  
 20 Min Drive: \$630,319



**SITE**

BUILDING FOR LEASE - FORMER BANK BRANCH • 655 MAIN STREET • CHATHAM, MA



# Find Your Place.

OWNED BY:

REALTY  INCOME

LEASING BY:

**JIM CONVISER**  
**JIM@CONVISERPG.COM**  
**MOBILE: (617) 839-0456**



**ADAM CONVISER**  
**ADAM@CONVISERPG.COM**  
**MOBILE: (617) 593-1700**



**CONVISER PROPERTY GROUP, INC**  
**220 RESERVOIR STREET, SUITE 9 • NEEDHAM, MA 02494**  
**O: (781) 320-0600 • F: (781) 791-4599 • WWW.CONVISERPG.COM**

BUILDING FOR LEASE - FORMER BANK BRANCH • 655 MAIN STREET • CHATHAM, MA



Ver: 2.26.23