

1394 WALDEN ROAD

WALNUT CREEK, CA

16,117 SF land / 0.37 Acre Lot

Conditionally approved for 8
Townhouses

ASKING: \$1,350,000



John Sechser
Managing Director
East Bay Retail Services

925-296-3368

john.sechser@tricommercial.com

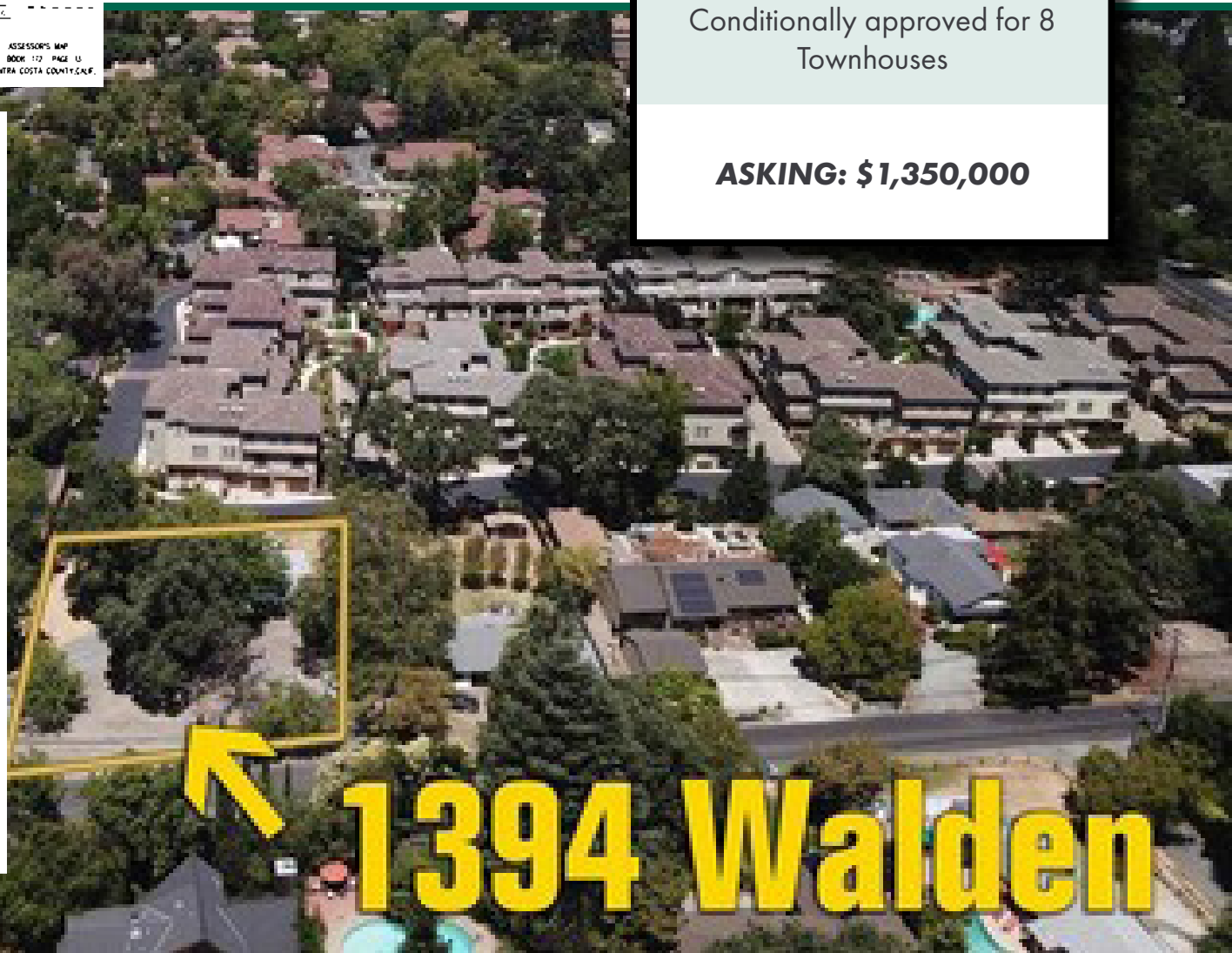
LIC: #00829597

Celine Mui Simon, Esq. CCIM
Associate

925-296-3305

celine.simon@tricommercial.com

LIC: #02130471

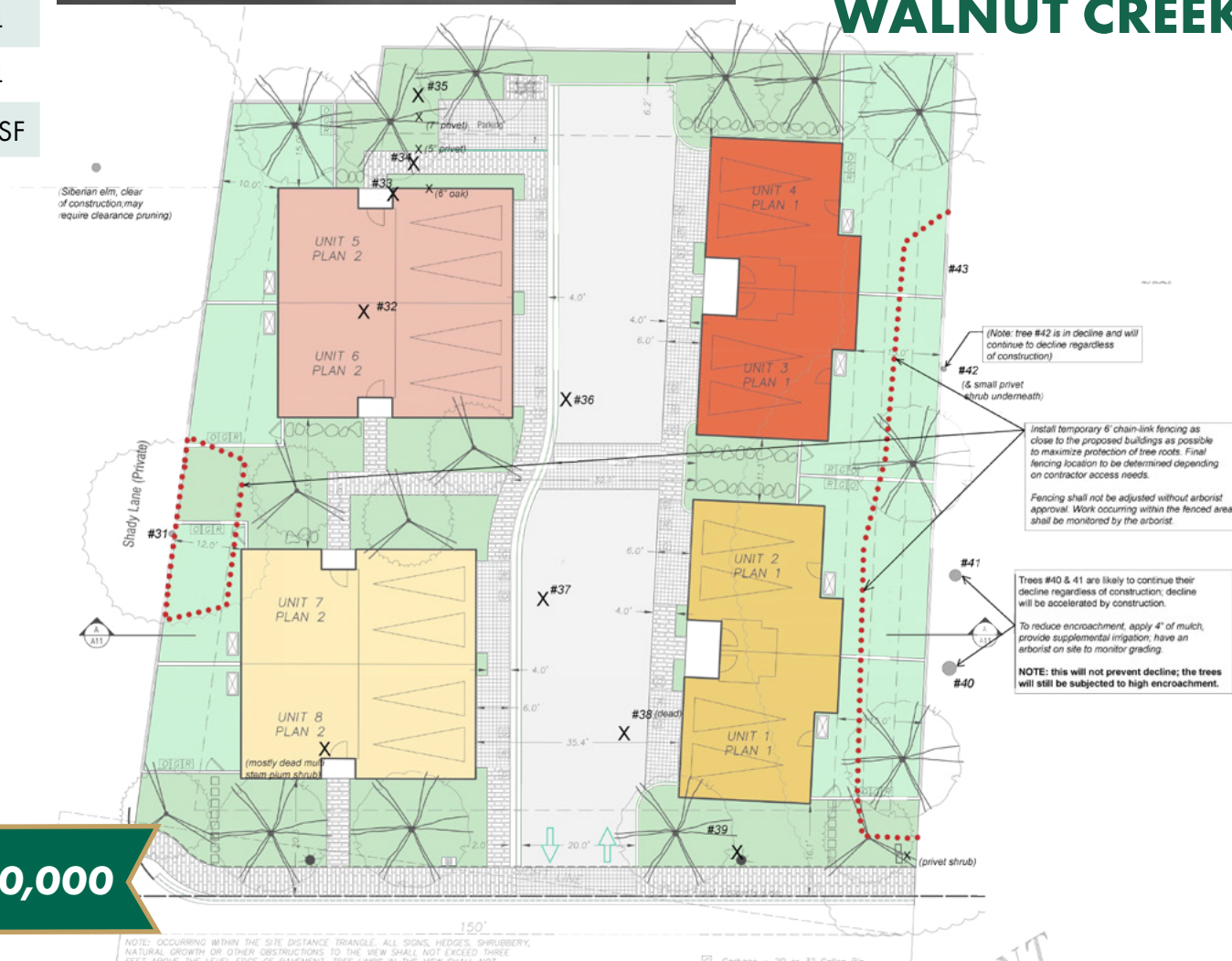


1394 Walden

Unit Mix	RSF
Unit 1 (2br/2.5ba)	±1,192
Unit 2 (2br/2.5ba)	±1,192
Unit 3 (2br/2.5ba)	±1,192
Unit 4 (2br/2.5ba)	±1,192
Unit 5 (3br/3.5ba)	±1,564
Unit 6 (3br/3.5ba)	±1,564
Unit 7 (3br/3.5ba)	±1,564
Unit 8 (3br/3.5ba)	±1,564
TOTAL:	±11,024 SF



1394 WALDEN ROAD WALNUT CREEK, CA



ASKING PRICE: \$1,350,000

1394 WALDEN ROAD

WALNUT CREEK, CALIFORNIA

CONDITIONALLY APPROVED FOR
8 TOWNHOUSES



John Sechser

925.296.3368

john.sechser@tricommercial.com

LIC: #00829597

Celine Mui Simon, Esq. CCIM

925-296-3305

celine.simon@tricommercial.com

LIC: #02130471



www.tricommercial.com

1394 WALDEN ROAD

WALNUT CREEK, CALIFORNIA

CONDITIONALLY APPROVED FOR
8 TOWNHOUSES



John Sechser

925.296.3368

john.sechser@tricommercial.com

LIC: #00829597

Celine Mui Simon, Esq. CCIM

925-296-3305

celine.simon@tricommercial.com

LIC: #02130471

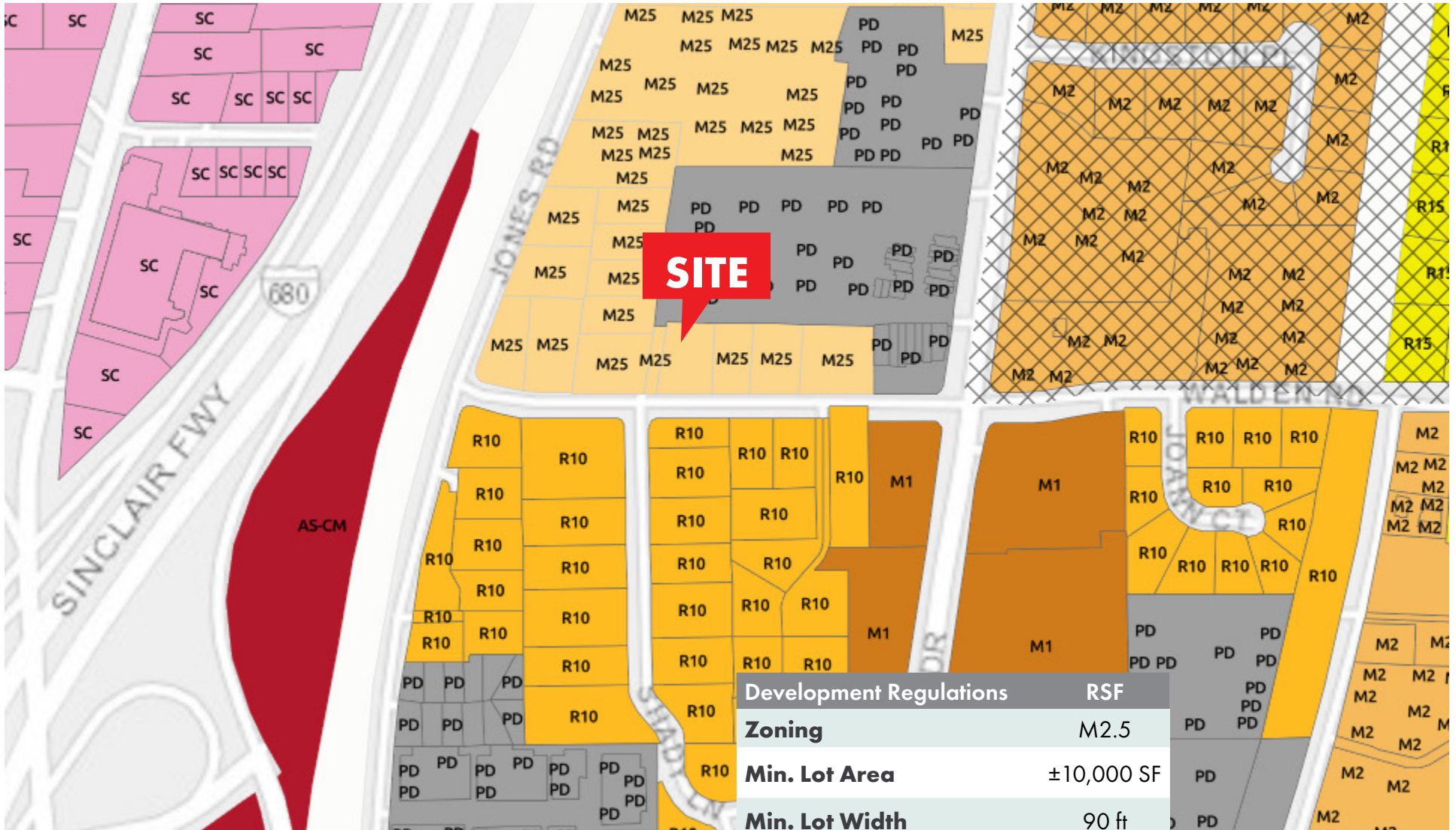


www.tricommercial.com

1394 WALDEN ROAD

WALNUT CREEK, CALIFORNIA

CONDITIONALLY APPROVED FOR
8 TOWNHOUSES



John Sechser

925.296.3368

john.sechser@tricommercial.com

LIC: #00829597

Celine Mui Simon, Esq. CCIM

925-296-3305

celine.simon@tricommercial.com

LIC: #02130471



www.tricommercial.com